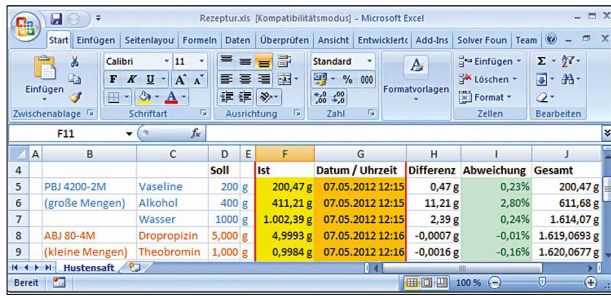
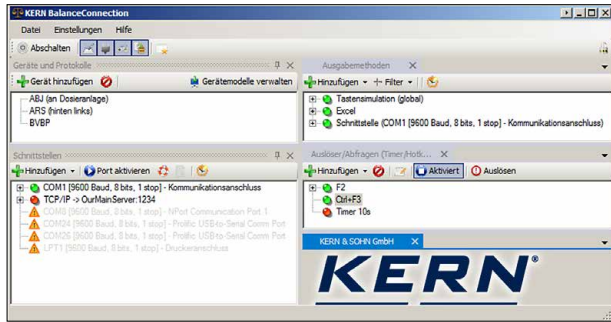


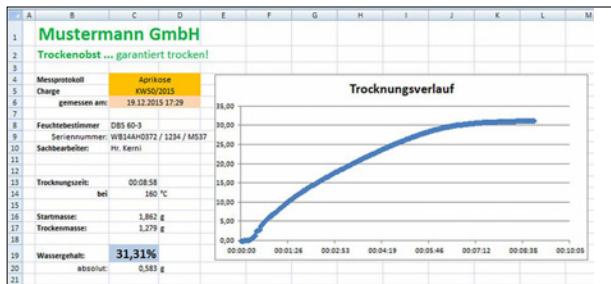
# KERN Software BalanceConnection SCD-4.0



Easy transfer and editing of measuring results e.g. in Microsoft® Excel



Full overview of devices, outputs, queries, interfaces, etc. shown on the output window immediately.



Measurement report with line chart showing a moisture analysis

## Flexible recording or transfer of measurements, particularly to Microsoft® Excel or Access

### Features

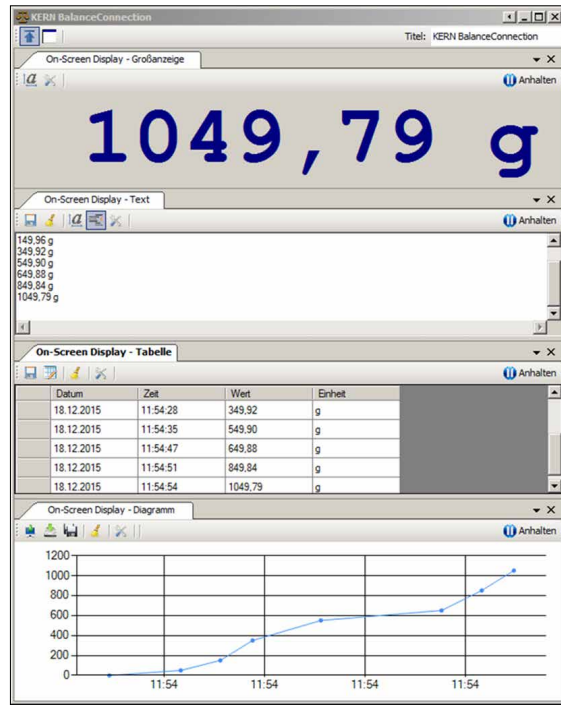
- For operating systems Windows XP, Vista, 7, 8, 8.1, 10, 11
- Supports balances measuring devices with RS 232, RS 485, Bluetooth, LAN or WiFi network (TCP/UDP/IP)
- Highly flexible formatting of the output (any order, formatting and rounding), particularly recording of date and time for every value transferred, if required
- Any number of devices/interfaces can be connected, as well as simultaneous and synchronised recording of several balances
- Key-activated or time-controlled interrogation of measurements or trigger of device functions, also for continuous recording
- The interface protocols for KERN balances are already predefined (standard configuration)
- Compatible interface cable included when you order a KERN balance at the same time

### Many different transfer and recording options:

- Microsoft® Excel/Access/Word in the foreground or background
- Other Windows applications (through key simulation), e.g. shipping software or ERP system (SAP, Sage, etc.)
- File recording (e.g. as text or CSV file)
- Print out on text or label printer
- Screen output such as large display, line chart (drying curve for moisture analyser), histogram, etc.

### Benefits

- Typing errors during e.g. manual transfer are avoided
- Automatic recording, e.g. for long-term tests
- Supports GLP-compliant processes
- Can be used across different branches and applications
- Also available as a cost-optimised package with 5 licenses, **you save more than 30%!**
- Also available immediately as a download license
- Scope of supplies: 1 CD, 1 license, KERN SCD-4.0, **€ 210,-**
- Scope of supplies: 1 CD, 5 licenses, KERN SCD-4.0S05, **€ 960,-**
- Scope of supplies: Download link for 1 license, KERN SCD-4.0-DL, **€ 210,-**



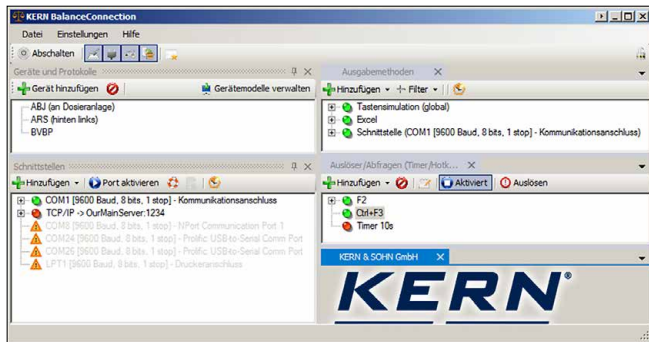
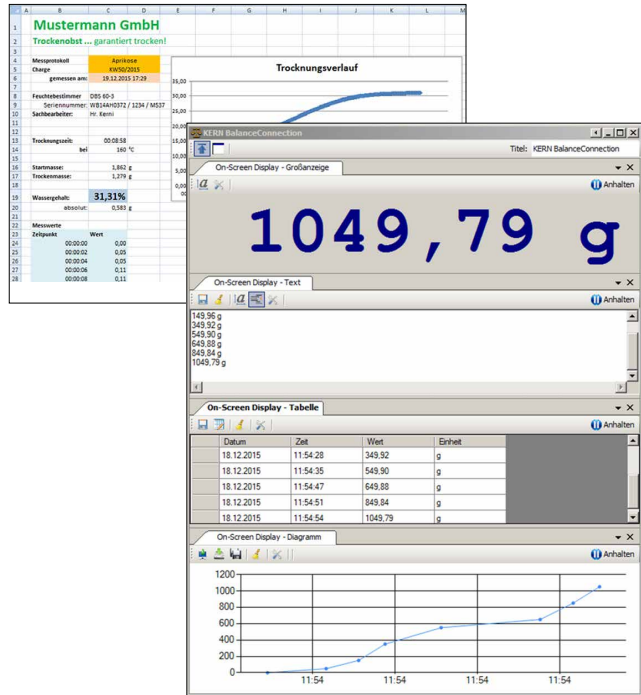
Different on-screen displays with export function

## Tip

Do you have any questions? The team from our Industry 4.0 centre of expertise will be happy to help: e-mail: [ITsupport@kern-sohn.com](mailto:ITsupport@kern-sohn.com) Or download a free demo version of the BalanceConnection software: <http://balanceconnection.kern-sohn.com/demo>

# KERN Software BalanceConnection SCD-4.0 Pro

	Soll	Ist	Datum / Uhrzeit	Differenz	Abweichung	Gesamt	
PBJ 4200-2M	Vaseline	200 g	200,47 g	07.05.2012 12:15	0,47 g	0,23%	200,47 g
(große Mengen)	Alkohol	400 g	411,21 g	07.05.2012 12:15	11,21 g	2,80%	611,68 g
	Wasser	1000 g	1.002,39 g	07.05.2012 12:15	2,39 g	0,24%	1.614,07 g
ABJ 80-4M	Drogpropizin	5,000 g	4,9993 g	07.05.2012 12:16	-0,0007 g	-0,01%	1.619,0693 g
(kleine Mengen)	Theobromin	1,000 g	0,9984 g	07.05.2012 12:16	-0,0016 g	-0,16%	1.620,0677 g



## Professional and highly flexible recording or transmission of measured values, in particular also to Microsoft® Excel or Access

### Features

- For operating systems Windows XP, Vista, 7, 8, 8.1, 10, 11
- Supports balances measuring devices with RS 232, RS 485, Bluetooth, LAN or WiFi network (TCP/UDP/IP)
- Highly flexible formatting of the output (any order, formatting and rounding), particularly recording of date and time for every value transferred, if required
- Any number of devices/interfaces can be connected, as well as simultaneous and synchronised recording of several balances
- Key-activated or time-controlled interrogation of measurements or trigger of device functions, also for continuous recording
- The interface protocols for KERN balances are already predefined (standard configuration)
- Compatible interface cable included when you order a KERN balance at the same time
- Many different transfer and recording options:
  - Microsoft® Excel/Access/Word in the foreground or background
  - Other Windows applications (through key simulation), e.g. shipping software or ERP system (SAP, Sage, etc.)
  - File recording (e.g. as text or CSV file)
  - Print out on text or label printer
  - Screen output such as large display, line chart (drying curve for moisture analyser), histogram, etc.

### Additional features of the

#### BalanceConnection PRO version:

- ODBC/SQL databases such as SQL Server or MySQL
- Transfer to HTTP Webservices/Web forms
- Histogram
- Enables the connection of medical balances to practice EDP systems using the device data transfer protocol (GDT) and also the HL7 protocol
- Implementation of programs/scripts using freely-definable command lines
- Command sequences
- Defining the conditions for specific events and the reaction to these events
- Filter for stability recognition (configurable value storage)
- Central configuration repository, e.g. on the network
- On-screen displays with configurable user interface for flexible balance operation

### Benefits

- Ideal software where weighing data which has been collected needs to be transferred to a Windows PC
- Particularly suitable for professional integration of weighing systems into existing networks where there is a high demand for automated data transfer and further processing, for integration of databases
- Automatic recording, e.g. for long-term tests
- Supports GLP-compliant processes
- Can be used across different branches and applications
- Any number of balances can be used on one PC/workstation per licence
- Also available as a cost-optimised package with 5 licenses, **you save more than 30 %!**
- Also available immediately as a download license
- Scope of supplies:
  - 1 CD, 1 License  
KERN SCD-4.0-PRO, € 380,-
  - 1 CD, 5 Licenses  
KERN SCD-4.0-PRO5, € 1460,-
  - Scope of supplies: Download link for  
1 License, KERN SCD-4.0-PRO-DL, € 380,-