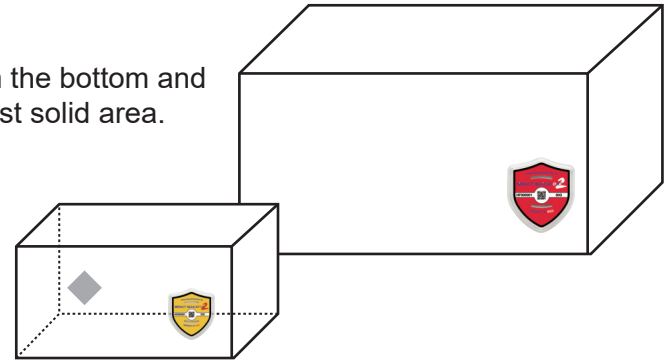




# ImpactIndicator2 - Mounting Instructions

- 1- Place the ImpactIndicator2 at a third of the height from the bottom and as close to a side/corner as possible, as that is the most solid area.
- 2- In case the length of a package is twice its width, it is recommended to use two ImpactIndicator2 units on opposite sides of the package.



With each ImpactIndicator2 you also receive a sheet with 3 adhesive labels on it:

## Warning Label

This label can be placed around the ImpactIndicator2 to get better visibility/attention.



## Alert Sticker

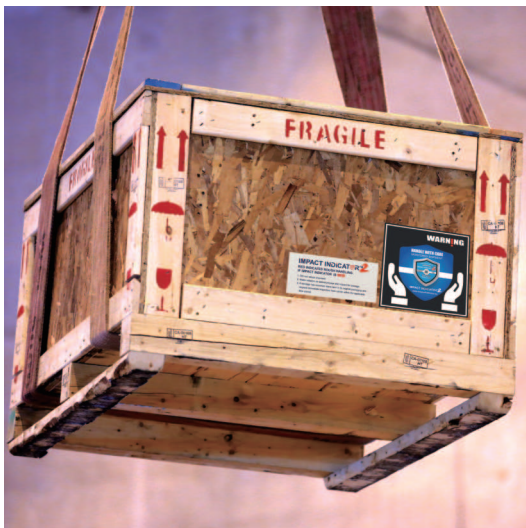
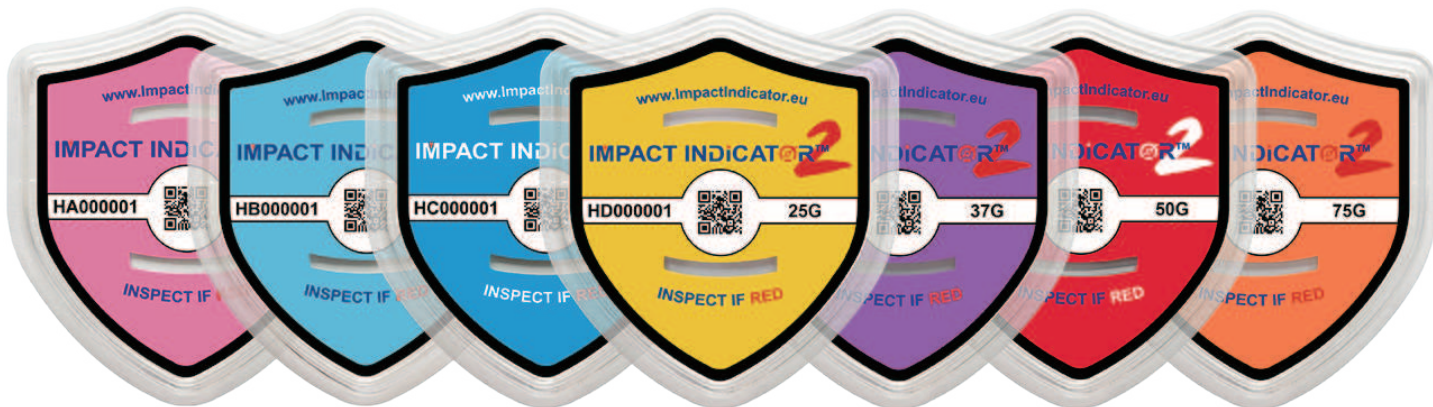
Stick that on the bill of lading to remind receivers to check the ImpactIndicator2, before signing for good receipt of the parcel.



## Instructions Label

Place this near the ImpactIndicator2, to give guidance to receivers how to handle in case the indicator has activated.





These are general instructions. If you believe your application is different and/or have questions about (how to use) the indicator, then please do not hesitate to contact your local dealer, or contact us direct: via email [info@logimon.solutions](mailto:info@logimon.solutions), or phone +31 (0)85 – 0066 082



For additional product information, please visit [www.ImpactIndicator.eu](http://www.ImpactIndicator.eu).

V2024-03.01