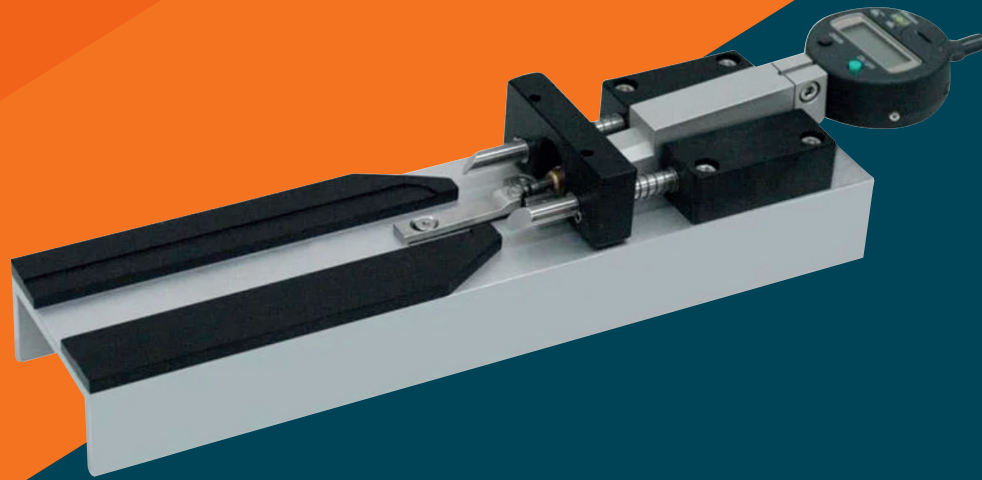


CMCKUHNKE



Seam Thickness Gauge

STG-4000 manual Seam Thickness Gauge

The manual Seam Thickness Gauge provides objective, repeatable and reliable measurements for beverage, food or aerosol cans. It measures the seam thickness on two or three points at the can seam. It is the first seam thickness gauge designed to closely duplicate hand micrometer readings up to a 603 diameter can (153mm).

Benefits

- The advantage of the seam thickness gauge is the operator independent application
- This special gauge encounters less false operation than a seam micrometer
- Measuring pressure and angle do not change
- Increased Accuracy
- Best R&R and DR results in the industry
- Completely operator independent measurement
- Saves Time: Automatic Data Transfer

Features

- For measurements of beverage cans the anvil height is 1.2 to 1.3mm; for 3-piece cans the height is 1.5 up to 1.6mm
- The height of the anvil will match averaged hand micrometer readings (refer attached protocol, Seam thickness comparison measurements with master cans)

Technical Details

Maximum Size:	603 (153mm)
Electrical Power Required:	SR44 Battery
Output Interface:	Mitutoyo Standard
Dimensions:	320mm x 80mm x 80mm (13in x 3in x 3in)
Resolution:	0.0001in (0.001mm)

Contact Details

web. www.industrialphysics.com

email. info@industrialphysics.com

email. info.china@industrialphysics.com