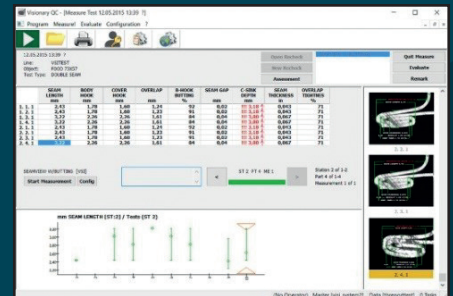


## SEAMscan SPC System

### SSW-2

The SEAMscan SPC System is an affordable, high-resolution tool for double seam inspection and measurement with SPC Reporting.



Visionary QC™ analysis



VSI model for Beverage cans

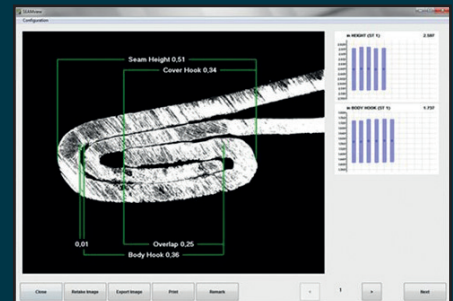


VSI model for Food cans



VSI model for Aerosol cans

**Measures:** Double Seam Inspection: Seam Thickness, Seam Height, Countersink Depth, Seam Gap, Body Hook, Cover Hook, Overlap



SEAMview Software

## Benefits

- **Saves time:**
  - Capture, measure and save seam images in less than 1 second!
  - Automatic transfer of data
  - Tailored inspections lead operators through process
- **Highly accurate:**
  - Better image quality and higher measurement resolution thanks to higher resolution camera
  - Eliminates operator bias
  - In-depth analysis for advanced statistical process control (SPC)
- **Customizable packages**
  - Tailor to your budget
  - Modular software to meet your needs
  - From stand-alone to fully-networked systems

## Technical Details

<b>Characteristics:</b>	Double Seam Inspection: Seam Thickness, Seam Height, Countersink Depth, Seam Gap, Body Hook, Cover Hook, Overlap
<b>Max Size:</b>	Video Seam Imagers available for Food Cans, Beverage Cans, Aerosol Cans of any height and diameter
<b>Electrical Required:</b>	100-240VAC 50-60Hz
<b>Output Interface:</b>	USB 3.0, USB 2.0, RS232
<b>Languages:</b>	English, German
<b>Resolution:</b>	±0.001mm (±0.00004in)
<b>Repeatability:</b>	±0.002mm (±0.00008in)
<b>Accuracy:</b>	±0.001mm (±0.00004in)

## Features

### The SEAMscan Package includes:

- **Video Seam Imager – VSI-6000 models for Food, Beverage, Aerosol, General Line or Oil Filters**
  - Clearly illuminates & captures images of seams
  - High-resolution USB camera (4.92 MPixel) & precision optics
  - Rugged and reliable
  - Integrated multiplexer for connecting up to 6 additional gauges
  - Better reliability and compatibility with modern hardware through USB 3.0
- **SEAMview Inspection Software**
  - Customize inspection screens
  - Zoom function
  - Compare to specifications with colored alerts
  - E-mail image files or use in a report document

### • Visionary SPC Software

- Easy-to-use Statistical Process Control for quick analysis of can inspection data
- Flexible, secure database
- Intuitive inspection reports may be shared and exported
- Track trends and statistics with SPC graphs

**Accessories available to provide complete double seam measurement:** Manual Seam Thickness Gauge, Manual Countersink Depth Gauge, Seam Stripper, Automatic Seam Saw

## Contact Details

**web.** [www.industrialphysics.com](http://www.industrialphysics.com)

**email.** [info@industrialphysics.com](mailto:info@industrialphysics.com)

**email.** [info.china@industrialphysics.com](mailto:info.china@industrialphysics.com)