

STYLI AND ACCESSORIES FOR COORDINATE MEASURING MACHINES





STYLI AND ACCESSORIES

EXCELLENT PRODUCTS FOR OUTSTANDING MEASUREMENT RESULTS

To give production more leeway in to utilise tolerances, it is essential that manufacturing measurement technology and quality assurance systems use methods with the lowest possible measurement uncertainty. Measurement uncertainty is often determined by the smallest components in the measuring system, such as the stylus configuration. Selecting suitable components to create the stylus configuration is essential to ensure absolute reliability and precision. To meet maximum precision and quality requirements, Hexagon Manufacturing Intelligence probing system components are manufactured to the highest standards. Thanks to the different types, materials, sizes and connectors, Hexagon probing system components can be used with any kind of probe head and sensors used on coordinate measuring machines (CMMs), 3D laser trackers, portable measuring arms and probes for machine tools.

Every application is different, which is why Hexagon offers a wide range of different types of stylus components and accessories. From extensions to adapters, from rotary to swivel joints, Hexagon offers the most suitable accessories for even the most challenging applications.

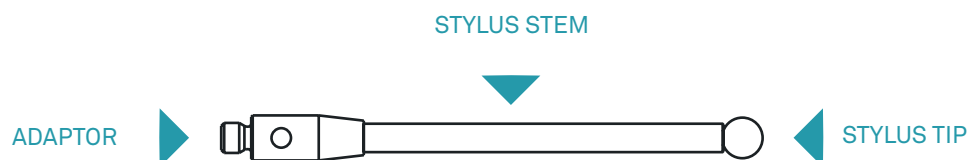
WHAT IS A STYLUS?

As important part of the measuring system, the stylus is in direct contact with the part during measurement. The influence on the accuracy of the results should not be underestimated .

This is why the stylus is subject to the highest quality levels in terms of stiffness and temperature stability, depending on the measuring task. The stylus contacts the part and the sensor generates a measuring signal which is used to determine the geometric position of the feature in X, Y and Z coordinates. The feature information is transferred to metrology software for further processing.

Touch trigger probes, used on both CMMs and machine tools, capture single points. Scanning sensors continuously capture points as long as the stylus is in contact with the part while the CMM is moving.

Styli are generally made up of a stylus tip, a stylus stem and a stylus adaptor.



STYLI TYPES

FIND THE PERFECT STYLUS FOR EACH APPLICATION

STRAIGHT STYLI

Straight Styli are the most common type used in the metrology industry, due to their flexibility. Depending on the application, different materials for spheres and stems are available.



DISC STYLI

This type of stylus is made of a section of a sphere and is often used to measure recesses and grooves.



STAR STYLI

A star configuration is made of multiple styli for maximum flexibility. It can also be used to significantly reduce the number of tool changes during the measurement cycle. Any number of styli can be combined to create a star configuration. Such configurations are typically used to measure rotational symmetrical toothed parts such as gears.



CYLINDRICAL STYLI

Cylindrical styli have, compared to other styli, a larger surface area and are used to capture thin walled parts reliably.



HOLLOW BALL STYLI

This type of stylus is used for measuring deep holes and rough surfaces. By hollowing out the sphere, weight is reduced compared to a solid sphere.



THE STYLUS TIP

HEART OF THE TOOL

The sphere is attached to the stem and is the functional feature of the configuration. Regardless of the application, even the smallest change of the stylus shape can have a significant impact on the measurement result and therefore a direct influence on process control. Styli predominantly have a ball. But disk, cylinder and hemispherical styli are also used, depending on the application.

The quality and suitability of the stylus are generally determined by two criteria. Firstly, the shape deviation must be kept to a minimum in order to achieve consistently precise results in all directions. Secondly, the stylus material should be selected to suit the

materials and surface properties in order to avoid surface degradation and ensure long life.

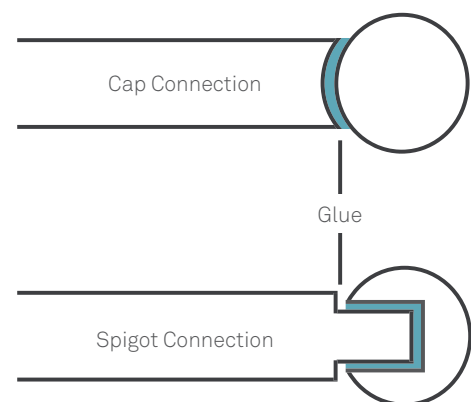
The quality of the spheres is defined by their maximum permissible form deviation.

Selecting a suitable stylus according to the application and workpiece material is strongly advised. The following stylus materials are available and can be selected according to the material and the surface properties of the part.

There are two ways to join the stylus tip and its shaft. The tip can either be glued into a spherical calotte on the end of the shaft, or a pin on the stem locates a hole in the stylus tip and is glued in.



Grade	Ø Form Deviation	Roundness
20	± 0.50 µm	0.50 µm
16	± 0.40 µm	0.40 µm
10	± 0.25 µm	0.25 µm
5	± 0.13 µm	0.13 µm
3	± 0.08 µm	0.08 µm

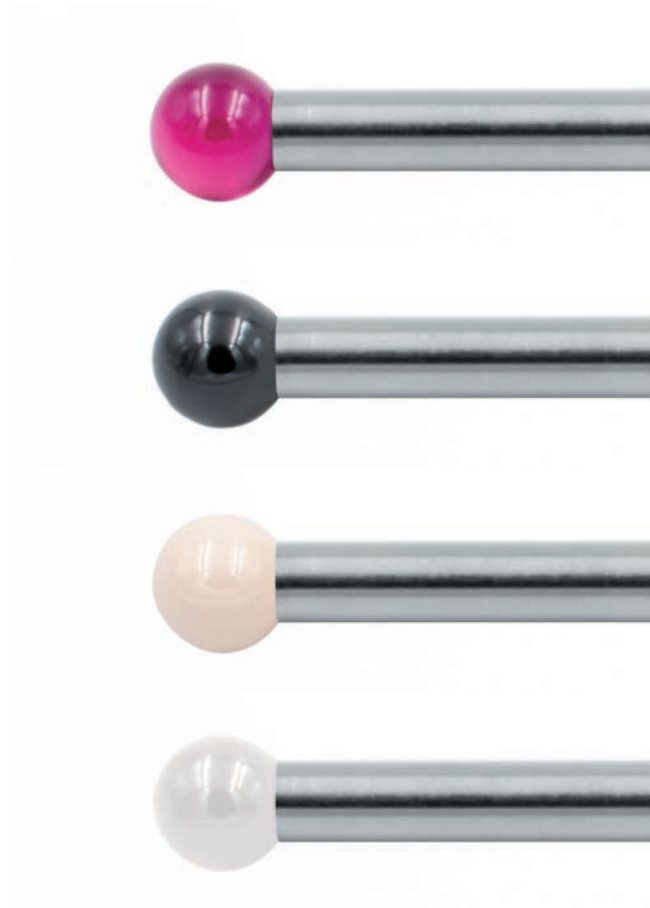


Ruby is the most widely used material for styli spheres due to its inexpensive availability, price and quality. It is the standard choice for most applications and is an extremely hard material, which tends, however, to cause material build-up when combined with certain materials such as aluminium.

Silicon nitride has similar properties to ruby in terms of the interaction between the stylus and the part surface, but it does not tend to form material build-up when measuring aluminium parts. Silicon nitride styli are more wear-resistant than ruby styli.

Ceramic is primarily used for long or heavy styli and disc styli. Due to its resistance to wear, ceramic styli are often used for scanning extremely rough surfaces, such as cast iron.

Diamond is the hardest material available and is perfect for scanning aluminium parts, as it does not create material build-up. Diamond styli are either solid or coated and have maximum wear resistance.



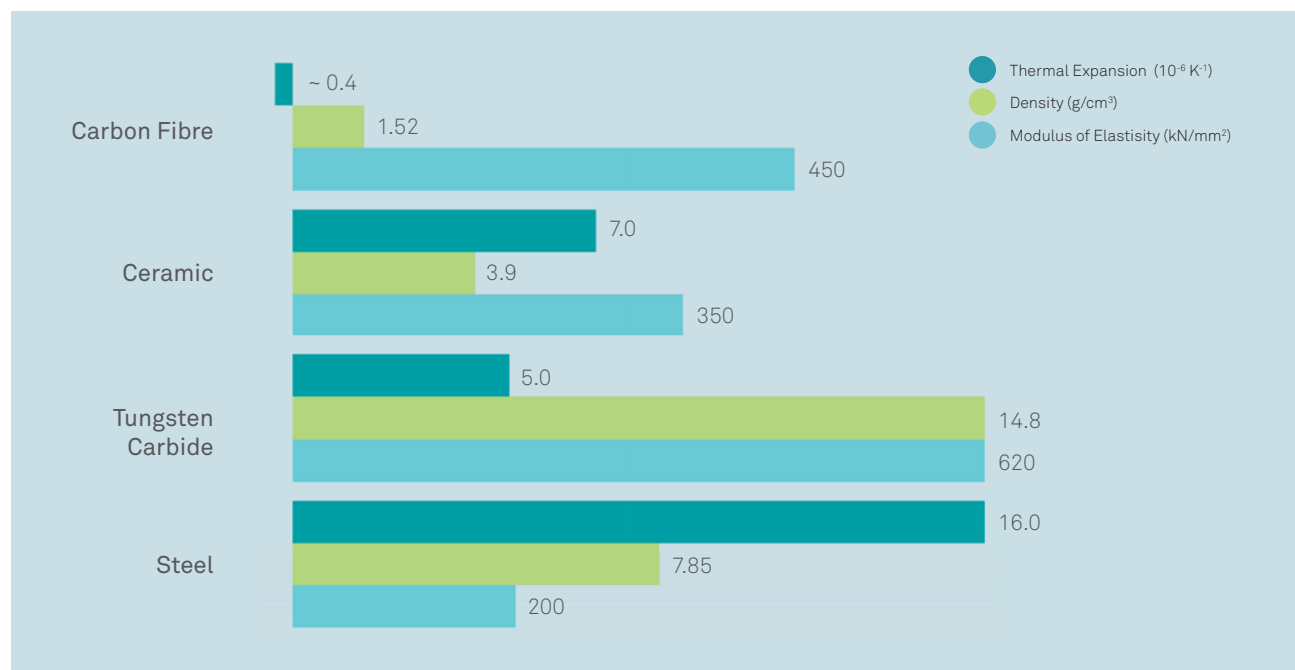
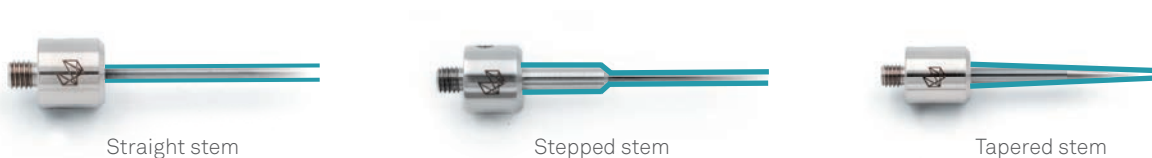
THE STYLUS SHAFT

CONNECTING THE TIP TO THE ADAPTOR

The shaft is the physical link between the stylus and its adaptor. Its job is to transfer the moment generated by the stylus contacting the part without loss. The physical and geometrical properties of the shaft are important.

The geometric properties, such as length and diameter, determine whether a feature can be

accessed by the stylus or not. Different types of shafts are available, among others, straight, tapered and stepped shafts. The shaft geometry plays a key role in avoiding “shanking” on the part, in particular with small spheres. The most important physical properties of the shaft are weight, stiffness and temperature behaviour.



THE STYLUS ADAPTOR CONNECTOR TO THE SENSOR

This is the interface between the stylus stem and the sensor. The stylus adaptor is usually made of either titanium, hard metal or stainless steel. The adaptor and the stylus shaft are either glued, welded or shrunk on. The adaptor utilises a connecting thread, M3 and M5 threads are generally used for measuring or scanning sensors, and M2 and M3 threads are used for touch trigger sensors. Thread adapters or extra stylus holders can be used to combine different threads or use styli with plain shafts.

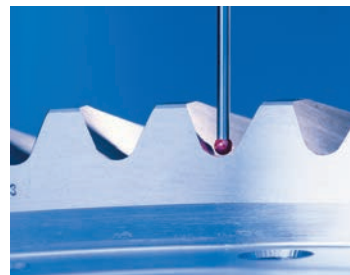
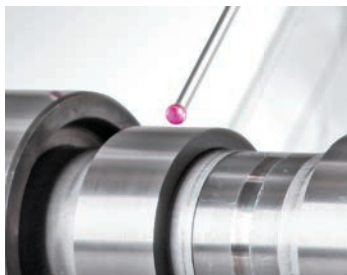
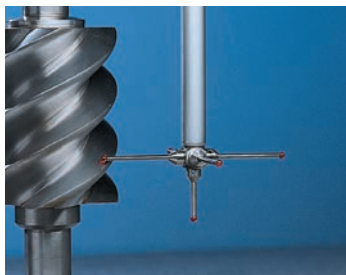
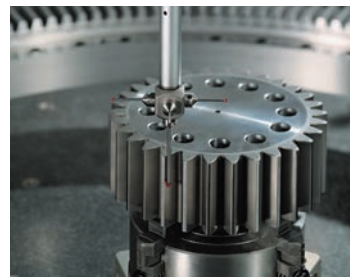
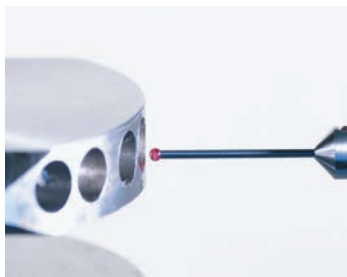
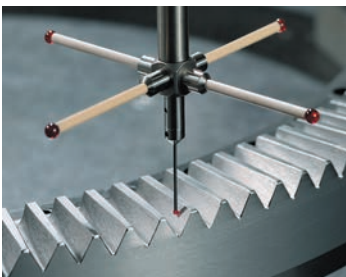


STYLI ACCESSORIES

A COMPLETE RANGE FOR ALL APPLICATIONS

The Hexagon range of styli and accessories provides the user with flexible and individual probing configurations to measure complex geometries and difficult to reach characteristics. Besides styli, accessories also include cubes, extensions, swivels, rotary joints, stylus holders and adapters. Using accessories, styli configurations can be created and customised to suit the measuring task, part and application.

- Cubes can be used to create application-specific configurations simply and easily. Up to five styli can be mounted on one cube.
- With rotary joints and swivel elements, styli can be orientated to ensure an optimal probing direction.
- Stylus holders are the link between sensor and stylus. They are available in different variations with defined angular orientations in order to minimise the number of time-intensive stylus changes.
- Adapters can be used to adapt the stylus to other threads or accessories
- Extensions are used to reach features that the stylus cannot access. As is the case when selecting a stylus, it is crucial to select a material, whose properties are similar to those of the stylus shafts.



IMPORTANT TIPS FOR BEST RESULTS

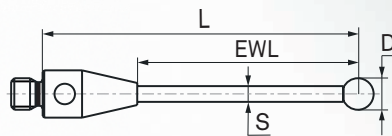
- When putting together the stylus configuration, it is vital to observe the permissible total weight for the sensor. This can vary considerably between different sensors.
- Styli configurations should be kept as short as possible. This minimises flexing, which in turn reduces variation in results.
- Styli configurations should be kept as short as possible. This minimises flexing, which in turn reduces variation in results.
- The more joints, the more flexible the stylus configuration. The number of components should be kept to a minimum to ensure maximum stiffness.
- Always ensure that the components in the configuration are properly assembled.
- For large temperature gradients, materials should be used that are temperature-stable. For long extensions, we only recommend carbon fibre components.
- Worn or mechanically deformed or damaged styli should be replaced immediately, in order to prevent measurement errors.
- Regularly check the contact surface of the individual accessories for damage in order to ensure maximum engagement between components.
- Spheres should be cleaned frequently, in order to ensure repeatable and accurate measurements.
- For many applications, it makes sense to align the styli using the part feature to be measured. If it is not possible, configurations can be set up using either hand tools or a stylus presetter.
- Don't forget: When chasing microns, the smallest details make the biggest difference.

ABBREVIATIONS

MEANING IN DESCRIPTION AND DRAWINGS

Material

AL	Aluminium
CE	Ceramic
CF	Carbon Fibre
DA	Dispal®
DC	Diamond Coated
DS	Diamond Sphere
R	Ruby
SN	Silicon Nitride
SS	Stainless Steel
ST	Steel
TC	Tungsten Carbide
TI	Titanium



Technical

L	Length [mm]
D	Diameter [mm]
D1	Extensions End Pieces Diameter [mm]
S	Stem Diameter [mm]
SP	Span [mm]
EWL	Effective Working Length [mm]
W	Weight [g]
QTY	Quantity

The illustrations are merely included as a visualization aid and are not true to scale.
Errors and modifications subject to change.



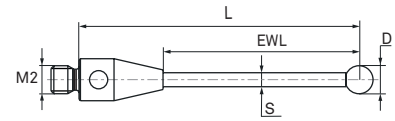
TOUCH TRIGGER

STYLI AND ACCESSORIES

M2 Styli and Accessories	Page
Styli	14
Stylus Extensions	19
Stylus Accessories	20
Stylus Kits	21
M3 Styli and Accessories	
Styli	26
Stylus Extensions	28
Stylus Accessories	29
Stylus Kits	30
M4 Styli and Accessories	
Styli	32
Stylus Extensions	32
Stylus Accessories	32
Tools	
Tools	33
Cross Reference Numbers	
Renishaw Hexagon	34

M2-STYLI WITH RUBY BALL

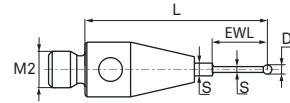
Stem: Tungsten Carbide or Stainless Steel



Part No.	Material	L	D	S	EWL	W
03969268	R / TC	10.00	0.3	0.2	2.00	0.3
03969267	R / TC	10.00	0.7	0.5	4.00	0.3
03969441	R / TC	10.00	1.0	0.8	4.80	0.3
03969269	R / TC	20.00	0.5	0.3	7.00	0.5
03969438	R / TC	20.00	0.7	0.5	14.80	0.3
03969271	R / TC	20.00	1.0	0.8	12.50	0.4
03969221	R / TC	20.00	1.0	0.7	7.00	0.5
03969272	R / TC	20.00	1.5	1.0	12.50	0.5
03969222	R / TC	20.00	2.0	1.0	15.00	0.4
03969439	R / TC	20.00	3.0	1.5	20.00	0.7
03969440	R / TC	20.00	4.0	2.0	20.00	1.1
03969430	R / TC	20.00	5.0	2.0	20.00	1.3
03969259	R / TC	27.00	1.0	0.7	20.50	0.4
03969261	R / TC	30.00	1.5	1.0	25.00	0.6
03969262	R / TC	30.00	2.0	1.5	25.00	0.9
03969263	R / TC	30.00	3.0	2.0	25.00	1.5
03969429	R / TC	30.00	4.0	2.0	30.00	1.5
03969282	R / TC	40.00	2.0	1.5	35.00	1.2
03969283	R / TC	40.00	3.0	2.0	35.00	1.9
03969284	R / TC	40.00	4.0	2.0	40.00	2.0
03969293	R / TC	50.00	3.0	2.0	42.50	2.4
03969294	R / TC	50.00	4.0	2.0	50.00	2.4
03969295	R / TC	50.00	5.0	2.5	50.00	3.8
03969201	R / SS	10.00	1.0	0.7	4.50	0.2
03969428	R / SS	10.00	1.5	0.7	5.70	0.2
03969202	R / SS	10.00	2.0	1.1	6.00	0.2
03969225	R / SS	10.00	2.5	1.0	6.00	0.3
03969203	R / SS	10.00	3.0	1.5	7.50	0.3
03969204	R / SS	10.00	4.0	1.65	10.00	0.4
03969205	R / SS	10.00	5.0	2.5	10.00	0.7
03969206	R / SS	10.00	6.0	2.7	10.00	0.8
03969208	R / SS	11.00	8.0	2.7	11.00	1.4
03969212	R / SS	20.00	2.0	1.3	14.00	0.4
03969226	R / SS	20.00	2.5	1.4	14.00	0.5
03969213	R / SS	20.00	3.0	1.5	17.50	0.5
03969214	R / SS	20.00	4.0	2.0	20.00	0.8

M2-STYLUS WITH RUBY BALL

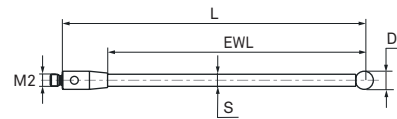
Stem: Tungsten Carbide (stepped)



Part No.	Material	L	D	S	EWL	W
03969220	R / TC	10.00	0.5	0.32 / 0.7	3.00	0.3

M2-STYLI WITH RUBY BALL

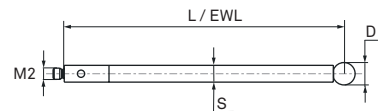
Stem: Ceramic



Part No.	Material	L	D	S	EWL	W
03969442	R / CE	30.00	4.0	2.0	30.00	0.7
03969223	R / CE	50.00	3.0	2.0	42.50	0.8
03969224	R / CE	50.00	4.0	2.0	50.00	0.9

M2-STYLI WITH RUBY BALL

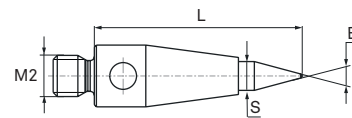
Stem: Carbon Fibre



Part No.	Material	L	D	S	EWL	W
03969286	R / CF	30.00	6.0	3.0	30.00	1.2
03969260	R / CF	50.00	4.0	3.0	50.00	0.8
03969425	R / CF	50.00	5.0	3.0	50.00	1.0
03969276	R / CF	50.00	6.0	3.0	50.00	1.4
03969424	R / CF	75.00	4.0	2.0	75.00	0.7

M2-POINTER STYLUS

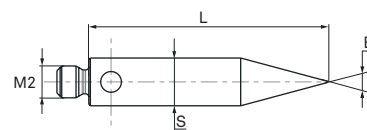
Stylus Tip: Tungsten Carbide



Part No.	Material	L	S	B	W
03969141	TC	10.00	1.4	30°	0.4

M2-POINTER STYLUS

Material: Stainless Steel

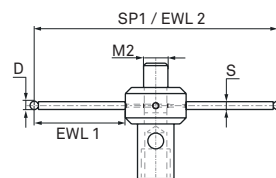


Part No.	Material	L	S	B	W
03969200	SS	15.00	3.0	30°	0.6

M2-STAR STYLI 4-WAY

Ball: Ruby

Stem: Tungsten Carbide

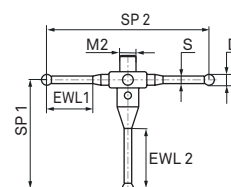


Part No.	Material	SP 1/2	D	S	EWL 1/2	W
03969210	R / TC	20.0 / -	0.5	0.3	7.50 / 20.00	0.7
03969422	R / TC	10.0 / -	0.5	0.3	2.50 / 10.00	0.6
03969423	R / TC	20.0 / -	1.0	0.7	7.50 / 20.00	0.8

M2-STAR STYLI 5-WAY

Ball: Ruby

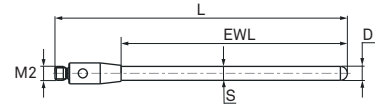
Stem: Stainless Steel



Part No.	Material	SP 1/2	D	S	EWL 1/2	W
03969081	R / SS	18.0 / 20.0	2.0	1.4	4.50 / 10.00	1.4
03969082	R / SS	18.0 / 30.0	2.0	1.4	9.00 / 10.00	1.7
03969055	R / SS	20.0 / 20.0	2.0	1.4	4.50 / 10.00	1.5
03969056	R / SS	20.0 / 30.0	2.0	1.4	9.00 / 10.00	1.7

M2-SPHERICAL CYLINDER STYLI

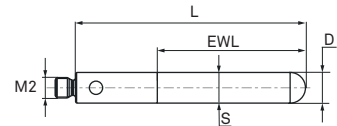
Stylus Tip: Tungsten Carbide



Part No.	Material	L	D	S	EWL	W
03969277	TC	15.30	0.5	0.5	7.80	0.3
03969279	TC	16.00	2.0	2.0	8.50	0.8
03969278	TC	35.50	1.0	1.0	29.80	0.6
03969280	TC	40.00	2.0	2.0	32.50	1.9

M2-SPHERICAL CYLINDER STYLUS

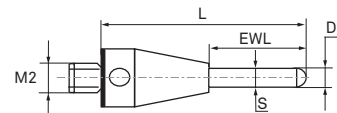
Stylus Tip: Tungsten Carbide



Part No.	Material	L	D	S	EWL	W
03969281	TC	22.50	3.0	3.0	14.50	2.0

M2-SPHERICAL CYLINDER STYLUS

Stylus Tip: Ruby

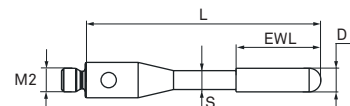


Part No.	Material	L	D	S	EWL	W
03969445	R / SS	15.00	1.0	1.0	6.50	0.3

M2-SPHERICAL CYLINDER STYLUS

Stylus Tip: Ruby

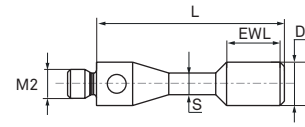
Stem: Tungsten Carbide



Part No.	Material	L	D	S	EWL	W
03969292	R / TC	20.00	2.0	1.6	7.20	0.6

M2-CYLINDER STYLI

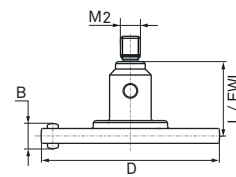
Material: Stainless Steel



Part No.	Material	L	D	S	EWL	W
03969251	SS	11.00	1.5	1.0	1.50	0.4
03969253	SS	13.00	3.0	1.5	3.70	0.5

M2-DISC STYLUS

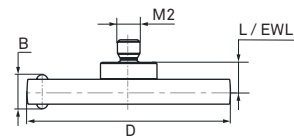
Disc: Silver Steel



Part No.	Material	L	D	B	EWL	W
03969242	SV / SS	7.50	18.0	2.5	7.50	2.9

M2-DISC STYLUS

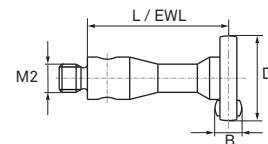
Disc: Ceramic



Part No.	Material	L	D	B	EWL	W
03969243	CE / SS	2.60	18.0	3.0	2.60	2.4

M2-DISC STYLUS

Disc: Ruby



Part No.	Material	L	D	B	EWL	W
03969241	R / SS	10.00	6.0	2.0	10.00	0.6

M2-HOLLOW BALL STYLUS

Hollow Ball: Ceramic



Part No.	Material	L	D	EWL	W
03969218	CE	11.00	18.0	11.00	3.7

M2-STYLUS EXTENSIONS

Material: Stainless Steel



Part No.	Material	L	D	D1	W
03969230	SS	5.00	3.0	-	0.2
03969231	SS	10.00	3.0	-	0.4
03969232	SS	20.00	3.0	-	0.9
03969233	SS	30.00	3.0	-	1.5
03969234	SS	40.00	3.0	-	2.1

M2-STYLUS EXTENSIONS

Stem: Carbon Fibre

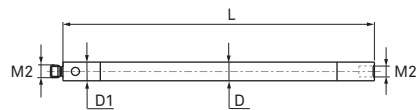
End Pieces: Stainless Steel



Part No.	Material	L	D	D1	W
03969270	CF / SS	40.00	3.0	3.5	1.0
03969238	CF / SS	50.00	3.0	3.5	1.2
03969239	CF / SS	70.00	3.0	3.5	1.4
03969240	CF / SS	90.00	3.0	3.5	1.6

M2-STYLUS EXTENSIONS

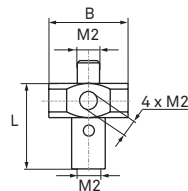
Stem: Ceramic
End Pieces: Stainless Steel



Part No.	Material	L	D	D1	W
03969246	CE / SS	40.00	3.0	3.0	1.2
03969247	CE / SS	50.00	3.0	3.0	1.5

M2-STYLUS HOLDER 5-WAY

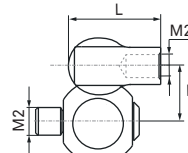
Material: Stainless Steel



Part No.	Material	L	D	B	W
03969054	SS	7.50	-	7.0	1.0

M2-STYLUS KNUCKLE

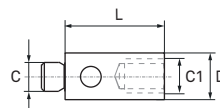
Material: Stainless Steel



Part No.	Material	L	D	B	W
03969059	SS	8.00	-	4.5	1.6

M2/M3-STYLUS ADAPTER

Material: Stainless Steel



Part No.	Material	L	D	C	C1	W
03969061	SS	7.00	4.0	M2	M3	0.4

M2-STYLUS KIT NO. 1



Part No.	Item Description	Contents	QTY
03969075	M2-Stylus Kit No. 1		
	M2-Stylus (R-3-SS-1.5-L10)	03969203	2
	M2-Stylus (R-4-SS-1.65-L10)	03969204	1
	M2-Stylus (R-6-SS-2.7-L10)	03969206	1
	M2-Stylus (R-2-SS-1.3-L20)	03969212	2
	M2-Stylus (R-3-SS-1.5-L20)	03969213	2
	M2-Stylus (R-4-SS-2-L20)	03969214	1
	M2-Stylus Extension (SS-3-L5)	03969230	2
	M2-Stylus Extension (SS-3-L10)	03969231	2
	M2-Stylus Extension (SS-3-L20)	03969232	2
	M2-Stylus Extension (SS-3-L30)	03969233	2
	M2-Cylinder Stylus (SS-3-SS-1.5-L13)	03969253	1
	M2-Star Stylus 5-way (R-2-SS-1.4-SP18/20)	03969081	1
	M2-Styli Holder 5-way (SS-L7.5)	03969054	1
	M2/M3-Mounting Pin	03969600	1
	Storage Box		1
	M2-Stylus (R-1-SS-0.7-L10)	03969201	1
	M2-Stylus (R-2-SS-1.1-L10)	03969202	1

M2-STYLUS KIT NO. 2



Part No.	Item Description	Contents	QTY
03969087	M2-Stylus Kit No. 2		
	M2-Stylus (R-1-SS-0.7-L10)	03969201	1
	M2-Stylus (R-2-SS-1.1-L10)	03969202	1
	M2-Stylus (R-3-SS-1.5-L10)	03969203	1
	M2-Stylus (R-4-SS-1.65-L10)	03969204	1
	M2-Stylus Extension (SS-3-L10)	03969231	1
	M2-Stylus Extension (SS-3-L20)	03969232	1
	M2-Stylus Extension (SS-3-L30)	03969233	1
	Plastic Box		1

M2-STYLUS KIT NO. 3



Part No.	Item Description	Contents	QTY
03969063	M2-Stylus Kit No. 3		
	M2-Stylus (R-1-SS-0.7-L10)	03969201	1
	M2-Stylus (R-2-SS-1.1-L10)	03969202	1
	M2-Stylus (R-3-SS-1.5-L10)	03969203	1
	M2-Stylus (R-2-SS-1.3-L20)	03969212	1
	M2-Stylus (R-3-SS-1.5-L20)	03969213	1
	M2-Stylus Extension (SS-3-L10)	03969231	2
	M2-Disc Stylus (R-6-SS-L10)	03969241	1
	M2-Disc Stylus (SV-18-SS-L7.5)	03969242	1
	M2-Stylus Knuckle (SS-L8)	03969059	1
	M2-Star Stylus 5-way (R-2-SS-1.4-SP18/30)	03969082	1
	M2/M3-Mounting Pin	03969600	2
	Hexagon Socket Wrench AF1.5 mm	03969703	1
	Storage Box		1

M2-STYLUS KIT NO. 7



Part No.	Item Description	Contents	QTY
03969076	M2-Stylus Kit No. 7		
	M2-Stylus (R-1-SS-0.7-L10)	03969201	2
	M2-Stylus (R-2-SS-1.1-L10)	03969202	6
	M2-Stylus (R-3-SS-1.5-L10)	03969203	2
	M2-Stylus (R-4-SS-1.65-L10)	03969204	2
	M2-Stylus (R-2-SS-1.3-L20)	03969212	2
	M2-Stylus (R-3-SS-1.5-L20)	03969213	1
	M2-Stylus (R-4-SS-2-L20)	03969214	1
	M2-Stylus (R-1-TC-0.7-L20)	03969221	1
	M2-Stylus Extension (SS-3-L10)	03969231	2
	M2-Stylus Extension (SS-3-L20)	03969232	1
	M2-Styli Holder 5-way (SS-L7.5)	03969054	1
	M2-Star Stylus 5-way (R-2-SS-1.4-SP18/30)	03969082	1
	M3/M2-Stylus Adapter (SS-L5)	03969062	1
	M2-Stylus Knuckle (SS-L8)	03969059	1
	M2/M3-Mounting Pin	03969600	2
	Hexagon Socket Wrench AF1.5 mm	03969703	1
	Storage Box		1

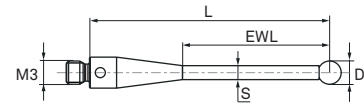
M2-STYLUS KIT NO. 8



Part No.	Item Description	Contents	QTY
03969086	M2-Stylus Kit No. 8		
	M2-Stylus (R-2-SS-1.1-L10)	03969202	1
	M2-Stylus (R-4-SS-1.65-L10)	03969204	1
	M2-Stylus (R-2-SS-1.3-L20)	03969212	2
	M2-Stylus (R-3-SS-1.5-L20)	03969213	2
	M2-Stylus (R-1-TC-0.7-L20)	03969221	1
	M2-Stylus (R-4-CF-3-L50)	03969260	1
	M2-Stylus Extension (SS-3-L10)	03969231	1
	M2-Stylus Extension (SS-3-L20)	03969232	1
	M2-Stylus Extension (CF-3-SS-3.5-L40)	03969270	1
	M2-Star Stylus 5-way (R-2-SS-1.4-SP18/30)	03969082	1
	M2-Styli Holder 5-way (SS-L7.5)	03969054	1
	M2/M3-Mounting Pin	03969600	2
	M2-Key for Carbon Fibre Extension	03969701	2
	HP-T/HP-TM Probe Tool Key		2
	Storage Box		1

M3-STYLI WITH RUBY BALL

Stem: Tungsten Carbide or Stainless Steel



Part No.	Material	L	D	S	EWL	W
03969431	R / TC	20.00	1.5	1.0	11.70	0.9
03969312	R / TC	21.00	2.0	1.0	15.00	0.7
03969332	R / TC	21.00	2.5	2.0	12.50	1.4
03969432	R / TC	30.00	1.5	1.0	21.70	1.0
03969322	R / TC	30.00	2.0	1.5	22.50	1.1
03969342	R / TC	30.00	2.5	2.0	22.50	1.8
03969313	R / TC	30.00	3.0	2.0	22.50	1.8
03969433	R / TC	40.00	2.0	1.0	33.90	1.1
03969343	R / TC	40.00	3.0	2.0	32.50	2.2
03969434	R / TC	40.00	4.0	2.0	40.00	2.4
03969353	R / TC	50.00	3.0	2.0	42.50	2.7
03969435	R / TC	50.00	4.0	2.0	50.00	2.8
03969436	R / TC	50.00	5.0	2.0	50.00	2.9
03969324	R / SS	10.00	3.0	1.5	6.00	0.5
03969327	R / SS	10.00	3.0	2.0	6.50	0.6
03969326	R / SS	10.00	6.0	2.7	10.00	1.1
03969301	R / SS	21.00	1.0	0.7	4.00	1.0
03969302	R / SS	21.00	2.0	1.4	8.00	1.0
03969303	R / SS	21.00	3.0	1.5	12.00	0.9
03969304	R / SS	21.00	4.0	2.5	17.00	1.3
03969305	R / SS	21.00	5.0	2.5	21.00	1.4
03969333	R / SS	31.00	3.0	1.8	22.00	1.3
03969334	R / SS	31.00	4.0	2.5	27.00	1.8

M3-STYLUS WITH RUBY BALL

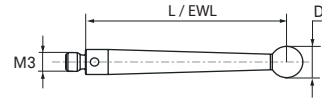
Stem: Tungsten Carbide (stepped)



Part No.	Material	L	D	S	EWL	W
03969310	R / TC	21.00	0.5	0.32 / 0.7	3.00	1.0

M3-STYLUS WITH RUBY BALL

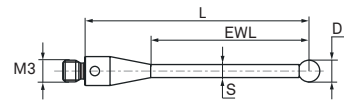
Stem: Stainless Steel (tapered)



Part No.	Material	L	D	S	EWL	W
03969335	R / SS	31.00	5.0	-	31.00	2.3

M3-STYLUS WITH RUBY BALL

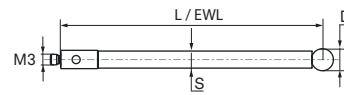
Stem: Ceramic



Part No.	Material	L	D	S	EWL	W
03969437	R / CE	50.00	3.0	1.5	45.30	1.0

M3-STYLUS WITH RUBY BALL

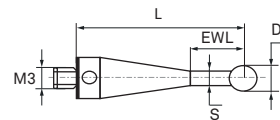
Stem: Carbon Fibre



Part No.	Material	L	D	S	EWL	W
03969443	R / CF	72.00	6.0	4.0	72.00	2.2
03969450	R / CF	75.00	6.0	4.0	75.00	2.3

M3-STYLI WITH SILICON NITRIDE BALL

Stem: Tungsten Carbide

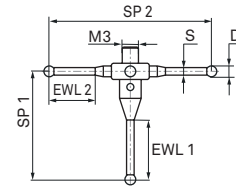


Part No.	Material	L	D	S	EWL	W
03969421	SN / TC	21.00	2.0	1.4	10.00	1.1
03969420	SN / TC	21.50	1.0	0.7	10.00	1.0

M3-STAR STYLI 5-WAY

Ball: Ruby

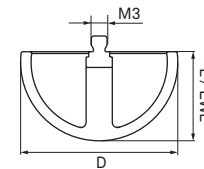
Stem: Stainless Steel



Part No.	Material	SP 1/2	D	S	EWL 1/2	W
03969083	R / SS	18.0 / 20.0	2.0	1.4	9.50 / 4.50	2.1
03969057	R / SS	20.0 / 20.0	2.0	1.4	11.00 / 4.50	2.1
03969084	R / SS	18.0 / 30.0	2.0	1.4	9.50 / 9.00	2.4
03969058	R / SS	20.0 / 30.0	2.0	1.4	11.00 / 9.00	2.4

M3-HOLLOW BALL STYLUS

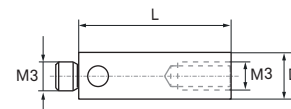
Hollow Ball: Ceramic



Part No.	Material	L	D	EWL	W
03969330	CE	17.00	30.0	17.00	12.9

M3-STYLUS EXTENSIONS

Material: Stainless Steel

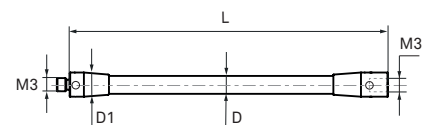


Part No.	Material	L	D	D1	W
03969044	SS	10.00	4.0	-	0.7
03969045	SS	20.00	4.0	-	1.8
03969320	SS	35.00	4.0	-	3.1

M3-STYLUS EXTENSIONS

Stem: Carbon Fibre

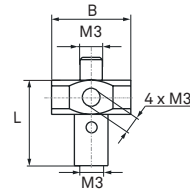
End Pieces: Dispal®



Part No.	Material	L	D	D1	W
03969446	CF / DA	75.00	4.0	5.5	2.1
03969447	CF / DA	100.00	4.0	5.5	2.6

M3-STYLUS HOLDER 5-WAY

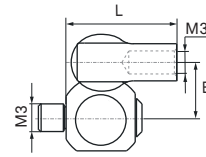
Material: Stainless Steel



Part No.	Material	L	D	B	W
03969046	SS	13.00	-	-	3.5

M3-STYLUS KNUCKLE

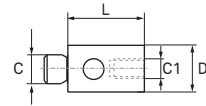
Material: Stainless Steel



Part No.	Material	L	D	B	W
03969060	SS	12.00	-	6.0	3.6

M3/M2-STYLUS ADAPTER

Material: Stainless Steel



Part No.	Material	L	D	C	C1	W
03969062	SS	5.00	4.0	M3	M2	0.5

M3-STYLUS KIT NO. 1



Part No.	Item Description	Contents	QTY
03969101	M3-Stylus Kit No. 1		
	M3-Stylus (R-2-SS-1.4-L21)	03969302	1
	M3-Stylus (R-3-SS-1.5-L21)	03969303	4
	M3-Stylus (R-4-SS-2.5-L21)	03969304	1
	M3-Stylus Extension (SS-4-L10)	03969044	2
	M3-Stylus Extension (SS-4-L20)	03969045	1
	M3-Styli Holder 5-way (SS-L13)	03969046	1
	Plastic Box		1

M3-STYLUS KIT NO. 2



Part No.	Item Description	Contents	QTY
03969040	M3-Stylus Kit No. 2		
	M3-Stylus (R-2-SS-1.4-L21)	03969302	1
	M3-Stylus (R-3-SS-1.5-L21)	03969303	1
	M3-Stylus (R-4-SS-2.5-L21)	03969304	1
	M3-Stylus Extension (SS-4-L10)	03969044	1
	M3-Stylus Extension (SS-4-L20)	03969045	1
	M3-Styli Holder 5-way (SS-L13)	03969046	1
	M2/M3-Mounting Pin	03969600	1
	D9.5-Stylus (SS-6.35-SS-5-L71)		1
	Plastic Box		1

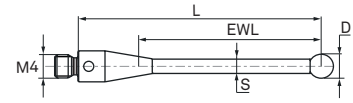
M3-STYLUS KIT NO. 3



Part No.	Item Description	Contents	QTY
03969102	M3-Stylus Kit No. 3		
	M3-Stylus (R-2-SS-1.4-L21)	03969302	1
	M3-Stylus (R-3-SS-1.5-L21)	03969303	1
	M3-Stylus (R-4-SS-2.5-L21)	03969304	1
	M3-Stylus Extension (SS-4-L10)	03969044	1
	M3-Stylus Extension (SS-4-L20)	03969045	1
	M3-Styli Holder 5-way (SS-L13)	03969046	1
	Plastic Box		1

M4-STYLI WITH RUBY BALL

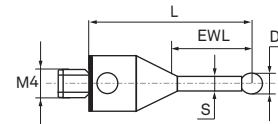
Stem: Ceramic



Part No.	Material	L	D	S	EWL	W
03969426	R / CE	50.00	6.0	4.5	44.29	5.7
03969408	R / CE	50.00	8.0	4.5	50.00	5.4
03969427	R / CE	100.00	6.0	4.5	94.29	8.8
03969418	R / CE	100.00	8.0	4.5	100.00	9.0

M4-STYLUS WITH RUBY BALL

Stem: Stainless Steel

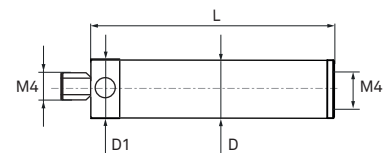


Part No.	Material	L	D	S	EWL	W
03969402	R / SS	19.00	2.0	1.4	8.00	2.3

M4-STYLUS EXTENSION

Stem: Ceramic

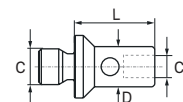
End Pieces: Stainless Steel



Part No.	Material	L	D	D1	W
03969401	CE / SS	30.00	7.0	7.5	5.1

M4/M3-STYLUS ADAPTER

Material: Stainless Steel



Part No.	Material	L	D	C	C1	W
03969403	SS	9.00	4.5	M4	M3	1.3



Part No.	Item Description
03969600	M2/M3-Mounting Pin



Part No.	Item Description
03969703	Hexagon Socket Wrench AF1.5 mm



Part No.	Item Description
03969701	M2-Key for Carbon Fibre Extension

CROSS REFERENCE NUMBERS

TOUCH TRIGGER STYLI AND ACCESSORIES

Renishaw Part No.	Hexagon Part No.	Item Description
A-5000-3551	03969301	M3-Stylus (R-1-SS-0.7-L21)
A-5000-3552	03969302	M3-Stylus (R-2-SS-1.4-L21)
A-5000-3553	03969303	M3-Stylus (R-3-SS-1.5-L21)
A-5000-3554	03969334	M3-Stylus (R-4-SS-2.5-L31)
A-5000-3603	03969212	M2-Stylus (R-2-SS-1.3-L20)
A-5000-3604	03969203	M2-Stylus (R-3-SS-1.5-L10)
A-5000-3611	03969241	M2-Disc Stylus (R-6-SS-L10)
A-5000-3613	03969243	M2-Disc Stylus (CE-18-SS-L3.7)
A-5000-3614	03969218	M2-Hollow Ball Stylus (CE-18-L11)
A-5000-3626	03969056	M2-Star Stylus 5-way (R-2-SS-1.4-SP20/30)
A-5000-3627	03969054	M2-Styli Holder 5-way (SS-L7.5)
A-5000-3709	03969426	M4-Stylus (R-6-CE-4.5-L50)
A-5000-3712	03969427	M4-Stylus (R-6-CE-4.5-L100)
A-5000-4154	03969204	M2-Stylus (R-4-SS-1.65-L10)
A-5000-4155	03969205	M2-Stylus (R-5-SS-2.5-L10)
A-5000-4156	03969206	M2-Stylus (R-6-SS-2.7-L10)
A-5000-4158	03969208	M2-Stylus (R-8-SS-2.7-L11)
A-5000-4160	03969213	M2-Stylus (R-3-SS-1.5-L20)
A-5000-4161	03969214	M2-Stylus (R-4-SS-2-L20)
A-5000-7534	03969059	M2-Stylus Knuckle (SS-L8)
A-5000-7547	03969402	M4-Stylus (R-2-SS-1.4-L19)
A-5000-7606	03969304	M3-Stylus (R-4-SS-2.5-L21)
A-5000-7610	03969046	M3-Styli Holder 5-way (SS-L13)
A-5000-7616	03969060	M3-Stylus Knuckle (SS-L12)
A-5000-7629	03969055	M2-Star Stylus 5-way (R-2-SS-1.4-SP20/20)
A-5000-7630	03969305	M3-Stylus (R-5-SS-2.5-L21)
A-5000-7632	03969310	M3-Stylus - Stepped (R-0.5-TC-0.32/0.7-L21)
A-5000-7648	03969335	M3-Stylus - Tapered (R-5-SS-L31)
A-5000-7754	03969401	M4-Stylus Extension (CE-7-SS-7.5-L30)
A-5000-7795	03969408	M4-Stylus (R-8-CE-4.5-L50)
A-5000-7796	03969418	M4-Stylus (R-8-CE-4.5-L100)
A-5000-7800	03969268	M2-Stylus (R-0.3-TC-0.2-L10)
A-5000-7801	03969267	M2-Stylus (R-0.7-TC-0.5-L10)
A-5000-7802	03969428	M2-Stylus (R-1.5-SS-0.7-L10)
A-5000-7803	03969225	M2-Stylus (R-2.5-SS-1-L10)

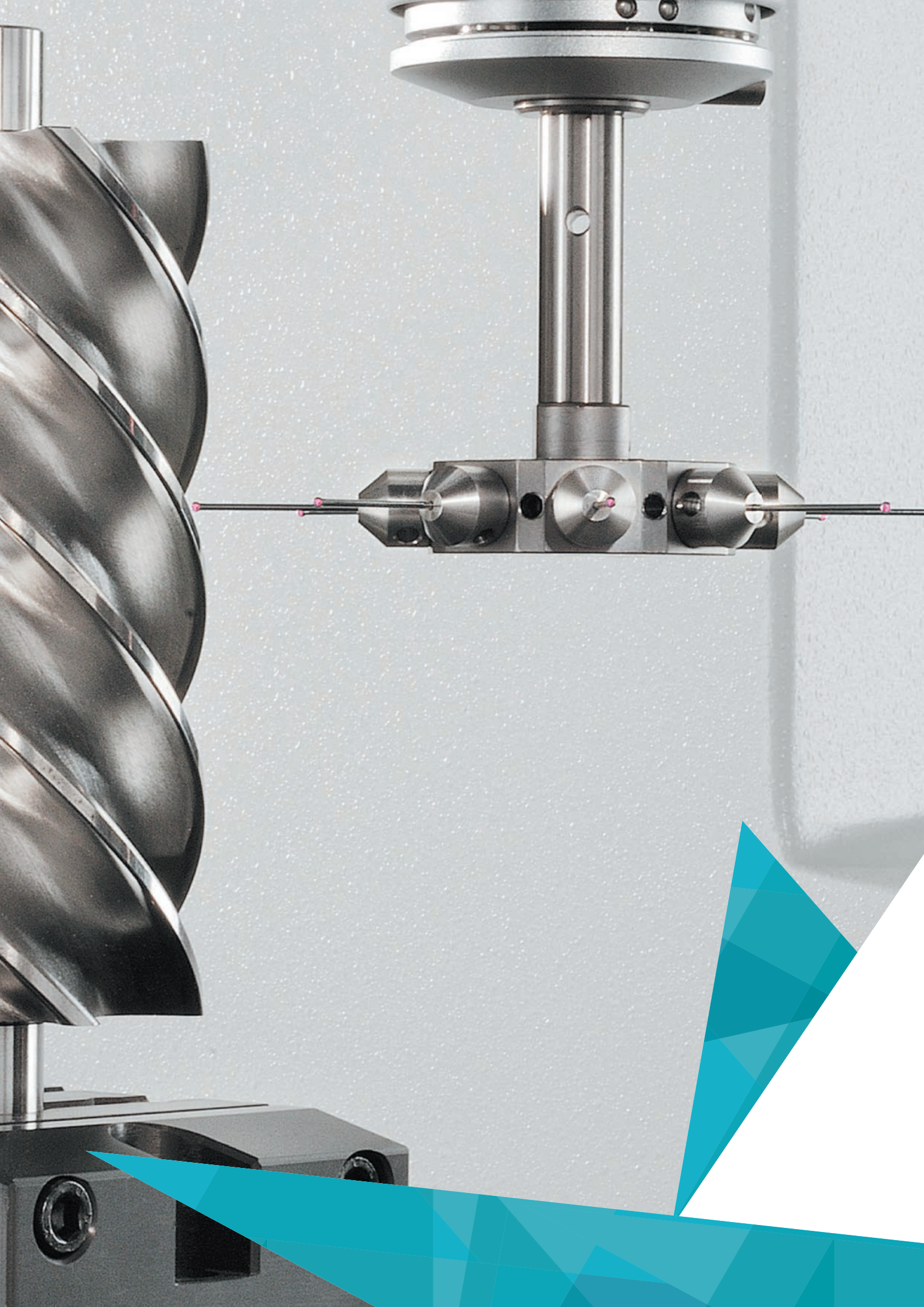
Renishaw Part No.	Hexagon Part No.	Item Description
A-5000-7804	03969226	M2-Stylus (R-2.5-SS-1.4-L20)
A-5000-7805	03969220	M2-Stylus - Stepped (R-0.5-TC-0.32/0.7-L10)
A-5000-7806	03969201	M2-Stylus (R-1-SS-0.7-L10)
A-5000-7807	03969202	M2-Stylus (R-2-SS-1.1-L10)
A-5000-7808	03969221	M2-Stylus (R-1-TC-0.7-L20)
A-5000-7809	03969242	M2-Disc Stylus (SV-18-SS-L7.5)
A-5000-7812	03969292	M2-Spherical Cylinder Stylus (R-2-TC-1.6-L20)
A-5000-7813	03969141	M2-Pointer Stylus (TC-3-L10-DEG30)
A-5000-7814	03969330	M2-Hollow Ball Stylus (CE-30-L17)
A-5000-8663	03969259	M2-Stylus (R-1-TC-0.7-L27)
A-5000-8876	03969445	M2-Spherical Cylinder Stylus (R-1-L15)
A-5003-0033	03969271	M2-Stylus (R-1-TC-0.8-L20)
A-5003-0034	03969272	M2-Stylus (R-1.5-TC-1-L20)
A-5003-0035	03969261	M2-Stylus (R-1.5-TC-1-L30)
A-5003-0036	03969262	M2-Stylus (R-2-TC-1.5-L30)
A-5003-0037	03969282	M2-Stylus (R-2-TC-1.5-L40)
A-5003-0040	03969263	M2-Stylus (R-3-TC-2-L30)
A-5003-0041	03969283	M2-Stylus (R-3-TC-2-L40)
A-5003-0042	03969293	M2-Stylus (R-3-TC-2-L50)
A-5003-0043	03969429	M2-Stylus (R-4-TC-2-L30)
A-5003-0044	03969284	M2-Stylus (R-4-TC-2-L40)
A-5003-0045	03969294	M2-Stylus (R-4-TC-2-L50)
A-5003-0046	03969430	M2-Stylus (R-5-TC-2-L20)
A-5003-0049	03969295	M2-Stylus (R-5-TC-2.5-L50)
A-5003-0050	03969431	M3-Stylus (R-1.5-TC-1-L20)
A-5003-0051	03969432	M3-Stylus (R-1.5-TC-1-L30)
A-5003-0052	03969322	M3-Stylus (R-2-TC-1.5-L30)
A-5003-0053	03969433	M3-Stylus (R-2-TC-1-L40)
A-5003-0054	03969332	M3-Stylus (R-2.5-TC-2-L21)
A-5003-0055	03969342	M3-Stylus (R-2.5-TC-2-L30)
A-5003-0057	03969313	M3-Stylus (R-3-TC-2-L30)
A-5003-0058	03969343	M3-Stylus (R-3-TC-2-L40)
A-5003-0059	03969353	M3-Stylus (R-3-TC-2-L50)
A-5003-0060	03969434	M3-Stylus (R-4-TC-2-L40)
A-5003-0061	03969435	M3-Stylus (R-4-TC-2-L50)

CROSS REFERENCE NUMBERS

TOUCH TRIGGER STYLI AND ACCESSORIES

Renishaw Part No.	Hexagon Part No.	Item Description
A-5003-0063	03969436	M3-Stylus (R-5-TC-2-L50)
A-5003-0064	03969223	M2-Stylus (R-3-CE-2-L50)
A-5003-0065	03969224	M2-Stylus (R-4-CE-2-L50)
A-5003-0067	03969437	M3-Stylus (R-3-CE-1.5-L50)
A-5003-0071	03969246	M2-Stylus Extension (CE-3-SS-3-L40)
A-5003-0072	03969247	M2-Stylus Extension (CE-3-SS-3-L50)
A-5003-0074	03969280	M2-Spherical Cylinder Stylus (TC/TC-2-L40)
A-5003-0076	03969058	M3-Star Stylus 5-way (R-2-SS-1.4-SP20/30)
A-5003-0577	03969438	M2-Stylus (R-0.7-TC-0.5-L20)
A-5003-0938	03969439	M2-Stylus (R-3-TC-1.5-L20)
A-5003-1029	03969440	M2-Stylus (R-4-TC-2-L20)
A-5003-1210	03969277	M2-Spherical Cylinder Stylus (TC/TC-0.5-L15.3)
A-5003-1218	03969278	M2-Spherical Cylinder Stylus (TC/TC-1-L35.5)
A-5003-1228	03969279	M2-Spherical Cylinder Stylus (TC/TC-2-L16)
A-5003-1258	03969281	M2-Spherical Cylinder Stylus (TC/TC-3-L22.5)
A-5003-1325	03969441	M2-Stylus (R-1-TC-0.8-L10)
A-5003-1345	03969269	M2-Stylus (R-0.5-TC-0.3-L20)
A-5003-1370	03969442	M2-Stylus (R-4-CE-2-L30)
A-5003-2280	03969270	M2-Stylus Extension (CF-3-SS-3.5-L40)
A-5003-2281	03969238	M2-Stylus Extension (CF-3-SS-3.5-L50)
A-5003-2282	03969239	M2-Stylus Extension (CF-3-SS-3.5-L70)
A-5003-2283	03969240	M2-Stylus Extension (CF-3-SS-3.5-L90)
A-5003-2285	03969260	M2-Stylus (R-4-CF-3-L50)
A-5003-2286	03969425	M2-Stylus (R-5-CF-3-L50)
A-5003-2287	03969276	M2-Stylus (R-6-CF-3-L50)
A-5003-2300	03969701	M2-Key for Carbon Fibre Extensions
A-5003-3822	03969222	M2-Stylus (R-2-TC-1-L20)
A-5003-4011	03969422	M2-Star Stylus 4-way (R-0.5-TC-0.3-SP10)
A-5003-4782	03969286	M2-Stylus (R-6-CF-3-L30)
A-5003-4784	03969424	M2-Stylus (R-4-CF-2-L75)
A-5003-4787	03969210	M2-Star Stylus 4-way (R-0.5-TC-0.3-SP20)
A-5003-4788	03969423	M2-Star Stylus 4-way (R-1-TC-0.7-SP20)
A-5003-4860	03969450	M3-Stylus (R-6-CF-4-L75)
A-5003-4864	03969446	M3-Stylus Extension (CF-4-DA-5.5-L75)
A-5003-4865	03969447	M3-Stylus Extension (CF-4-DA-5.5-L100)

Renishaw Part No.	Hexagon Part No.	Item Description
A-5003-5723	03969421	M3-Stylus (SN-2-TC-1.4-L21)
A-5004-0422	03969324	M3-Stylus (R-3-SS-1.5-L10)
A-5004-1979	03969420	M3-Stylus (SN-1-TC-0.7-L21.5)
A-5004-7582	03969600	M2/M3-Mounting Pin
A-5004-7583	03969045	M3-Stylus Extension (SS-4-L20)
A-5004-7584	03969320	M3-Stylus Extension (SS-4-L35)
A-5004-7585	03969231	M2-Stylus Extension (SS-3-L10)
A-5004-7586	03969232	M2-Stylus Extension (SS-3-L20)
A-5004-7588	03969200	M2-Pointer Stylus (SS-3-L15-DEG30)
A-5004-7589	03969251	M2-Cylinder Stylus (SS-1.5-SS-1-L11)
A-5004-7590	03969253	M2-Cylinder Stylus (SS-3-SS-1.5-L13)
A-5004-7591	03969233	M2-Stylus Extension (SS-3-L30)
A-5004-7592	03969062	M3/M2-Stylus Adapter (SS-L5)
A-5004-7593	03969061	M2/M3-Stylus Adapter (SS-L7)
A-5004-7597	03969403	M4/M3-Stylus Adapter (SS-L9)
A-5004-7609	03969044	M3-Stylus Extension (SS-4-L10)
A-5004-7610	03969230	M2-Stylus Extension (SS-3-L5)
A-5004-7611	03969234	M2-Stylus Extension (SS-3-L40)
M-5000-3540	03969600	M2/M3-Mounting Pin
M-5000-3592	03969045	M3-Stylus Extension (SS-4-L20)
M-5000-3593	03969320	M3-Stylus Extension (SS-4-L35)
M-5000-3647	03969231	M2-Stylus Extension (SS-3-L10)
M-5000-3648	03969232	M2-Stylus Extension (SS-3-L20)
M-5000-4150	03969200	M2-Pointer Stylus (SS-3-L15-DEG30)
M-5000-4152	03969251	M2-Cylinder Stylus (SS-1.5-SS-1-L11)
M-5000-4153	03969253	M2-Cylinder Stylus (SS-3-SS-1.5-L13)
M-5000-4162	03969233	M2-Stylus Extension (SS-3-L30)
M-5000-4163	03969062	M3/M2-Stylus Adapter (SS-L5)
M-5000-4164	03969061	M2/M3-Stylus Adapter (SS-L7)
M-5000-6714	03969403	M4/M3-Stylus Adapter (SS-L9)
M-5000-7633	03969044	M3-Stylus Extension (SS-4-L10)
M-5000-7634	03969230	M2-Stylus Extension (SS-3-L5)
M-5000-7779	03969234	M2-Stylus Extension (SS-3-L40)
M-5000-7813	03969141	M2-Pointer Stylus (TC-3-L10-DEG30)



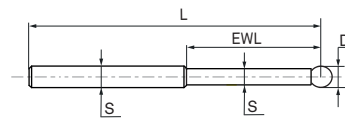
SCANNING

STYLI AND ACCESSORIES

D2 Styli	Page
Styli	38
M3 Styli and Accessories	
Styli	40
Stylus Extensions	42
Stylus Accessories	43
Clampings & Holders	44
Stylus Kits	47
M5 Styli and Accessories	
Styli	51
Stylus Extensions	57
Stylus Accessories	59
Clampings & Holders	61
Stylus Kits	64
Tools	
Tools	66
Cross Reference Numbers	
Renishaw ITP Hexagon	67

D2-STYLI WITH RUBY BALL

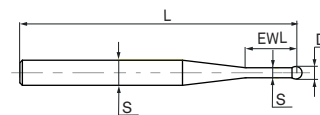
Stem: Tungsten Carbide (stepped)



Part No.	Material	L	D	S	EWL	W
060-694.065-000	R / TC	22.00	2.0	1.5 / 2.0	9.60	0.8
060-694.066-000	R / TC	22.00	1.5	1.2 / 2.0	9.60	0.8

D2-STYLI WITH RUBY BALL

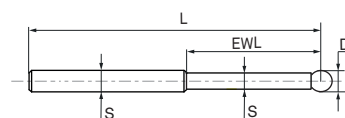
Stem: Tungsten Carbide (tapered)



Part No.	Material	L	D	S	EWL	W
M00-694-067-005	R / TC	22.00	0.3	0.2 / 2.0	4.00	0.7
M00-694-064-005	R / TC	22.00	0.5	0.3 / 2.0	4.00	0.7
M00-694-063-005	R / TC	22.00	0.8	0.6 / 2.0	4.00	0.8
M00-694-062-005	R / TC	22.00	1.0	0.8 / 2.0	4.00	0.8
M02-J01-100-008	R / TC	34.00	1.0	0.8 / 2.0	14.00	1.0

D2-STYLI WITH SILICON NITRIDE BALL

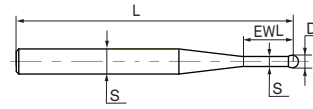
Stem: Tungsten Carbide (stepped)



Part No.	Material	L	D	S	EWL	W
M00-694-078-000	SN / TC	22.00	1.5	1.2 / 2.0	9.60	0.7
M00-694-079-000	SN / TC	22.00	2.0	1.5 / 2.0	9.60	0.8

D2-STYLUS WITH SILICON NITRIDE BALL

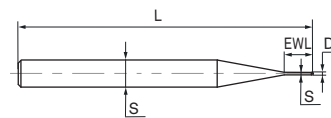
Stem: Tungsten Carbide (tapered)



Part No.	Material	L	D	S	EWL	W
M00-694-077-000	SN / TC	22.00	1.0	0.8 / 2.0	4.00	-

D2-STYLI WITH TUNGSTEN CARBIDE BALL

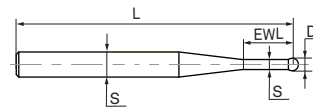
Stem: Tungsten Carbide (tapered)



Part No.	Material	L	D	S	EWL	W
M00-694-070-000	TC / TC	22.00	0.1	0.08 / 2.0	2.00	-
M00-694-071-000	TC / TC	22.00	0.2	0.17 / 2.0	2.00	-

D2-STYLUS WITH DIAMOND SPHERE

Stem: Tungsten Carbide (tapered)



Part No.	Material	L	D	S	EWL	W
M00-694-190-000	DS / TC	22.00	1.0	0.8 / 2.0	4.00	1.4

M3-STYLUS WITH RUBY BALL

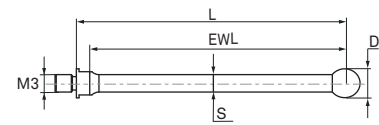
Stem: Stainless Steel (stepped)



Part No.	Material	L	D	S	EWL	W
M00-1121-026-000	R / SS	39.50	2.0	1.0 / 2.0	3.20	1.5

M3-STYLI WITH RUBY BALL

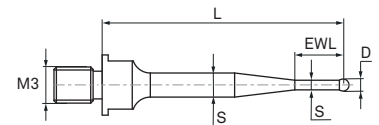
Stem: Stainless Steel



Part No.	Material	L	D	S	EWL	W
M00-694-210-000	R / SS	20.00	1.5	1.0	17.50	0.7
M00-694-211-000	R / SS	20.00	3.0	2.0	17.50	2.3
M00-694-212-000	R / SS	20.00	5.0	3.0	17.50	1.7
M00-694-213-000	R / SS	20.00	8.0	3.0	17.50	2.4
M00-694-220-000	R / SS	50.00	3.0	2.0	47.50	1.8
M00-694-221-000	R / SS	50.00	5.0	3.0	47.50	3.3
M00-694-240-000	R / SS	75.00	5.0	3.0	72.50	4.7
M00-694-230-000	R / SS	100.00	5.0	3.0	97.50	6.0

M3-STYLUS WITH RUBY BALL

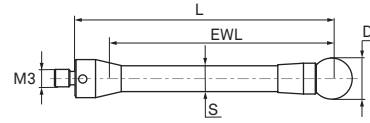
Stem: Stainless Steel (tapered)



Part No.	Material	L	D	S	EWL	W
M00-694-214-000	R / SS	20.00	1.00	0.8 / 2.0	4.00	0.9

M3-STYLI WITH RUBY BALL

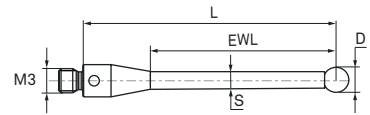
Stem: Carbon Fibre



Part No.	Material	L	D	S	EWL	W
M00-694-222-000	R / CF	50.00	8.0	5.0	50.00	2.9
M00-694-241-000	R / CF	75.00	8.0	5.0	75.00	3.7
M00-694-231-000	R / CF	100.00	8.0	5.0	100.00	4.5

M3-STYLUS WITH RUBY BALL

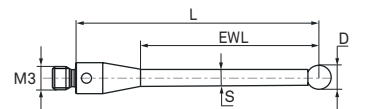
Stem: Ceramic



Part No.	Material	L	D	S	EWL	W
M00-1121-020-000	R / CE	50.00	5.0	2.5	41.00	1.5

M3-STYLI WITH DIAMOND COATED SPHERE

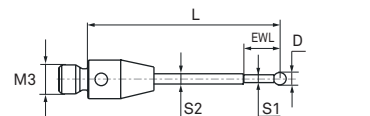
Stem: Tungsten Carbide



Part No.	Material	L	D	S	EWL	W
M00-694-198-000	DC / TC	20.00	3.0	2.0	14.00	-
M00-694-199-000	DC / TC	50.00	3.0	2.0	44.00	-

M3-STYLUS WITH DIAMOND COATED SPHERE

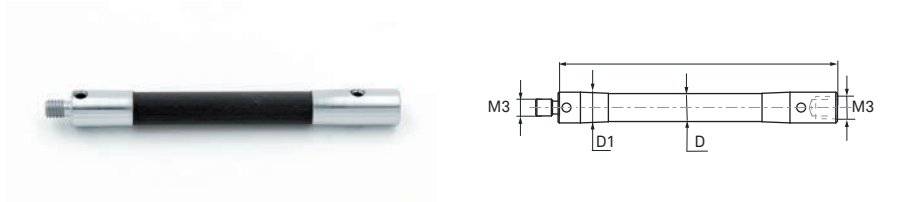
Stem: Tungsten Carbide (stepped)



Part No.	Material	L	D	S	EWL	W
M00-694-197-000	DC / TC	20	1.0	0.8 / 1.0	4.50	-

M3-STYLUS EXTENSIONS

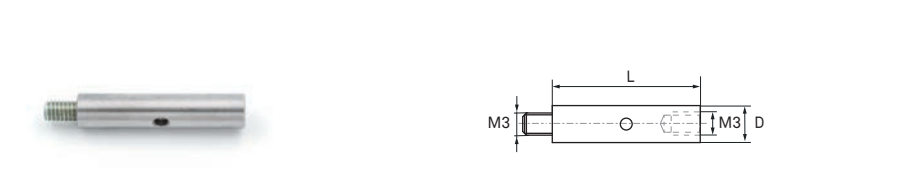
Stem: Carbon Fibre
End Pieces: Dispal®



Part No.	Material	L	D	D1	W
M00-694-245-000	CF / DA	50.00	5.0	5.5	1.9
M00-694-248-000	CF / DA	150.00	5.0	5.5	4.8

M3-STYLUS EXTENSION

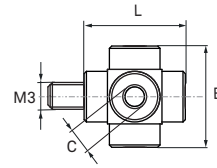
Material: Stainless Steel



Part No.	Material	L	D	D1	W
M00-694-280-000	SS	20	5.0	-	2.4

M3-CUBES

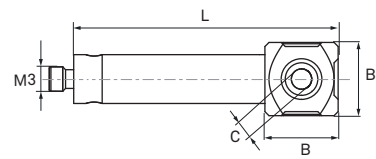
Material: Dispal®



Part No.	Material	L	B	C	W
M00-694-243-000	DA	13.00	13.00	5 x M3	2.3
M00-694-246-000	DA	13.00	13.00	5 x D2	2.3

M3-CUBE WITH EXTENSION

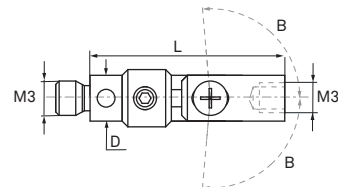
Material: Stainless Steel



Part No.	Material	L	B	C	W
M00-1126-001-000	SS	32.50	9.0 x 9.0	5 x M3	9.5

M3-ROTARY STYLUS KNUCKLE

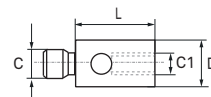
Material: Stainless Steel



Part No.	Material	L	D	B	W
M00-1125-002-000	SS	17.00	4.0	± 95°	2.2

M3/M2-STYLUS ADAPTER

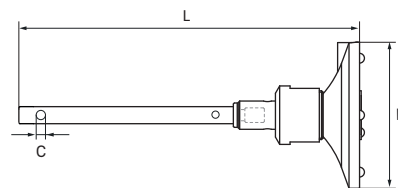
Material: Stainless Steel



Part No.	Material	L	D	C	C1	W
M00-1126-011-000	SS	5.00	4.0	M3	M2	0.6

HP-S-X1C/H STYLUS CLAMPING WITH HOLDER 90°

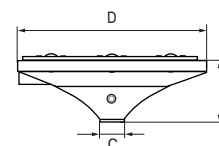
Material: Stainless Steel



Part No.	Material	L	D	C	W
M00-694-055-000	SS	69.69	30.0	D2	19.0

HP-S-X1C/H STYLUS CLAMPINGS

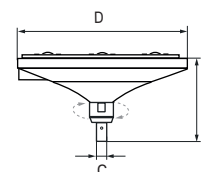
Material: Aluminium



Part No.	Material	L	D	C	W
M00-694-275-000	AL	9.30	30.0	D2	7.5
M00-694-209-000	AL	9.30	30.0	M3	7.4

HP-S-X1C/H STYLUS CLAMPING (ROTATABLE)

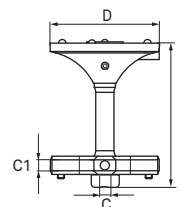
Material: Aluminium / Dispal®



Part No.	Material	L	D	C	W
M00-694-244-000	AL / DA	22.00	30.0	M3	14.8

HP-S-X1C/H STYLUS CLAMPINGS WITH STAR HOLDER

Material: Aluminium / Dispal®



Part No.	Material	L	D	C	C1	W
M00-694-271-000	AL / DA	39.50	30.0	D2	4 x D2	17.5
M00-694-270-000	AL / DA	36.50	30.0	M3	4 x M3	15.5
M00-694-272-000	AL / DA	39.50	30.0	D2	8 x D2	18.1
M00-694-273-000	AL / DA	36.50	30.0	M3	8 x M3	16.4

HP-S-X1C/H STYLUS CLAMPING WITH STYLUS HOLDER 30°/45°

Material: Aluminium / Dispal®



Part No.	Material	L	D	C	C1	W
M00-694-274-000	AL / DA	22.00	30.0	M3	2 x M3	12.4

HP-S-X1S STYLUS CLAMPINGS

Material: Aluminium / Dispal®



Part No.	Material	L	D	C	W
M00-694-208-000	AL / DA	9.30	30.0	D2	6.8
M00-694-200-000	AL / DA	9.30	30.0	M3	6.9

HP-S-X1S STYLUS CLAMPING

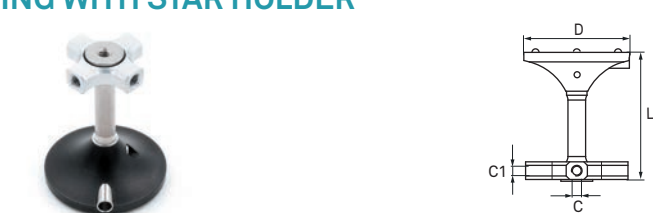
Material: Aluminium / Dispal®



Part No.	Material	L	D	C	W
M00-694-206-000	AL / DA	24.30	30.0	M3	8.8

HP-S-X1S STYLUS CLAMPING WITH STAR HOLDER

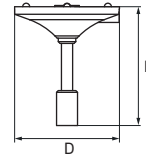
Material: Aluminium / Dispal®



Part No.	Material	L	D	C	C1	W
M00-694-279-000	AL / DA	36.50	30.0	M3	4 x M3	13.5

HP-S-X1S STYLUS CLAMPING WITH PORT ADJUSTMENT STYLUS

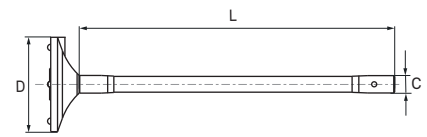
Material: Aluminium / Stainless Steel



Part No.	Material	L	D	C	W
M00-694-250-000	AL / SS	35.00	30.0	-	10.1

HP-S-X1M STYLUS CLAMPINGS WITH CARBON FIBRE EXTENSION

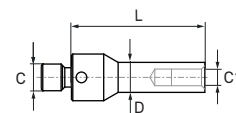
Material: Aluminium / Dispal®



Part No.	Material	L	D	C	W
M00-694-201-000	AL / DA	100.00	30.0	M3	11.6
M00-694-202-000	AL / DA	115.00	30.0	M3	11.2
M00-694-207-000	AL / DA	150.00	30.0	M3	12.2

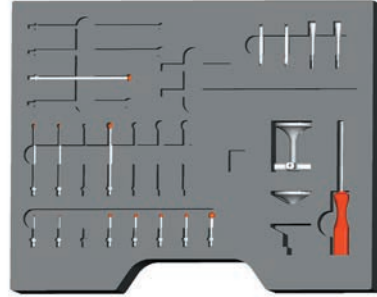
M4/M3-STYLUS ADAPTER

Material: Stainless Steel



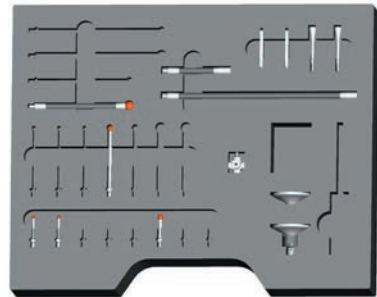
Part No.	Material	L	D	C	C1	W
M00-1126-012-000	SS	20.00	4.5	M4	M3	3.5

M3-STYLUS KIT FOR HP-S-X1C SENSOR



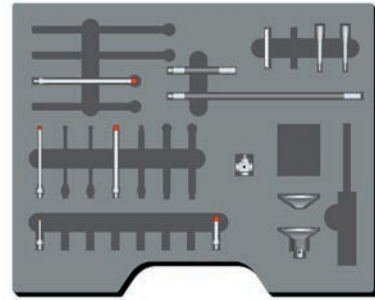
Part No.	Item Description	Contents	QTY
M00-694-008-000	M3-Stylus Kit for HP-S-X1C Sensor		
	HP-S-X1C/H Stylus Clamping (1x M3)	M00-694-209-000	1
	HP-S-X1C/H Stylus Clamping with Star Holder (5x M3)	M00-694-270-000	1
	M3-Stylus (R-1.5-SS-1-L20)	M00-694-210-000	2
	M3-Stylus (R-3-SS-2-L20)	M00-694-211-000	4
	M3-Stylus (R-5-SS-3-L20)	M00-694-212-000	1
	M3-Stylus (R-3-SS-2-L50)	M00-694-220-000	2
	M3-Stylus (R-5-SS-3-L50)	M00-694-221-000	1
	M3-Stylus (R-5-SS-3-L75)	M00-694-240-000	1
	Mounting Key AF4.1/3.6 mm (SS-L30)	M00-114-006-130	2
	Hexagon Socket Screwdriver AF1.5 mm	M02-B04-000-035	1
	Mounting Pin	M00-114-006-140	2
	Storage Box		1

M3-STYLUS KIT FOR HP-S-X1H SENSOR



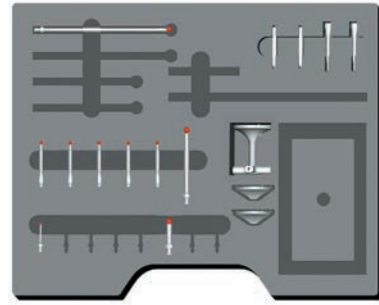
Part No.	Item Description	Contents	QTY
M00-694-014-000	M3-Stylus Kit for HP-S-X1H Sensor		
	HP-S-X1C/H Stylus Clamping (Rotatable) (1x M3)	M00-694-244-000	1
	HP-S-X1C/H Stylus Clamping (1x M3)	M00-694-209-000	1
	M3-Stylus (R-3-SS-2-L20)	M00-694-211-000	2
	M3-Stylus (R-5-SS-3-L20)	M00-694-212-000	1
	M3-Stylus (R-5-SS-3-L50)	M00-694-221-000	1
	M3-Stylus (R-8-CF-5-L75)	M00-694-241-000	1
	M3-Stylus Extension (CF-5-DA-5.5-L50)	M00-694-245-000	1
	M3-Stylus Extension (CF-5-DA-5.5-L150)	M00-694-248-000	1
	M3-Cube 13x13 mm (5x M3) (DA)	M00-694-243-000	1
	Mounting Key AF4.1/3.6 mm (SS-L30)	M00-114-006-130	2
	Mounting Pin	M00-114-006-140	2
	Storage Box		1

M3-STYLUS KIT FOR HP-S-X1C/H SENSORS



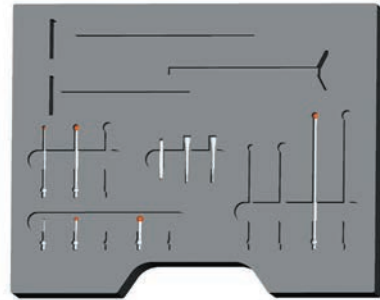
Part No.	Item Description	Contents	QTY
M00-694-024-000	M3-Stylus Kit for HP-S-X1C/H Sensors		
	HP-S-X1C/H Stylus Clamping (1x M3)	M00-694-209-000	1
	HP-S-X1C/H Stylus Clamping (Rotatable) (1x M3)	M00-694-244-000	1
	M3-Stylus (R-1.5-SS-1-L20)	M00-694-210-000	1
	M3-Stylus (R-5-SS-3-L20)	M00-694-212-000	1
	M3-Stylus (R-3-SS-2-L50)	M00-694-220-000	1
	M3-Stylus (R-5-SS-3-L50)	M00-694-221-000	1
	M3-Stylus (R-5-SS-3-L75)	M00-694-240-000	1
	M3-Stylus Extension (CF-5-DA-5.5-L50)	M00-694-245-000	1
	M3-Stylus Extension (CF-5-DA-5.5-L150)	M00-694-248-000	1
	M3-Cube 13x13 mm (5x M3) (DA)	M00-694-243-000	1
	Mounting Key AF4.1/3.6 mm (SS-L30)	M00-114-006-130	1
	Mounting Pin	M00-114-006-140	2
	Storage Box		1

M3-STYLUS KIT FOR HP-S-X1C SENSOR (TIGO SF)



Part No.	Item Description	Contents	QTY
M00-694-019-000	M3-Stylus Kit for HP-S-X1C Sensor (TIGO SF)		
	HP-S-X1C/H Stylus Clamping (1x M3)	M00-694-209-000	2
	HP-S-X1C/H Stylus Clamping with Star Holder (5x M3)	M00-694-270-000	1
	M3-Stylus (R-1.5-SS-1-L20)	M00-694-210-000	1
	M3-Stylus (R-5-SS-3-L20)	M00-694-212-000	1
	M3-Stylus (R-3-TC-2-L30)	03969313	5
	M3-Stylus (R-5-SS-3-L50)	M00-694-221-000	1
	M3-Stylus (R-5-SS-3-L100)	M00-694-230-000	1
	Mounting Key AF4.1/3.6 mm (SS-L30)	M00-114-006-130	2
	Mounting Pin	03969600	2
	Storage Box		1

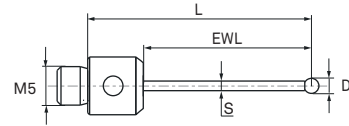
M3-STYLUS KIT FOR HP-S-X1S SENSOR



Part No.	Item Description	Contents	QTY
M00-694-009-000	M3-Stylus Kit for HP-S-X1S Sensor		
	M3-Stylus (R-1.5-SS-1-L20)	M00-694-210-000	1
	M3-Stylus (R-3-SS-2-L20)	M00-694-211-000	1
	M3-Stylus (R-5-SS-3-L20)	M00-694-212-000	1
	M3-Stylus (R-3-SS-2-L50)	M00-694-220-000	1
	M3-Stylus (R-5-SS-3-L50)	M00-694-221-000	1
	M3-Stylus (R-5-SS-3-L100)	M00-694-230-000	1
	Mounting Key AF4.1/3.6 mm (SS-L30)	M00-114-006-130	1
	Mounting Pin	M00-114-006-140	2
	Storage Box		1

M5-STYLI WITH RUBY BALL

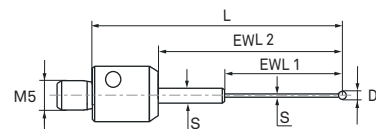
Stem: Tungsten Carbide



Part No.	Material	L	D	S	EWL	W
M00-1121-011-000	R / TC	14.50	1.0	0.8	3.50	9.5
M00-1121-003-000	R / TC	20.00	3.0	2.0	9.00	10.0
M00-1121-048-000	R / TC	23.50	3.0	2.0	12.50	10.0
M00-1121-046-000	R / TC	29.00	2.0	1.5	18.00	10.0
060-694.150-007	R / TC	30.00	2.0	1.5	19.00	9.8
M00-1121-004-000	R / TC	30.00	3.0	2.0	19.00	11.0
M00-1121-049-000	R / TC	32.00	3.0	2.0	21.00	11.0
060-694.050-000	R / TC	35.00	3.0	2.0	24.00	10.4
M00-1121-047-000	R / TC	39.00	2.0	1.5	28.00	10.0
060-694.150-013	R / TC	41.00	2.0	1.5	30.00	10.1
M00-1121-050-000	R / TC	48.50	3.0	2.0	37.50	11.5
060-694.051-000	R / TC	50.00	3.0	2.0	39.00	11.0
M00-694-150-017	R / TC	55.00	4.0	2.5	44.00	12.5
M00-1121-051-000	R / TC	56.50	3.0	2.0	45.50	12.0
060-694.053-000	R / TC	60.00	5.0	3.5	47.00	17.9
M00-1121-052-000	R / TC	62.00	4.0	2.0	51.00	12.0
M00-1121-053-000	R / TC	72.50	5.0	3.5	61.50	20.0
M00-694-150-018	R / TC	80.00	4.0	2.5	69.00	14.3
060-694.054-000	R / TC	80.00	5.0	3.5	67.00	20.7
060-694.056-000	R / TC	90.00	8.0	6.0	72.00	46.5
060-694.150-005	R / TC	91.00	3.5	3.0	78.00	28.0
M00-1121-054-000	R / TC	97.50	5.0	3.5	86.50	24.0
M00-1121-044-000	R / TC	98.25	3.5	2.5	87.25	16.0
M00-1121-017-000	R / TC	98.50	3.0	2.0	87.50	14.0
M00-694-138-000	R / TC	130.00	8.0	6.0	112.00	62.8
060-694.150-014	R / TC	176.00	8.0	6.0	158.00	81.5

M5-STYLI WITH RUBY BALL

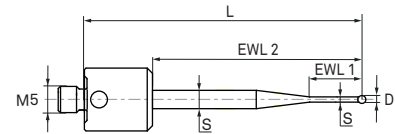
Stem: Tungsten Carbide (stepped)



Part No.	Material	L	D	S	EWL 1/2	W
M00-1121-058-000	R / TC	21.75	0.5	0.3 / 1.0	2.25 / 10.75	10.0
M00-1121-043-000	R / TC	29.25	1.5	1.0 / 1.5	7.25 / 18.25	10.0
M00-1121-045-000	R / TC	29.50	1.0	0.8 / 1.0	4.50 / 18.50	9.5
M00-1121-041-000	R / TC	43.25	1.5	1.0 / 4.0	19.00 / 32.25	10.0
M00-1121-042-000	R / TC	57.00	2.0	1.5 / 4.0	32.00 / 46.00	11.0
060-694.150-006	R / TC	66.00	2.0	1.5 / 4.0	15.00 / 56.00	13.0

M5-STYLUS WITH RUBY BALL

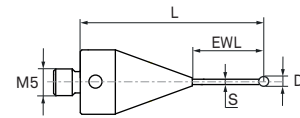
Stem: Tungsten Carbide (tapered)



Part No.	Material	L	D	S	EWL 1/2	W
M00-694-150-019	R / TC	53.00	1.5	1.0 / 3.5	10.00 / 40.00	15.0

M5-STYLI WITH RUBY BALL

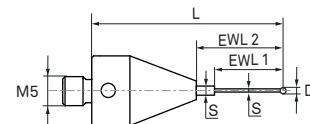
Stem: Tungsten Carbide



Part No.	Material	L	D	S	EWL	W
M00-1121-002-000	R / TC	20.00	1.0	0.7	5.00	9.3
M00-694-150-016	R / TC	28.00	1.5	1.0	7.00	10.2
M00-1121-056-000	R / TC	30.00	0.7	0.5	5.00	15.0
M02-J01-100-001	R / TC	40.00	1.5	1.0	19.00	10.3
M02-J01-100-003	R / TC	60.00	2.0	1.5	39.50	11.6

M5-STYLUS WITH RUBY BALL

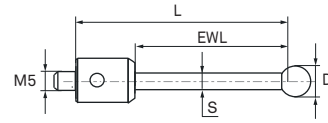
Stem: Tungsten Carbide (stepped)



Part No.	Material	L	D	S	EWL 1/2	W
M00-1121-055-000	R / TC	30.00	0.5	0.4 / 0.7	4.00 / 5.00	15.0

M5-STYLI WITH RUBY BALL

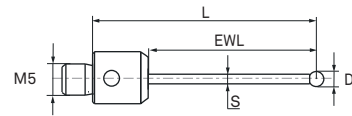
Stem: Ceramic



Part No.	Material	L	D	S	EWL	W
060-813.042-000	R / CE	90.00	8.0	6.0	72.00	22.5
060-813.041-000	R / CE	125.00	8.0	6.0	107.00	27.0
M00-694-110-000	R / CE	250.00	10.0	7.0	225.00	66.2
M00-694-111-000	R / CE	300.00	10.0	7.0	275.00	73.5
M00-694-112-000	R / CE	350.00	10.0	7.0	325.00	81.2
M00-694-113-000	R / CE	500.00	12.0	8.0	475.00	126.2

M5-STYLI WITH SILICON NITRIDE BALL

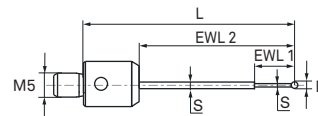
Stem: Tungsten Carbide



Part No.	Material	L	D	S	EWL	W
M00-694-126-000	SN / TC	30.00	2.0	1.5	19.00	9.9
M00-1121-029-000	SN / TC	32.00	3.0	2.0	21.00	11.0
M00-1121-023-000	SN / TC	33.50	3.0	2.0	22.50	11.0
M00-694-120-000	SN / TC	35.00	3.0	2.0	24.00	10.4
M00-1121-024-000	SN / TC	39.00	2.0	1.5	28.00	10.0
M00-694-127-000	SN / TC	41.00	2.0	1.5	30.00	10.1
M00-1121-035-000	SN / TC	48.50	3.0	2.0	37.50	11.5
M00-694-121-000	SN / TC	50.00	3.0	2.0	39.00	11.1
M00-694-132-000	SN / TC	55.00	4.0	2.5	44.00	12.7
M00-1121-025-000	SN / TC	56.50	3.0	2.0	45.50	12.0
M00-694-122-000	SN / TC	60.00	5.0	3.5	47.00	17.8
M00-1121-027-000	SN / TC	62.00	4.0	2.0	51.00	12.0
M00-1121-028-000	SN / TC	72.50	5.0	3.5	61.50	20.0
M00-1121-022-000	SN / TC	78.00	4.0	2.5	67.00	12.5
M00-694-133-000	SN / TC	80.00	4.0	2.5	59.00	14.3
M00-694-123-000	SN / TC	80.00	5.0	3.5	67.00	20.8
M00-694-142-000	SN / TC	80.00	5.0	3.5	67.00	21.3
M00-694-124-000	SN / TC	90.00	8.0	6.0	72.00	46.6
M00-1121-001-000	SN / TC	97.50	5.0	3.5	86.50	24.0
M00-1121-019-000	SN / TC	98.50	3.0	2.0	87.50	13.5
M00-1121-013-000	SN / TC	118.00	4.0	3.0	107.00	22.0
M00-694-125-000	SN / TC	125.00	8.0	6.0	107.00	60.6
M00-694-143-000	SN / TC	130.00	8.0	6.0	112.00	63.6
M00-694-128-000	SN / TC	176.00	8.0	6.0	158.00	84.0

M5-STYLI WITH SILICON NITRIDE BALL

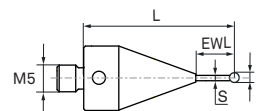
Stem: Tungsten Carbide (stepped)



Part No.	Material	L	D	S	EWL 1/2	W
M00-1121-010-000	SN / TC	19.00	1.0	0.8 / 1.0	4.50 / 8.00	10.0
M00-1121-036-000	SN / TC	29.50	1.0	0.8 / 1.0	4.50 / 18.50	9.5

M5-STYLUS WITH SILICON NITRIDE BALL

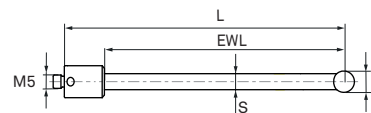
Stem: Tungsten Carbide



Part No.	Material	L	D	S	EWL	W
M00-694-131-000	SN / TC	28.00	1.5	1.0	7.00	10.4

M5-STYLUS WITH SILICON NITRIDE BALL

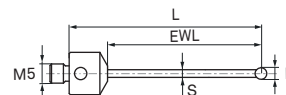
Stem: Ceramic



Part No.	Material	L	D	S	EWL	W
M00-694-129-000	SN / CE	125.00	8.0	6.0	107.00	20.8

M5-STYLI WITH DIAMOND SPHERE

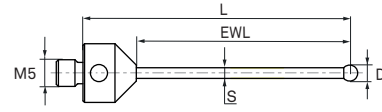
Stem: Tungsten Carbide



Part No.	Material	L	D	S	EWL	W
M00-694-194-000	DS / TC	30.00	3.0	2.0	20.00	-
M00-694-192-000	DS / TC	35.00	3.0	2.0	24.00	-
M00-694-193-000	DS / TC	50.00	3.0	2.0	40.00	-
M00-694-195-000	DS / TC	60.00	3.0	2.0	50.00	-

M5-STYLI WITH DIAMOND COATED SPHERE

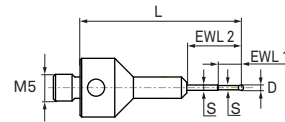
Stem: Tungsten Carbide



Part No.	Material	L	D	S	EWL	W
M00-694-187-000	DC / TC	35.00	3.0	2.0	25.00	-
M00-694-188-000	DC / TC	50.00	3.0	2.0	40.00	-
M00-694-189-000	DC / TC	80.00	5.0	3.5	70.00	-
M00-694-215-000	DC / TC	80.00	4.0	3.0	70.00	-

M5-STYLUS WITH DIAMOND COATED SPHERE

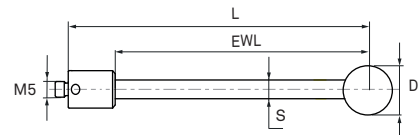
Stem: Tungsten Carbide (stepped)



Part No.	Material	L	D	S	EWL 1/2	W
M00-694-196-000	DC / TC	30.00	1.00	0.8 / 1	4.13 / 10.00	-

M5-STYLUS WITH CERAMIC BALL

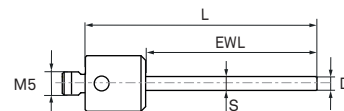
Stem: Ceramic



Part No.	Material	L	D	S	EWL	W
M00-694-186-000	CE / CE	90.00	15.0	6.0	72.00	28.6

M5-CYLINDER STYLUS

Stem: Tungsten Carbide

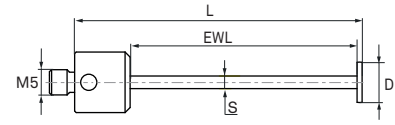


Part No.	Material	L	D	S	EWL	W
060-694.152-008	TC	50.00	3.0	3.0	37.00	15.1

M5-DISC STYLUS

Disc: Ruby

Stem: Tungsten Carbide

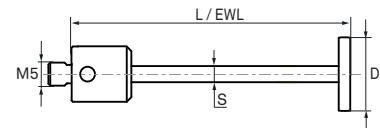


Part No.	Material	L	D	S	EWL	W
060-694.152-011	R / TC	57.00	8.0	2.5	45.00	12.8

M5-DISC STYLUS

Disc: Ceramic

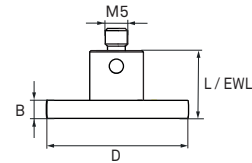
Stem: Tungsten Carbide



Part No.	Material	L	D	S	EWL	W
060-694.152-012	CE / TC	60.50	16.0	3.5	60.50	19.9

M5-DISC STYLUS

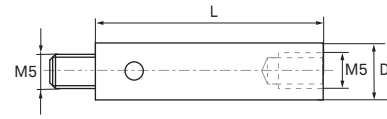
Disc: Ceramic



Part No.	Material	L	D	B	EWL	W
M00-694-152-014	CE / SS	15.20	35.0	4.0	15.20	25.0

M5-STYLUS EXTENSIONS

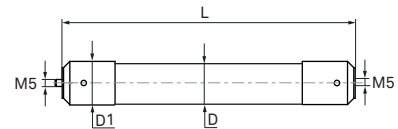
Material: Titanium



Part No.	Material	L	D	D1	W
060-694.036-000	TI	20.00	12.0	-	9.4
060-694.035-000	TI	40.00	12.0	-	18.5
060-813.034-000	TI	50.00	12.0	-	15.8
M00-1125-018-000	TI	60.00	12.0	-	30.0
060-813.033-000	TI	70.00	12.0	-	18.5
M00-1125-010-000	TI	80.00	12.0	-	41.0
060-813.032-000	TI	100.00	12.0	-	23.5
M00-1125-012-000	TI	120.00	12.0	-	61.0
M00-1125-013-000	TI	150.00	12.0	-	77.0
060-694.037-000	TI	20.00	18.0	-	21.8
M00-1125-014-000	TI	40.00	18.0	-	69.0
060-694.034-000	TI	60.00	18.0	-	35.6
060-694.033-000	TI	80.00	18.0	-	40.9
060-694.032-000	TI	100.00	18.0	-	46.3
060-694.031-000	TI	150.00	18.0	-	60.6
060-694.030-000	TI	200.00	18.0	-	73.3

M5-STYLUS EXTENSIONS

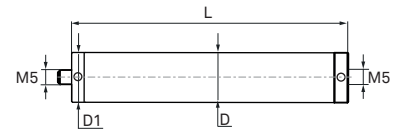
Stem: Carbon Fibre / End Pieces: Titanium or Stainless Steel



Part No.	Material	L	D	D1	W
M00-1125-019-000	CF / TI	40.00	12.0	14.0	14.0
M00-1125-023-000	CF / TI	50.00	12.0	14.0	14.0
M00-1125-017-000	CF / TI	60.00	12.0	14.0	15.0
M00-1125-015-000	CF / TI	80.00	12.0	14.0	16.0
M00-1125-016-000	CF / TI	100.00	12.0	14.0	34.0
M00-1125-004-000	CF / TI	120.00	12.0	14.0	18.0
M00-1125-011-000	CF / TI	150.00	12.0	14.0	20.0
M00-1125-021-000	CF / TI	180.00	12.0	14.0	21.0
M00-1125-020-000	CF / TI	200.00	12.0	14.0	22.0
M00-1125-022-000	CF / TI	250.00	12.0	14.0	24.0
M00-694-163-000	CF / SS	300.00	29.0	31.0	156.7
M00-694-164-000	CF / SS	400.00	29.0	31.0	184.9
M00-694-165-000	CF / SS	500.00	29.0	31.0	203.6
M00-694-168-000	CF / SS	800.00	29.0	31.0	438.0

M5-STYLUS EXTENSIONS

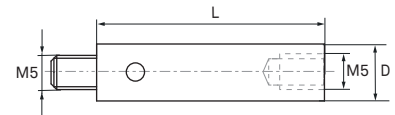
Stem: Carbon Fibre
End Pieces: Titanium



Part No.	Material	L	D	D1	W
M00-694-038-000	CF / TI	60.00	18.0	18.0	37.0
M00-694-040-000	CF / TI	80.00	18.0	18.0	40.2
M00-694-041-000	CF / TI	100.00	18.0	18.0	43.8
M00-694-042-000	CF / TI	200.00	18.0	18.0	60.3
M00-694-043-000	CF / TI	300.00	18.0	18.0	80.0

M5-STYLUS EXTENSION

Material: Dispal®



Part No.	Material	L	D	D1	W
M00-1125-024-000	DA	60.00	12.0	-	19.0

M5-CUBES

Material: Dispal®



Part No.	Material	L	B	C	W
060-694.016-000	DA	15.00	15.0	5 x M5	11.4
060-684.044-000	DA	20.00	20.0	5 x M5	19.1

M5-CUBE FOR HP-S-X3

Material: Dispal®



Part No.	Material	L	B	C	W
M00-114-101-000	DA	15.00	15.0	5 x M5	9.0

M5-DOUBLE CUBE

Material: Dispal®



Part No.	Material	L	B	C	W
M00-1126-009-000	DA	40.00	20.0	9 x M5	66.0

M5-STYLUS KNUCKLES

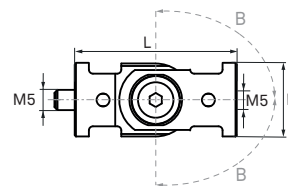
Material: Titanium



Part No.	Material	L	D	B	W
M00-1126-005-000	TI	30.00	12.0	± 90°	15.5
060-813.051-000	TI	34.00	12.0	± 90°	21.5
M00-1126-002-000	TI	51.00	12.0	180°/ 360°	26.0

M5-STYLUS KNUCKLE

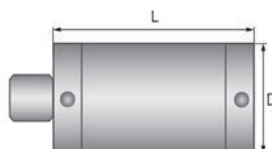
Material: Dispal®



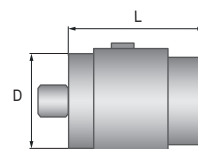
Part No.	Material	L	D	B	W
M00-694-010-000	DA	40.00	18.0	± 90°	26.5

M5-STYLUS ROTARY JOINTS

Material: Stainless Steel



060-813.055-000

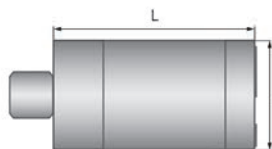


060-694.013-000

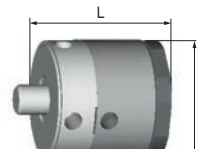
Part No.	Material	L	D	B	W
060-813.055-000	SS	27.00	14.0		26.0
060-694.013-000	SS	27.00	20.0		48.4

M5-STYLUS ROTARY JOINTS

Material: Titanium



M00-1126-003-000

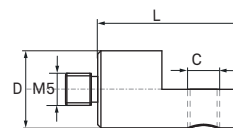


M00-114-102-000

Part No.	Material	L	D	B	W
M00-114-102-000	TI	20.00	20.0		28.2
M00-1126-003-000	TI	30.00	12.0		15.5

M5-STYLUS ANGLE 90°

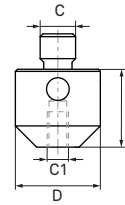
Material: Titanium



Part No.	Material	L	D	C	C1	W
M00-1126-004-000	TI	22.50	12.0	M5	-	9.0

M5/M2-STYLUS ADAPTER

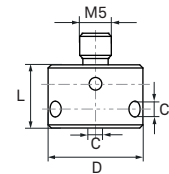
Material: Stainless Steel



Part No.	Material	L	D	C	C1	W
M00-1126-006-000	SS	11.00	12.0	M5	M2	9.0
M00-694-018-000	SS	11.00	12.0	M5	M3	-

M5-STYLUS STAR HOLDERS

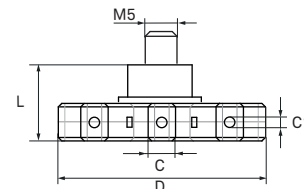
Material: Titanium



Part No.	Material	L	D	C	C1	W
060-694.060-000	TI	10.00	15.0	D2	4 x D2	8.1
M00-694-061-000	TI	12.00	15.0	M5	4 x D2	8.0
M00-694-090-000	TI	10.00	15.0	D2	3 x D2	8.3

M5-STYLUS STAR HOLDER

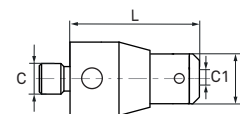
Material: Dispal®



Part No.	Material	L	D	C	C1	W
M00-694-091-000	DA	12.00	45.0	M5	8 x D2	20.7

M5-STYLUS HOLDER

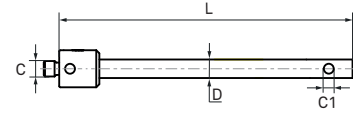
Material: Titanium



Part No.	Material	L	D	C	C1	W
M00-694-068-000	TI	21.00	8.0	M5	D2	8.2

M5-STYLUS HOLDER 90°

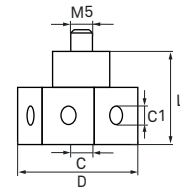
Material: Stainless Steel



Part No.	Material	L	D	C	C1	W
M00-694-069-000	SS	95.00	6.0	M5	D2	21.7

M5-STYLUS STAR HOLDERS

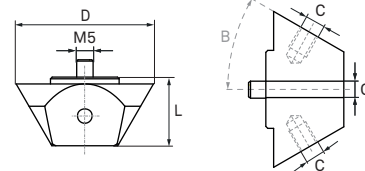
Material: Titanium



Part No.	Material	L	D	C	C1	W
M00-694-081-000	TI	21.00	32.0	M5	5 x M5	37.3
M00-694-083-000	TI	21.00	29.0	M5	7 x M5	34.2
M00-694-084-000	TI	21.00	43.4	M5	8xD2 / 8xM5	78.8
M00-694-082-000	TI	21.00	44.0	M5	6xD2 / 6xM5	77.4
M00-694-085-000	TI	17.00	87.6	M5	8 x D2	142.7

M5-STYLUS HOLDERS 15° - 75°

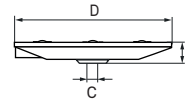
Material: Dispal® or Titanium



Part No.	Material	L	D	B	C	W
M00-694-102-000	DA	22.00	35.0	15°	5 x M5	46.1
M00-694-098-000	DA	20.00	40.0	30°	5 x M5	43.2
M00-694-097-000	DA	25.00	50.0	30°	7 x M5	77.4
M00-694-106-000	DA	19.00	47.5	45°	5 x M5	53.7
M00-694-099-000	DA	19.00	47.5	45°	5 x M5	55.2
M00-694-104-000	DA	20.00	50.0	45°	7 x M5	57.2
M00-694-100-000	DA	19.00	52.5	60°	5 x M5	72.5
M00-694-096-000	DA	18.00	56.0	60°	7 x M5	76.6
M00-694-103-000	DA	18.00	65.0	75°	7 x M5	117.6
M00-694-086-000	TI	20.00	42.0	30°	9 x M5	58.2

HP-S-X3 STYLUS CLAMPING

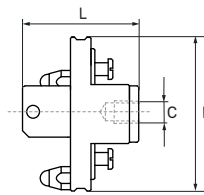
Material: Aluminium



Part No.	Material	L	D	C	W
M00-114-100-000	AL	12.50	53.0	M5	40.2

HP-S-X5/LSP-S2/S4 STYLUS CLAMPING

Material: Aluminium



Part No.	Material	L	D	C	W
M00-813-101-000	AL	15.00	60.0	M5	126.2

MTK 1 STYLUS CLAMPING

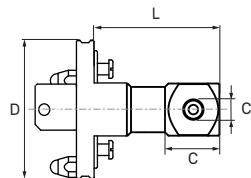
Material: Aluminium



Part No.	Material	L	D	C	W
060-684.026-000	AL	33.00	62.0	M5	148.0

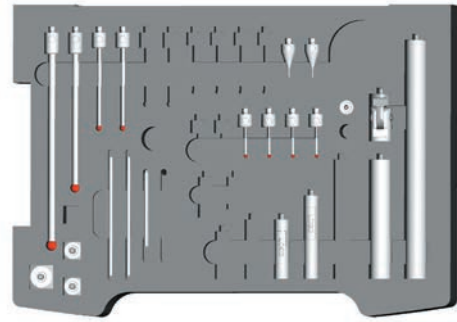
HP-S-X5/LSP-S2/S4 STYLUS CLAMPINGS WITH CUBE

Clamping Material: Aluminium



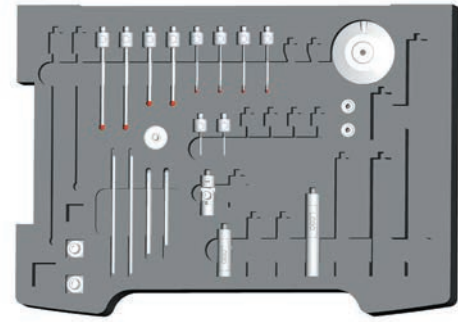
Part No.	Material	L	D	C	C1	W
M00-813-117-000	AL / DA	118.50	60.0	23.0 x 23.0	5 x M5	246.0
M00-813-119-000	AL / AL	60.00	60.0	23.0 x 23.0	5 x M5	155.9
M00-813-111-000	AL / TI	60.00	60.0	23.0 x 23.0	5 x M5	226.8

M5-STYLUS KIT STANDARD



Part No.	Item Description	Contents	QTY
M00-694-006-000	M5-Stylus Kit Standard		
	M5-Stylus (R-1.5-TC-1-L28)	M00-694-150-016	2
	M5-Stylus (R-3-TC-2-L35)	060-694.050-000	4
	M5-Stylus (R-5-TC-3.5-L80)	060-694.054-000	2
	M5-Stylus (R-8-TC-6-L130)	M00-694-138-000	1
	M5-Stylus (R-8-TC-6-L176)	060-694.150-014	1
	M5-Stylus Extension (TI-12-L20)	060-694.036-000	1
	M5-Stylus Extension (TI-12-L50)	060-813.034-000	1
	M5-Stylus Extension (TI-12-L70)	060-813.033-000	1
	M5-Stylus Extension (TI-18-L100)	060-694.032-000	1
	M5-Stylus Extension (TI-18-L200)	060-694.030-000	1
	M5-Cube 15x15 (DA)	060-694.016-000	2
	M5-Cube 20x20 (DA)	060-684.044-000	1
	M5-Stylus Knuckle DEG 180 (DA-18-L40)	M00-694-010-000	1
	Mounting Pin (SV-3-L100)	060-694.021-011	2
	Hexagon Socket Screw Key AF3 mm	M02-B04-703-100	1
	Storage Box		1

M5-STYLUS KIT FOR HP-S-X3C SENSOR



Part No.	Item Description	Contents	QTY
M00-694-007-000	M5-Stylus Kit for HP-S-X3C Sensor		
	HP-S-X3 Stylus Clamping (1x M5)	M00-114-100-000	1
	M5-Stylus (R-2-TC-1.5-L30)	060-694.150-007	2
	M5-Stylus (R-3-TC-2-L50)	060-694.051-000	4
	M5-Stylus (R-5-TC-3.5-L60)	060-694.053-000	2
	M5-Stylus (R-5-TC-3.5-L80)	060-694.054-000	2
	M5-Stylus Extension (TI-12-L20)	060-694.036-000	2
	M5-Stylus Extension (TI-12-L40)	060-694.035-000	1
	M5-Stylus Extension (TI-12-L70)	060-813.033-000	1
	M5-Rotary Joint (TI-20-L20)	M00-114-102-000	1
	M5-Stylus Knuckle DEG 180 (TI-12-L34)	060-813.051-000	1
	M5-Cube 15x15 (DA) for HP-S-X3	M00-114-101-000	2
	Mounting Pin (SV-3-L100)	060-694.021-011	2
	Hexagon Socket Screw Key AF3 mm	M02-B04-703-100	1
	Hexagon Socket Screw Key AF4 mm	M02-B04-703-101	1
	Storage Box		1



Part No.	Item Description
060-694.021-011	Mounting Pin (SV-3-L100)



Part No.	Item Description
M00-114-006-130	Mounting Key AF4.1/3.6 mm (SS-L30)



Part No.	Item Description
M02-B04-000-041	Torque Screwdriver 0.5 NM with Hexagon AF2.5 mm



Part No.	Item Description
M02-B04-703-100	Hexagon Socket Screw Key AF3 mm



Part No.	Item Description
M02-B04-703-101	Hexagon Socket Screw Key AF4 mm



Part No.	Item Description
M02-B04-703-097	Hexagon Socket Screw Key AF1.5 mm



Part No.	Item Description
M00-114-006-140	Mounting Pin



Part No.	Item Description
M02-B04-000-035	Hexagon screw driver AF1.5 mm

CROSS REFERENCE NUMBERS
SCANNING STYLI AND ACCESSORIES

ITP Part No.	Hexagon Part No.	Item Description
DG M5 000 11 051	M00-1126-002-000	M5-Stylus Knuckle DEG 180/360 (TI-12-L51)
DS M5 000 14 027	060-813.055-000	M5-Rotary Joint (SS-14-L27)
DT M5 000 11 029	M00-1126-003-000	M5-Rotary Joint (TI-12-L30)
DT M5 000 18 030	060-694.013-000	M5-Rotary Joint (SS-20-L27)
FH M5 015 11 044	M00-1121-041-000	M5-Stylus - Steped (R-1.5-TC-1/4-L43.25)
FH M5 020 11 058	M00-1121-042-000	M5-Stylus - Steped (R-2-TC-1.5/4-L57)
FH M5 020 12 066	060-694.150-006	M5-Stylus - Stepedt (R-2-TC-1.5/4-L66)
GT M5 000 11 030	M00-1126-005-000	M5-Stylus Knuckle DEG 0-90 (TI-12-L30)
GT M5 000 12 034	060-813.051-000	M5-Stylus Knuckle DEG 180 (TI-12-L34)
GT M5 000 18 040	M00-694-010-000	M5-Stylus Knuckle DEG 180 (DA-18-L40)
KH M5 000 11 022	M00-1126-004-000	M5-Stylus Angle DEG 90DEG 90 (TI-12-L22.5)
KH M5 000 12 021	M00-694-068-000	M5-Stylus Holde (1x D2)
KH M5 080 12 056	060-694.152-011	M5-Disc Stylus (R-8-TC-2.5-L57)
KH M5 160 12 057	060-694.152-012	M5-Disc Stylus (CE-16-TC-3.5-L60.5)
KH M5 L06 13 021	M00-694-082-000	M5-Taststift Star Holder (6x D2 / 6x M5 / 1x M5)
KH M5 L07 13 021	M00-694-083-000	M5-Stylus Star Holder r (7x M5 M5)
KH M5 L08 13 021	M00-694-084-000	M5-Stylus Star Holder (8x M5/ 8x D2/ 1x M5)
KT M5 003 02 022	M00-694-067-005	D2-Stylus - Tapered (R-0.3-TC-0.2/2-L22)
KT M5 005 02 022	M00-694-064-005	D2-Stylus - Tapered (R-0.5-TC-0.3/2-L22)
KT M5 008 02 022	M00-694-063-005	D2-Stylus - Tapered (R-0.8-TC-0.6/2-L22)
KT M5 010 02 022	M00-694-062-005	D2-Stylus - Tapered (R-1-TC-0.8/2-L22)
KT M5 015 02 022	060-694.066-000	D2-Stylus - Stepped (R-1.5-TC-1.2/2-L22)
KT M5 020 02 022	060-694.065-000	D2-Stylus - Stepped (R-2-TC-1.5/2-L22)
NH M5 005 11 022	M00-1121-058-000	D2-Stylus - Stepped (R-0.5-TC-0.3/1-L21.75)
Q TH M5 S30 11 100	M00-1121-019-000	M5-Stylus (SN-3-TC-2-L98.5)
Q TH M5 S40 11 080	M00-1121-022-000	M5-Stylus (SN-4-TC-2.5-L78)
RI M3 000 04 005	M00-1126-011-000	M3/M2-Stylus Adapter (SS-4-L5)
RT M5 200 11 010	M00-1126-006-000	M5/M2-Stylus Adapter (SS-12-L11)
SHI M3 090 06 032	M00-1126-001-000	M3-Cube with extension (SS-9X9-L32.5)
STH M3 020 04 041	M00-1121-026-000	M3-Stylus - Stepped (R-2-TC-1/2-L39.5)
S TH M5 010 11 015	M00-1121-011-000	M5-Stylus (R-1-TC-0.8-L14.5)
STH M5 030 11 100	M00-1121-017-000	M5-Stylus (R-3-TC-2-L98.5)
STH M5 S40 11 120	M00-1121-013-000	M5-Stylus (SN-4-TC-3-L118)

ITP Part No.	Hexagon Part No.	Item Description
TH M3 050 04 052	M00-694-221-000	M3-Stylus (R-5-SS-3-L50)
TH M5 005 10 030	M00-1121-055-000	M5-Stylus - Stepped (R-0.5-TC-0.4/0.7-L30)
TH M5 007 10 030	M00-1121-056-000	M5-Stylus (R-0.7-TC-0.5-L30)
TH M5 010 11 030	M00-1121-045-000	M5-Stylus - Stepped (R-1-TC-0.8/1.0-L29.5)
TH M5 015 11 030	M00-1121-043-000	M5-Stylus - Stepped (R-1.5-TC-1/1.5-L29.25)
TH M5 015 12 028	M00-694-150-016	M5-Stylus (R-1.5-TC-1-L28)
TH M5 020 11 030	M00-1121-046-000	M5-Stylus (R-2-TC-1.5-L29)
TH M5 020 11 040	M00-1121-047-000	M5-Stylus (R-2-TC-1.5-L39)
TH M5 020 12 030	060-694.150-007	M5-Stylus (R-2-TC-1.5-L30)
TH M5 020 12 041	060-694.150-013	M5-Stylus (R-2-TC-1.5-L41)
TH M5 030 11 025	M00-1121-048-000	M5-Stylus (R-3-TC-2-L23.5)
TH M5 030 11 033	M00-1121-049-000	M5-Stylus (R-3-TC-2-L32)
TH M5 030 11 050	M00-1121-050-000	M5-Stylus (R-3-TC-2-L48.5)
TH M5 030 11 058	M00-1121-051-000	M5-Stylus (R-3-TC-2-L56.5)
TH M5 030 12 035	060-694.050-000	M5-Stylus (R-3-TC-2-L35)
TH M5 030 12 050	060-694.051-000	M5-Stylus (R-3-TC-2-L50)
TH M5 035 11 100	M00-1121-044-000	M5-Stylus (R-3.5-TC-2.5-L98.25)
TH M5 040 11 064	M00-1121-052-000	M5-Stylus (R-4-TC-2-L62)
TH M5 040 12 055	M00-694-150-017	M5-Stylus (R-4-TC-2.5-L55)
TH M5 040 12 080	M00-694-150-018	M5-Stylus (R-4-TC-2.5-L80)
TH M5 050 11 075	M00-1121-053-000	M5-Stylus (R-5-TC-3.5-L72.5)
TH M5 050 11 100	M00-1121-054-000	M5-Stylus (R-5-TC-3.5-L97.5)
TH M5 050 12 060	060-694.053-000	M5-Stylus (R-5-TC-3.5-L60)
TH M5 050 12 080	060-694.054-000	M5-Stylus (R-5-TC-3.5-L80)
TH M5 080 12 090	060-694.056-000	M5-Stylus (R-8-TC-6-L90)
TH M5 080 12 176	060-694.150-014	M5-Stylus (R-8-TC-6-L176)
TH M5 S10 11 020	M00-1121-010-000	M5-Stylus - Stepped (SN-1-TC-0.8/1-L19)
TH M5 S10 11 030	M00-1121-036-000	M5-Stylus (SN-1-TC-0.8/1-L29.5)
TH M5 S15 12 028	M00-694-131-000	M5-Stylus (SN-1.5-TC-1-L28)
TH M5 S20 11 040	M00-1121-024-000	M5-Stylus (SN-2-TC-1.5-L39)
TH M5 S20 12 030	M00-694-126-000	M5-Stylus (SN-2-TC-1.5-L30)
TH M5 S30 11 033	M00-1121-029-000	M5-Stylus (SN-3-TC-2-L32)
TH M5 S30 11 035	M00-1121-023-000	M5-Stylus (SN-3-TC-2-L33.5)

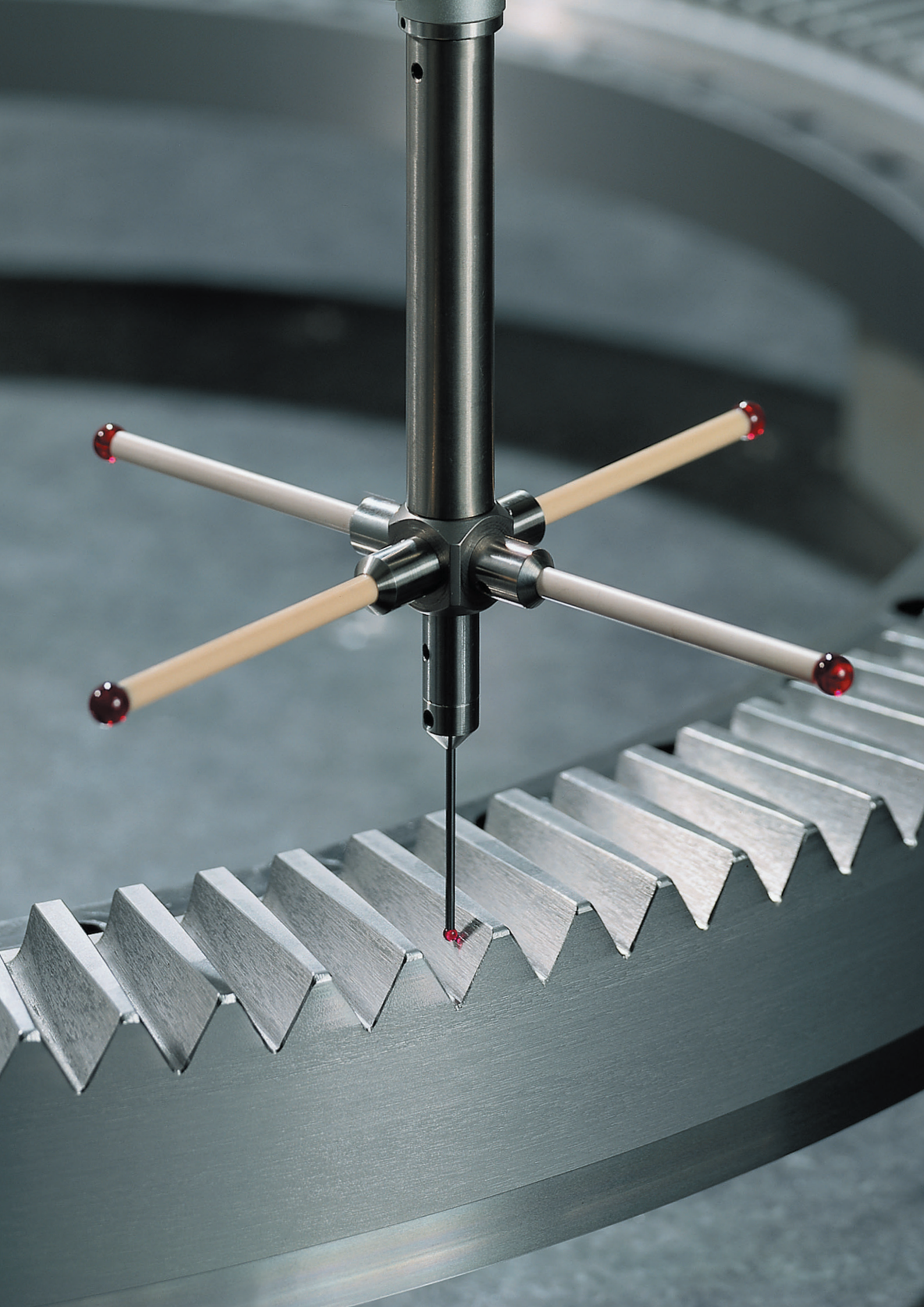
CROSS REFERENCE NUMBERS

SCANNING STYLI AND ACCESSORIES

ITP Part No.	Hexagon Part No.	Item Description
TH M5 S30 11 050	M00-1121-035-000	M5-Stylus (SN-3-TC-2-L48.5)
TH M5 S30 11 058	M00-1121-025-000	M5-Stylus (SN-3-TC-2-L56.5)
TH M5 S30 12 050	M00-694-121-000	M5-Stylus (SN-3-TC-2-L50)
TH M5 S40 11 064	M00-1121-027-000	M5-Stylus (SN-4-TC-2-L62)
TH M5 S40 12 055	M00-694-132-000	M5-Stylus (SN-4-TC-2.5-L55)
TH M5 S40 12 080	M00-694-133-000	M5-Stylus (SN-4-TC-2.5-L80)
TH M5 S50 11 075	M00-1121-028-000	M5-Stylus (SN-5-TC-3.5-L72.5)
TH M5 S50 11 100	M00-1121-001-000	M5-Stylus (SN-5-TC-3.5-L97.5)
TH M5 S50 12 060	M00-694-122-000	M5-Stylus (SN-5-TC-3.5-L60)
TH M5 S50 12 080	M00-694-123-000	M5-Stylus (SN-5-TC-3.5-L80)
TH M5 S80 12 125	M00-694-125-000	M5-Stylus (SN-8-TC-6-L125)
TK M5 080 12 125	060-813.041-000	M5-Stylus (R-8-CE-6-L125)
TK M5 150 12 090	M00-694-186-000	M5-Stylus (CE-15-CE-6-L90)
VA M5 000 11 060	M00-1125-024-000	M5-Stylus Extension (DA-12-L60)
VC M3 000 05 050	M00-694-245-000	M3-Stylus Extension (CF-5-DA-5.5-L50)
VC M3 000 05 150	M00-694-248-000	M3-Stylus Extension (CF-5-DA-5.5-L150)
VC M5 TZ0 11 040	M00-1125-019-000	M5-Stylus Extension (CF-12-TI-14-L40)
VC M5 TZ0 11 050	M00-1125-023-000	M5-Stylus Extension (CF-12-TI-14-L50)
VC M5 TZ0 11 060	M00-1125-017-000	M5-Stylus Extension (CF-12-TI-14-L60)
VC M5 TZ0 11 080	M00-1125-015-000	M5-Stylus Extension (CF-12-TI-14-L80)
VC M5 TZ0 11 100	M00-1125-016-000	M5-Stylus Extension (CF-12-TI-14-L100)
VC M5 TZ0 11 120	M00-1125-004-000	M5-Stylus Extension (CF-12-TI-14-L120)
VC M5 TZ0 11 150	M00-1125-011-000	M5-Stylus Extension (CF-12-TI-14-L150)
VC M5 TZ0 11 180	M00-1125-020-000	M5-Stylus Extension (CF-12-TI-14-L180)
VC M5 TZ0 11 200	M00-1125-021-000	M5-Stylus Extension (CF-12-TI-14-L200)
VC M5 TZ0 11 250	M00-1125-022-000	M5-Stylus Extension (CF-12-TI-14-L250)
VC M5 TZ0 20 060	M00-694-038-000	M5-Stylus Extension (CF-18-TI-18-L60)
VC M5 TZ0 20 100	M00-694-041-000	M5-Stylus Extension (CF-18-TI-18-L100)
VC M5 TZ0 20 200	M00-694-042-000	M5-Stylus Extension (CF-18-TI-18-L200)
VC M5 TZ0 20 300	M00-694-043-000	M5-Stylus Extension (CF-18-TI-18-L300)
VC M5 TZ0 20 400	M00-694-164-000	M5-Stylus Extension (CF-29-SS-31-L400)
VC M5 TZ0 20 500	M00-694-165-000	M5-Stylus Extension (CF-29-SS-31-L500)

ITP Part No.	Hexagon Part No.	Item Description
VT M5 000 11 060	M00-1125-018-000	M5-Stylus Extension (TI-12-L60)
VT M5 000 11 080	M00-1125-010-000	M5-Stylus Extension (TI-12-L80)
VT M5 000 11 120	M00-1125-012-000	M5-Stylus Extension (TI-12-L120)
VT M5 000 11 150	M00-1125-013-000	M5-Stylus Extension (TI-12-L150)
VT M5 000 12 020	060-694.036-000	M5-Stylus Extension (TI-12-L20)
VT M5 000 12 040	060-694.035-000	M5-Stylus Extension (TI-12-L40)
VT M5 000 12 050	060-813.034-000	M5-Stylus Extension (TI-12-L50)
VT M5 000 12 070	060-813.033-000	M5-Stylus Extension (TI-12-L70)
VT M5 000 12 100	060-813.032-000	M5-Stylus Extension (TI-12-L100)
VT M5 000 18 020	060-694.037-000	M5-Stylus Extension (TI-18-L20)
VT M5 000 18 040	M00-1125-014-000	M5-Stylus Extension (TI-18-L40)
VT M5 000 18 060	060-694.034-000	M5-Stylus Extension (TI-18-L60)
VT M5 000 18 080	060-694.033-000	M5-Stylus Extension (TI-18-L80)
VT M5 000 18 100	060-694.032-000	M5-Stylus Extension (TI-18-L100)
VT M5 000 18 150	060-694.031-000	M5-Stylus Extension (TI-18-L150)
VT M5 000 18 200	060-694.030-000	M5-Stylus Extension (TI-18-L200)
WA M5 000 15 000	M00-114-101-000	M5-Cube 15x15 (DA) for HP-S-X3
WT M3 000 05 013	M00-694-243-000	M3-Cube 13x13 mm (5x M3) (DA)
WT M5 000 20 040	M00-1126-009-000	M5-Double Cube 20X20 (DA-L40)
WT M5 L00 15 000	060-694.016-000	M5-Cube 15x15 (DA)
WT M5 L00 20 000	060-684.044-000	M5-Cube 20x20 (DA)

Renishaw Part No.	Hexagon Part No.	Item Description
A-5003-0069	M00-1121-020-000	M3-Stylus (R-5-CE-2.5-L50)
A-5003-4686	M00-1125-002-000	M3-Rotary Stylus Knuckle (SS-L17)
A-5003-4862	M00-694-241-000	M3-Stylus (R-8-CF-5-L75)
A-5003-4863	M00-694-231-000	M3-Stylus (R-8-CF-5-L100)
A-5003-5204	M00-1121-002-000	M5-Stylus (R-1-TC-0.7-L20)
A-5003-5208	M00-1121-003-000	M5-Stylus (R-3-TC-2-L20)
A-5003-5216	060-694.150-007	M5-Stylus (R-2-TC-1.5-L30)
A-5003-5218	M00-1121-004-000	M5-Stylus (R-3-TC-2-L30)
A-5003-5221	M02-J01-100-001	M5-Stylus (R-1.5-TC-1-L40)
A-5003-5234	060-694.051-000	M5-Stylus (R-3-TC-2-L50)
A-5003-5249	060-694.054-000	M5-Stylus (R-5-TC-3.5-L80)
A-5003-5278	060-813.051-000	M5-Stylus Knuckle DEG 0-90 (TI-12-L34)
A-5004-7596	M00-1126-012-000	M4/M3-Stylus Adapter (SS-4.5-L20)
A-5555-0189	060-694.016-000	M5-Cube 15x15 (DA)
A-5555-0190	060-684.044-000	M5-Cube 20x20 (DA)
A-5555-0226	M00-1126-006-000	M5/M2-Stylus Adapter (SS-12-L11)
A-5555-0227	M00-694-018-000	M5/M3-Stylus Adapter (SS-12-L11)
A-5555-0425	M00-1125-004-000	M5-Stylus Extension (CF-12-TI-14-L120)
A-5555-0658	M00-694-038-000	M5-Stylus Extension (CF-18-TI-18-L60)
A-5555-0661	M00-694-041-000	M5-Stylus Extension (CF-18-TI-18-L100)
A-5555-0663	M00-694-042-000	M5-Stylus Extension (CF-18-TI-18-L200)
A-5555-0664	M00-694-043-000	M5-Stylus Extension (CF-18-TI-18-L300)
A-5555-0665	M00-694-164-000	M5-Stylus Extension (CF-29-SS-31-L400)
A-5555-0667	M00-694-165-000	M5-Stylus Extension (CF-29-SS-31-L500)





Hexagon Manufacturing Intelligence helps industrial manufacturers develop the disruptive technologies of today and the life-changing products of tomorrow. As a leading metrology and manufacturing solution specialist, our expertise in sensing, thinking and acting – the collection, analysis and active use of measurement data – gives our customers the confidence to increase production speed and accelerate productivity while enhancing product quality.

Through a network of local service centres, production facilities and commercial operations across five continents, we are shaping smart change in manufacturing to build a world where quality drives productivity. For more information, visit HexagonMI.com.

Hexagon Manufacturing Intelligence is part of Hexagon (Nasdaq Stockholm: HEXA B; hexagon.com), a leading global provider of information technologies that drive quality and productivity across geospatial and industrial enterprise applications.

-  COORDINATE MEASURING MACHINES
-  3D LASER SCANNING
-  SENSORS
-  PORTABLE MEASURING ARMS
-  SERVICES
-  LASER TRACKERS & STATIONS
-  MULTISENSOR & OPTICAL SYSTEMS
-  WHITE LIGHT SCANNERS
-  METROLOGY SOFTWARE SOLUTIONS
-  CAD / CAM
-  STATISTICAL PROCESS CONTROL
-  AUTOMATED APPLICATIONS
-  MICROMETERS, CALIPERS AND GAUGES
-  DESIGN AND COSTING SOFTWARE