



WEDGE-ACTION FIXTURES

WEDGE-ACTION FIXTURES

Wedge fixtures are self-tightening. Starrett offers a variety of different wedge-action fixtures with various face types for flat and round sample dimensions.

Wedge-action fixtures can be equipped with smooth, serrated, v-notch, diamond-coated and rubber surfaces.

Starrett can assist you in selecting the proper wedge-action fixture and jaw face set for your sample.

OPERATION

Wedge-action test fixtures are designed for easy sample loading and alignment. These test fixtures apply an increasing pressure on the sample as the sample is pulled axially.

Starrett offers a variety of wedge-action test fixtures with different capacities. We also offer a wide assortment of grip faces including smooth, serrated, v-notch, diamond and rubber.

TESTING STANDARDS

There are a variety of testing standards that can make use of a wedge-action test fixture. Contact your Starrett representative for more information about your specific testing method and the available test fixtures.

Wedge-Action Fixtures						
Model No.	Load Capacity			Sample Width	Sample Thickness	Type
	N	KGF	LBF			
WEDGE-7S-1	5,000	500	1,100	10 mm	8 mm	Clevis
WEDGE-256S-1	10K	1,000	2,200	30 mm	8 mm	Clevis
WEDGE-243S-1	20K	2,000	4,400	Jaw Dependent	Jaw Dependent	Clevis
WEDGE-243S-50	50K	5,000	11,000	Jaw Dependent	Jaw Dependent	Clevis
WEDGE-527S-1	50K	5,000	11,000	80 mm	Jaw Dependent	Clevis



WEDGE-ACTION FIXTURES

Wedge-action fixtures are ideal for production applications where fast and precise sampling loading is required. These fixtures help ensure proper sample alignment. As the applied load increases, the gripping force on the sample increases.

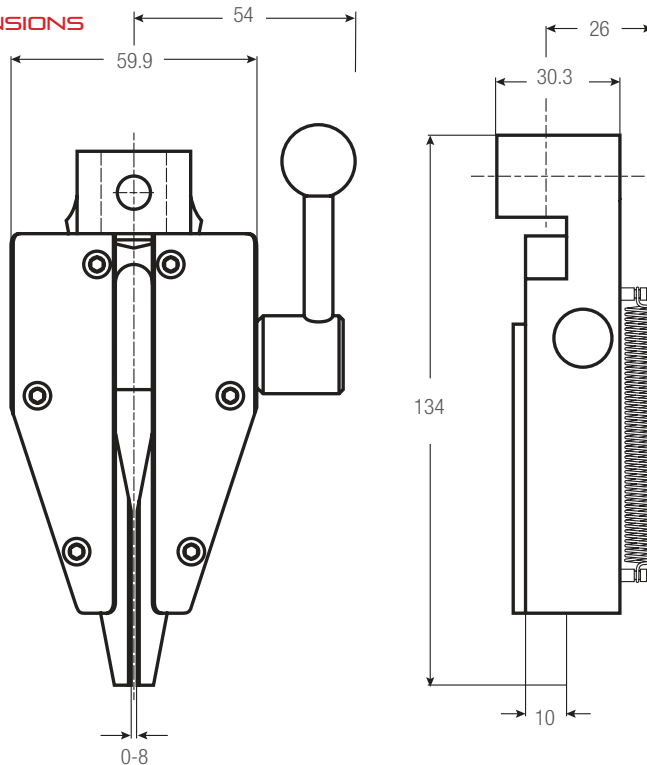
Some wedge-action grips can be equipped with various types of jaw faces making them ideal for flat or round samples. Jaw face sets include four jaw faces and are ordered separately unless otherwise noted.

7

STEEL, NICKEL FINISH

- For general-purpose tensile testing applications
- For small diameter samples
- Has closed back
- Jaw faces must be ordered separately
- Operating Temperatures 32° to 266°F (0° to 130°C)

DIMENSIONS



Wedge-Action Fixtures													
Model No.	Load Capacity			Base Plate	Jaw Face	Sample Width (Max)		Sample Thickness (Max)		Weight (each)		Clevis Type	Supply
	N	KGF	LBF			in	mm	in	mm	lbs	kgs		
WEDGE-7S-1	5,000	500	1,100	Aluminum	No Jaws	0.39	10	0.31	8	1.98	0.9	15.9	2

7 JAW SETS

STEEL, HARDENED

- Supplied four (4) jaws per set
- Operating Temperatures 32° to 266°F (0° to 130°C)

Jaw Sets					
Model No.	Jaw Face	Jaw Opening (Max)		Clamping Surface	
		in	mm	in	mm
JAW7-PY	Serrated	0.3	8	0.4 x 1.6	10 x 40
JAW7-V2	V-Notch	0.08-0.4	2-10	0.4 x 1.6	10 x 40

SERRATED JAW

- Pyramids 1.2 x 45°
- Hardened steel 58HRC
- Nickel-plated



V-NOTCH JAW

- For round samples
- 0.8mm tooth pitch
- Hardened steel 58HRC
- Nickel-plated



WEDGE-ACTION FIXTURES

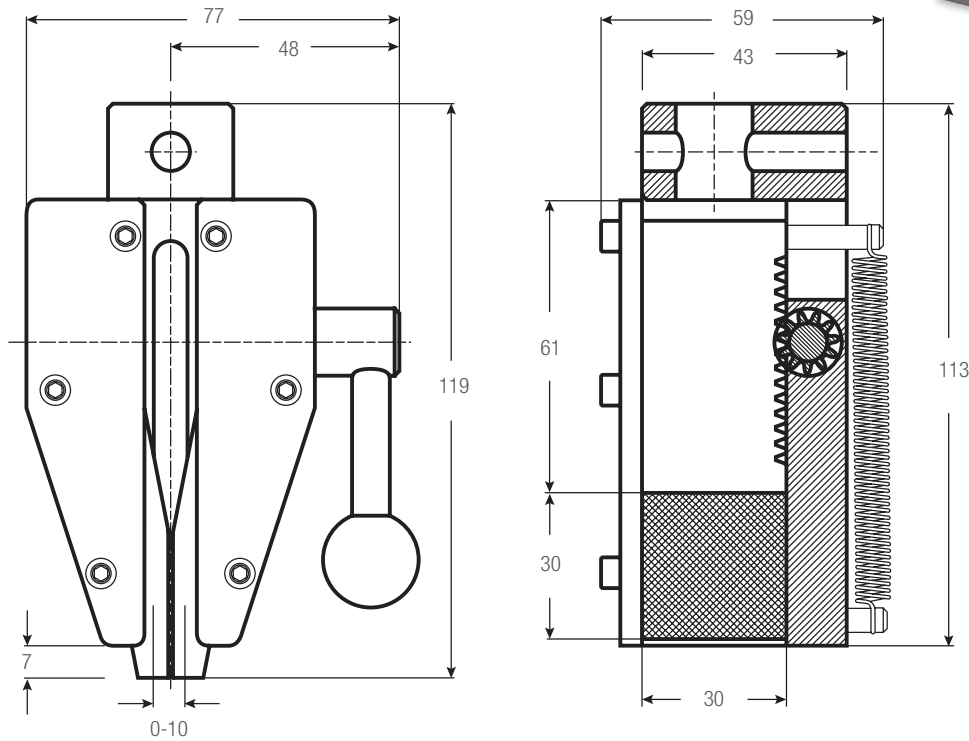
256

STEEL, PHOSPHATE FINISH

- For general-purpose tensile testing applications
- Has a closed back so sample is loaded from front side only
- Spring-loaded, lever operation
- Jaw faces must be ordered separately
- Operating Temperatures 32° to 266°F (0° to 130°C)



DIMENSIONS



Wedge-Action Fixtures

Model No.	Load Capacity			Base Plate	Jaw Face	Sample Width (Max)		Sample Thickness (Max)		Weight (each)		Clevis Type	Supply
	N	KGf	LBF			in	mm	in	mm	lbs	kgs		
WEDGE-256S-1	10K	1,000	2,200	Aluminum	No Jaws	1.2	30	0.31	8	3.1	1.4	15.9	2

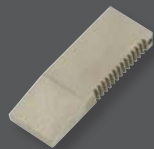
256 JAW SETS

STEEL, HARDENED

- Supplied four (4) jaws per set
- Operating Temperatures 32° to 266°F (0° to 130°C)

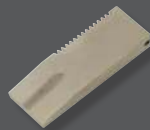
Jaw Sets

Model No.	Jaw Face	Jaw Opening (Max)		Clamping Surface	
		in	mm	in	mm
JAW256-PY	Serrated	0.4	10	1.2 x 1.2	30 x 30
JAW256-V2	V-Notch	0.08-0.4 ϕ	2-10 ϕ	1.2 x 1.2	30 x 30
JAW256-D30	Diamond	0.4	10	1.2 x 1.2	30 x 30



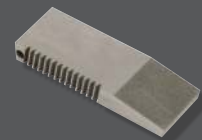
SERRATED JAW

- Pyramids 1.2 x 45°
- Hardened steel 58HRC
- Nickel-plated



V-NOTCH JAW

- For round samples
- 1.2mm tooth pitch
- Hardened steel 58HRC
- Nickel-plated



DIAMOND JAW

- Hardened steel 58HRC
- Nickel-plated

WEDGE-ACTION FIXTURES

243

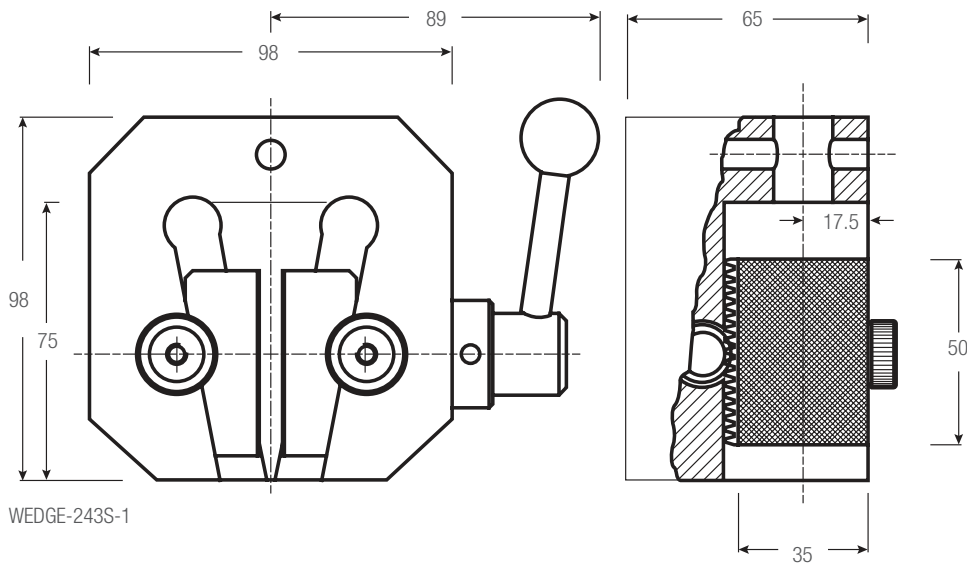
STEEL, PHOSPHATE FINISH

- For general-purpose tensile testing applications
- Has a closed back so sample is loaded from front side only
- Spring-loaded, lever operation
- Jaw faces must be ordered separately
- Operating Temperatures 32° to 266°F (0° to 130°C)



Wedge-Action Fixtures												
Model No.	Load Capacity			Jaw Face	Sample Width (Max)		Sample Thickness (Max)		Weight (each)		Clevis Type	Supply
	N	KGF	LBF		in	mm	in	mm	lbs	kgs		
WEDGE-243S-1	20K	2,000	4,400	No Jaws	Jaw Dependent		Jaw Dependent		8.4	3.8	15.9	2
WEDGE-243S-50	50K	5,000	11,000	No Jaws	Jaw Dependent		Jaw Dependent		15.0	6.8	31.8	2

DIMENSIONS



WEDGE-243S-1

243 JAW SETS

STEEL, HARDENED

- Supplied four (4) jaws per set
- Operating Temperatures 32° to 266°F (0° to 130°C)

Jaw Sets					
Model No.	Jaw Face	Jaw Opening (Max)		Clamping Surface	
		in	mm	in	mm
JAW243-PY13	Serrated	0.5	13	1.97 x 1.4	50 x 35
JAW243-PY16	Serrated	0.6	16	1.97 x 1.4	50 x 35
JAW243-V3	V-Notch	0.01-0.5 ϕ	3-13 ϕ	1.97 height	50mm height
JAW243-V4	V-Notch	0.15-0.6 ϕ	4-16	1.97 height	50mm height
JAW243-V10	V-Notch	0.39-0.8 ϕ	10-20	1.97 height	50mm height

SERRATED JAW

- Pyramids 1.2 x 45°
- Hardened steel 58HRC
- Nickel-plated



V-NOTCH JAW

- For round samples
- 1.2mm tooth pitch
- Hardened steel 58HRC
- Nickel-plated

WEDGE-ACTION FIXTURES

527

STEEL, PHOSPHATE FINISH

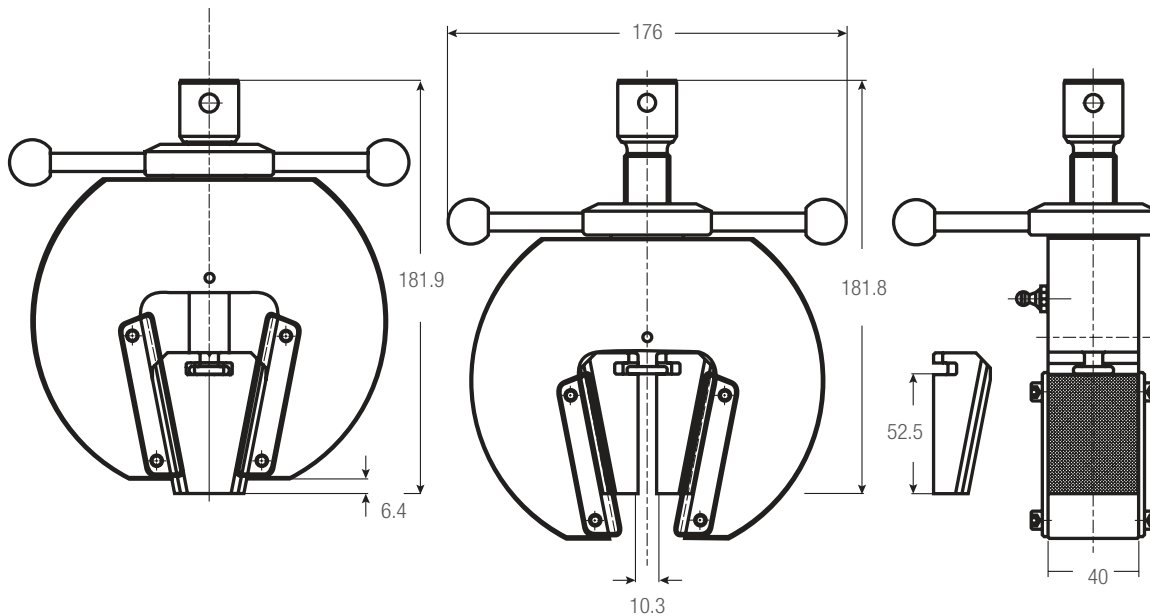
- For general-purpose tensile testing applications
- Capstan tightening
- Jaw faces must be ordered separately
- Operating Temperatures 32° to 266°F (0° to 130°C)



Wedge-Action Fixtures

Model No.	Load Capacity			Sample Height (Max)		Sample Width (Max)		Sample Thickness (Max)		Weight (each)		Clevis Type	Supply
	N	KGF	LBF	in	mm	in	mm	in	mm	lbs	kgs		
WEDGE-5275-1	50K	5,000	11,000	283	11.1	3.1	80	Jaw Dependent	17	37.5	31.8	31.8	2

DIMENSIONS



527 JAW SETS

STEEL, HARDENED

- Supplied four (4) jaws per set
- Operating Temperatures 32° to 266°F (0° to 130°C)

Jaw Sets

Model No.	Jaw Face	Jaw Opening (Max)		Clamping Surface	
		in	mm	in	mm
JAW527-PY30	Serrated	0.4	10	2.6 x 3.2	66 x 80
JAW527-V17	V-notch	0.15-0.7 ϕ	4-17 ϕ	2.6 x 3.2	66 x 80
JAW527-V30	V-notch	0.6-1.2 ϕ	16-30 ϕ	2.6 x 3.2	66 x 80

SERRATED JAW

- Pyramids 1.2 x 45°
- Hardened steel 58HRC
- Nickel-plated

V-NOTCH JAW

- For round samples
- 1.2mm tooth pitch
- Hardened steel 58HRC
- Nickel-plated