



WISE-ACTION FIXTURES

VISE-ACTION FIXTURES

Starrett vise-action test fixtures tighten manually. Starrett offers a variety of different vise-action fixtures with various clamping surfaces and jaw openings.

Vise-action fixtures can be supplied with smooth, serrated diamond and rubber surfaces.

Starrett can assist you in selecting the proper vise-action fixture for your sample.

OPERATION

Vise-action test fixtures are designed for easy sample loading and alignment. Using a screw mechanism on the test fixture, you apply force against the sample being tested in order to secure the sample in place.

Starrett offers a variety of vise-action test fixtures with different capacities. We also offer a wide assortment of grip faces including smooth, serrated, v-notch, diamond and rubber.

TESTING STANDARDS

There are a variety of testing standards that can make use of a vise-action test fixture. Contact your Starrett representative for more information about your specific testing method and the available test fixtures.



Vise-Action Fixtures						
Model No.	Load Capacity			Jaw Face	Jaw Opening (Max) mm	Clamping Surface mm
	N	KGF	LBF			
WISE-205K-10-S	20	2	4	Smooth	3.4	10 x 10
WISE-205X-10-S	20	2	4	Smooth	3.4	10 x 10
WISE-341-6-P	100	10	22	Serrated	4	6 x 5
WISE-341-6-PX	100	10	22	Serrated	4	6 x 5
WISE-341-10-P	100	10	22	Serrated	4	10 x 15
WISE-341-10-PX	100	10	22	Serrated	4	10 x 15
WISE-140K	100	10	22	Serrated	8	10 x 15
WISE-227A-M5	100	10	22	No Jaws	8	Jaw Dependant
WISE-227S-46	100	10	22	No Jaws	46	Jaw Dependant
WISE-466-10	500	50	110	Smooth	33.1	10
WISE-56KA-1	1,000	100	225	No Jaws	8	Jaw Dependant
WISE-56GA-1	1,000	100	225	No Jaws	15	Jaw Dependant
WISE-56GHA-1	1,000	100	225	No Jaws	15	Jaw Dependant
WISE-240KA-1	2,500	250	550	No Jaws	10	Jaw Dependant
WISE-240KA-20-1	1,000	100	225	No Jaws	20	Jaw Dependant
WISE-240KA-30-1	1,000	100	225	No Jaws	30	Jaw Dependant
WISE-240KA-50-1	1,000	100	225	No Jaws	50	Jaw Dependant
WISE-470-25P	2,000	200	450	Serrated	10	25 x 25
WISE-9	2,500	250	550	No Jaws	6	Jaw Dependant
WISE-240G	5kN	500	1,124	No Jaws	24	Jaw Dependant
WISE-240G-S50	5kN	500	1,124	No Jaws	50	Jaw Dependant
WISE-240G-S100	5kN	500	1,124	No Jaws	100	Jaw Dependant
WISE-154A-10-1	10K	1,000	2,200	No Jaws	Jaw Dependant	Jaw Dependant
WISE-154S-20-1	20K	2,000	4,400	No Jaws	Jaw Dependant	Jaw Dependant
WISE-90-50	50K	5,000	11,124	No Jaws	Jaw Dependant	Jaw Dependant

VISE-ACTION FIXTURES

Vise-action test fixtures secure the sample with a pinching force. Vise-action test fixtures let you manually tighten the jaws to the sample. A variety of vise-action test fixtures are available and suited for a wide assortment of samples and applications.

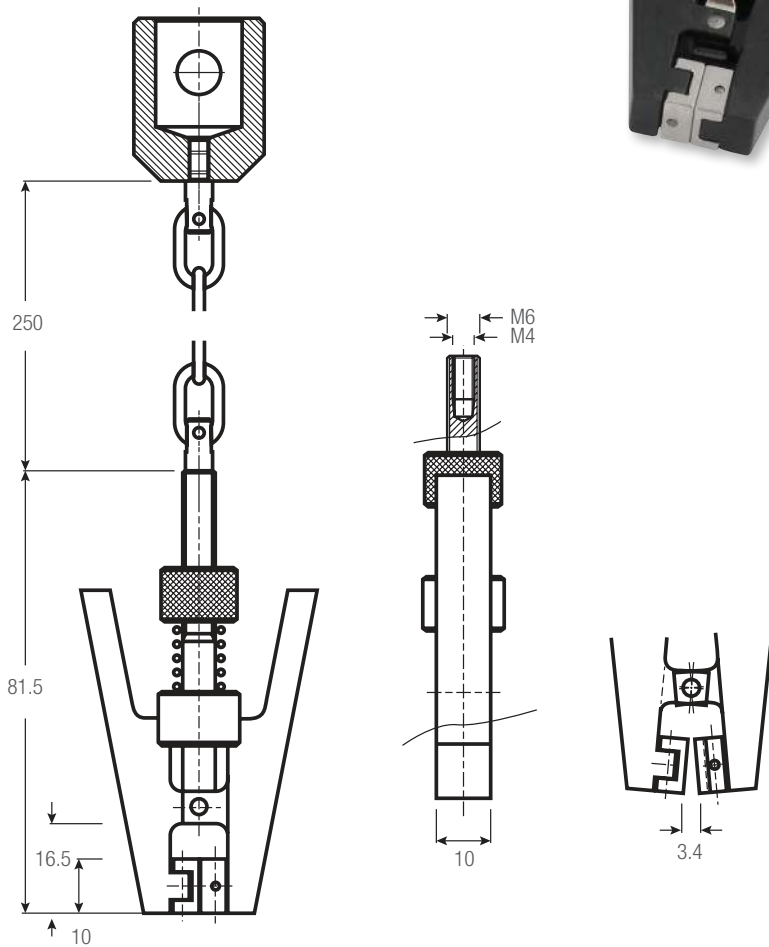
Many vise-action test fixtures may be supplied with pneumatic actuators. These are ideal for high-volume testing applications offering a quick open-release capability. Please see the Pneumatic specification sheet for more information.

205K

ALUMINUM, ANODIZED

- For general-purpose tensile testing applications
- Available as chain attachment or direct connect model
- Operating Temperatures 32° to 356°F (0° to 180°C)

DIMENSIONS



Vise-Action Fixtures													
Model No.	Load Capacity			Chain Attachment	Jaw Face	Jaw Opening (Max)		Clamping Surface		Weight (each)		Clevis Type	Supply
	N	KGf	LBF			in	mm	in	mm	lbs	kgs		
WISE-205K-10-S	20	2	4	Yes	Smooth	0.13	3.4	0.4 x 0.4	10 x 10	1.3	0.6	15.9	1
WISE-205X-10-S	20	2	4	No	Smooth	0.13	3.4	0.4 x 0.4	10 x 10	1.1	0.5	15.9	1

VISE-ACTION FIXTURES

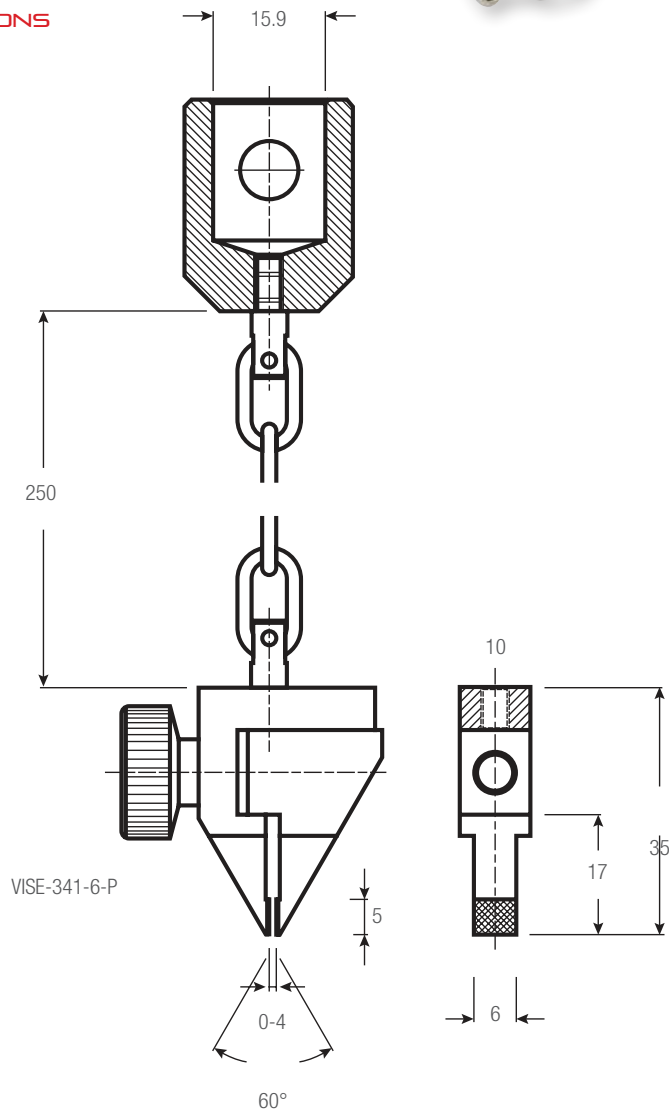
341

STEEL, PHOSPHATE COATED

- For general-purpose tensile testing applications
- Ideal for pull-off testing on electrical components
- With or without chain attachment
- Operating Temperatures 32° to 266°F (0° to 130°C)



DIMENSIONS



Vise-Action Fixtures

Model No.	Load Capacity			Chain Attachment	Jaw Face	Jaw Opening (Max)		Clamping Surface		Weight (each)		Clevis Type	Supply
	N	KGF	LBF			in	mm	in	mm	lbs	kgs		
WISE-341-6-P	100	10	22	Yes	Serrated	0.16	4	0.24 x 0.2	6 x 5	0.2	0.1	15.9	1
WISE-341-6-PX	100	10	22	No	Serrated	0.16	4	0.24 x 0.2	6 x 5	0.2	0.1	15.9	1
WISE-341-10-P	100	10	22	Yes	Serrated	0.16	4	0.4 x 0.6	10 x 15	0.2	0.1	15.9	1
WISE-341-10-PX	100	10	22	No	Serrated	0.16	4	0.4 x 0.6	10 x 15	0.2	0.1	15.9	1

WISE-ACTION FIXTURES

140

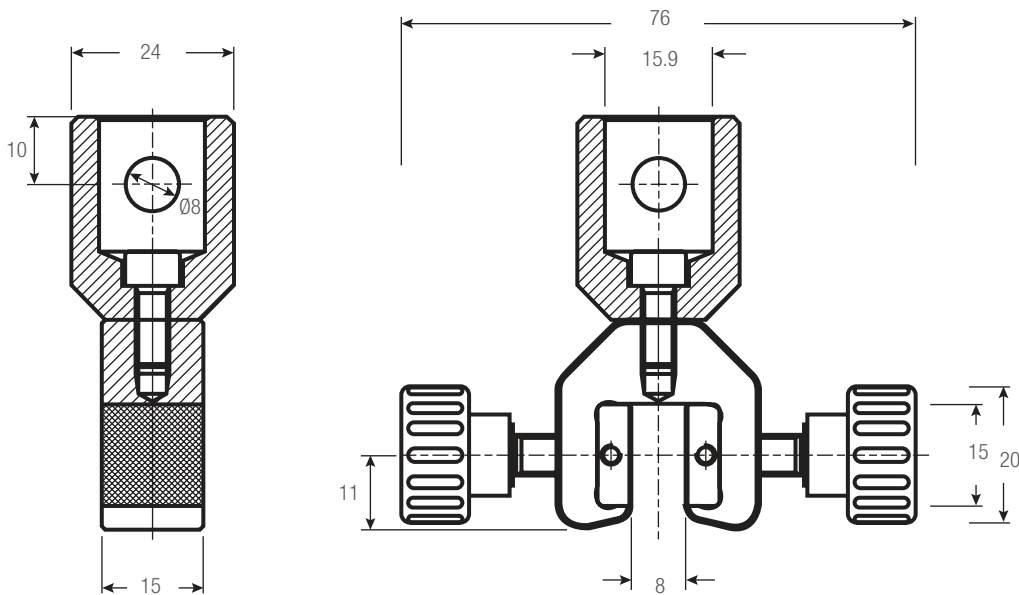
ALUMINUM, ANODIZED

- For general-purpose tensile testing applications
- Dual-action tightening from both sides
- Operating Temperatures 32° to 266°F (0° to 130°C)



Vise-Action Fixtures												
Model No.	Load Capacity			Jaw Face	Jaw Opening (Max)		Clamping Surface		Weight (each)		Clevis Type	Supply
	N	KGF	LBF		in	mm	in	mm	lbs	kgs		
WISE-140K-15P	100	10	22	Serrated	0.3	8	0.6 x 0.6	15 x 15	0.2	0.1	15.9	1

DIMENSIONS



140 JAW SETS

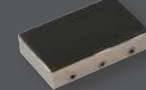
STEEL, HARDENED

- Supplied four (4) jaws per set
- Operating Temperatures 32° to 266°F (0° to 130°C)

Jaw Sets					
Model No.	Jaw Face	Jaw Opening (Max)		Clamping Surface	
		in	mm	in	mm
JAW140-B	Smooth	0.3	8	0.6 x 0.6	15 x 15
JAW140-BR	Rubber	0.2	6	0.6 x 0.6	15 x 15
JAW140-PY	Serrated	0.3	8	0.6 x 0.6	15 x 15

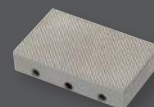
SMOOTH JAW

- Suitable for own further treatments
- Steel-blanks without coating



RUBBER-COATED JAW

- 1mm rubber coating (NBR)
- Nickel-plated



SERRATED JAW

- Pyramids 1.2 x 45°
- Hardened steel 58HRC
- Nickel-plated



VISE-ACTION FIXTURES

227

ALUMINUM, ANODIZED

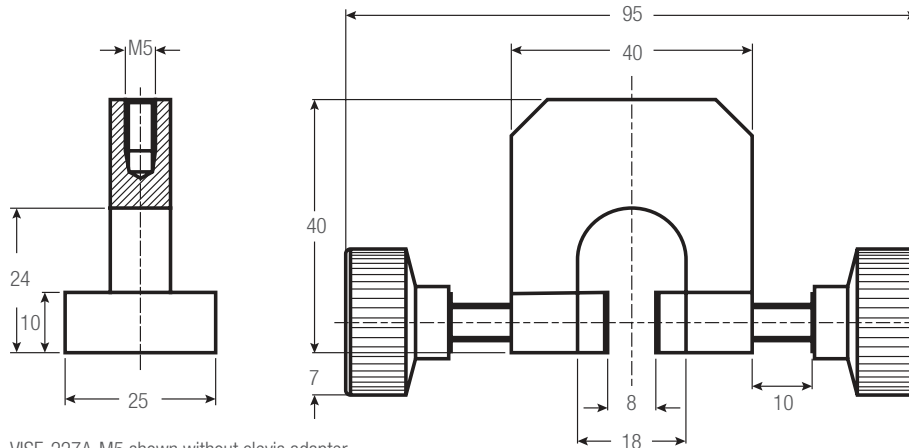
- For general-purpose tensile testing applications
- Dual-action tightening from both sides
- Order required jaw set separately
- Operating Temperatures 32° to 266°F (0° to 130°C)



Vise-Action Fixtures

Model No.	Load Capacity			Jaw Face	Jaw Opening (Max)		Clamping Surface		Weight (each)		Clevis Type mm	Supply
	N	KGF	LBF		mm	in	in	mm	lbs	kgs		
WISE-227A-M5	100	10	22	No Jaws	8	0.3	Jaw Dependent		0.2	0.1	15.9	2
WISE-227S-46	100	10	22	No Jaws	46	1.8	Jaw Dependent		0.2	0.1	15.9	2

DIMENSIONS



WISE-227A-M5 shown without clevis adapter

227 JAW SETS

STEEL, HARDENED

- Supplied four (4) jaws per set
- Operating Temperatures 32° to 266°F (0° to 130°C)

Jaw Sets

Model No.	Jaw Face	Jaw Opening (Max)				Clamping Surface	
		WISE-227-08		WISE-227-46		in	mm
JAW227-B25	Smooth	0.3	8	1.8	46	0.4 x 0.98	10 x 25
JAW227-BR25	Rubber	0.2	6	1.7	44	0.4 x 0.98	10 x 25
JAW227-PY25	Serrated	0.3	8	1.8	46	0.4 x 0.98	10 x 25
JAW227-WV25	Wave	0.3	8	1.8	46	0.4 x 0.98	10 x 25
JAW227-D25	Diamond	0.3	8	1.8	46	0.4 x 0.98	10 x 25
JAW227-B50	Smooth	0.2	6	1.7	44	0.4 x 1.97	10 x 50
JAW227-BR50	Rubber	0.16	4	1.65	42	0.4 x 1.97	10 x 50
JAW227-PY50	Serrated	0.2	6	1.7	44	0.4 x 1.97	10 x 50
JAW227-D50	Diamond	0.2	6	1.7	44	0.4 x 1.97	10 x 50
JAW227-B100	Smooth	0.2	6	1.7	44	0.4 x 3.94	10 x 100
JAW227-BR100	Rubber	0.16	4	1.65	42	0.4 x 3.94	10 x 100
JAW227-PY100	Serrated	0.2	6	1.7	44	0.4 x 3.94	10 x 100
JAW227-D100	Diamond	0.2	6	1.7	44	0.4 x 3.94	10 x 100

SMOOTH JAW

- Suitable for own further treatments
- Steel-blanks without coating
- Rubber-Coated Jaw
- 1mm rubber coating (NBR)
- Nickel-plated

SERRATED JAW

- Pyramids 1.2 x 45°
- Hardened steel 58HRC
- Nickel-plate

WAVE JAW

- For flexible materials
- Wave 5mm
- Hardened steel 58HRC
- Nickel-plated

DIAMOND-COATED JAW

- Clamping surface coated with synthetic diamonds
- Nickel-plated

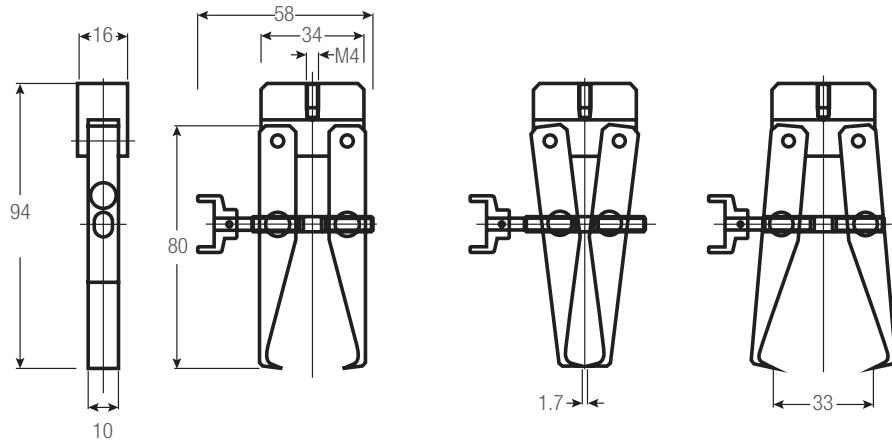
WISE-ACTION FIXTURES

466

ALUMINUM, ANODIZED

- For general-purpose tensile testing applications
- Thumbscrew operation
- Operating Temperatures -94° to 536°F (-70° to 280°C)

DIMENSIONS



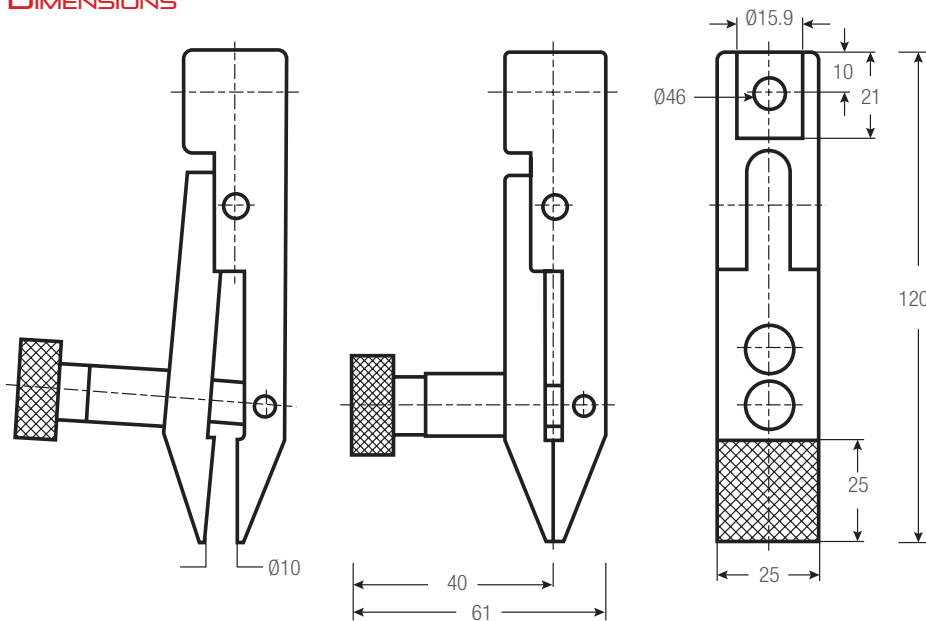
Vise-Action Fixtures												
Model No.	Load Capacity			Jaw Face	Jaw Opening (Max)		Clamping Surface		Weight (each)		Clevis Type	Supply
	N	KGF	LBF		in	mm	in	mm	lbs	kgs		
WISE-466-10	500	50	110	Smooth	1.3	33.1	0.39	10	0.4	0.18	15.9	1

470

ALUMINUM, ANODIZED

- For general-purpose tensile testing applications
- Fixed jaw faces
- Operating Temperatures 32° to 356°F (0° to 180°C)

DIMENSIONS



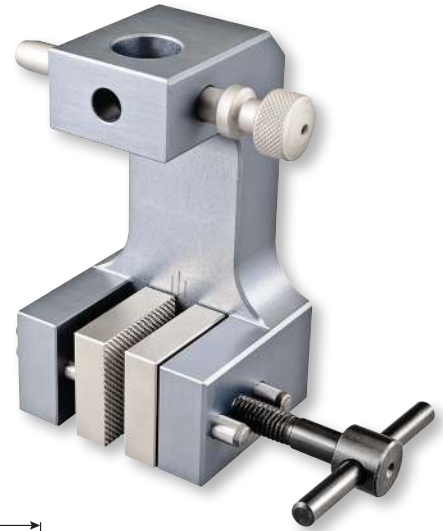
Vise-Action Fixtures												
Model No.	Load Capacity			Jaw Face	Jaw Opening (Max)		Clamping Surface		Weight (each)		Clevis Type	Supply
	N	KGF	LBF		in	mm	in	mm	lbs	kgs		
WISE-470-25P	2,000	200	450	Serrated	0.4	10	1 x 1	25 x 25	1.1	0.5	15.9	1

VISE-ACTION FIXTURES

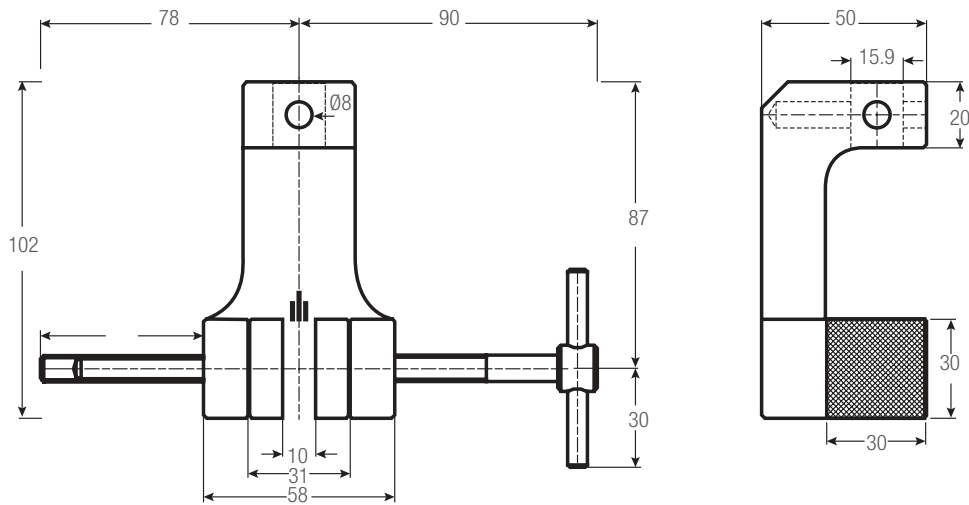
56K

ALUMINUM, ANODIZED

- For general-purpose tensile testing applications
- Dual-action tightening from both sides
- Order required jaw set separately
- Operating Temperatures 32° to 356°F (0° to 180°C)



DIMENSIONS



Vise-Action Fixtures

Model No.	Load Capacity			Jaw Face	Jaw Opening (Max)		Clamping Surface		Weight (each)		Clevis Type	Supply
	N	KGF	LBF		in	mm	in	mm	lbs	kgs		
WISE-56KA-1	1,000	100	225	No Jaws	0.3	8	Jaw Dependent		0.9	0.4	15.9	2

WISE-ACTION FIXTURES

56K JAW SETS

STEEL, HARDENED

- Supplied four (4) jaws per set
- Operating Temperatures 32° to 266°F (0° to 130°C)

Jaw Sets

Model No.	Jaw Face	Jaw Opening (Max)		Clamping Surface	
		in	mm	in	mm
JAW56K-B30	Smooth	0.4	10	1.18 x 1.18	30 x 30
JAW56K-BR30	Rubber	0.2	8	1.18 x 1.18	30 x 30
JAW56K-PY30	Serrated	0.4	10	1.18 x 1.18	30 x 30
JAW56K-V2	V-Notch	0.08-0.4 ϕ	2-10 ϕ	1.18 x 1.18	30 x 30
JAW56K-V3	V-Notch	0.12-0.4 ϕ	3-10 ϕ	1.18 x 1.18	30 x 30
JAW56K-WV30	Wave	0.4	10	1.18 x 1.18	30 x 30
JAW56K-D30	Diamond	0.4	10	1.18 x 1.18	30 x 30

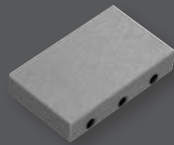
OPTIONAL CARRIER AND CARRIER SETS

STEEL, HARDENED

- Supplied four (4) jaws per set
- Operating Temperatures 32° to 266°F (0° to 130°C)
- Quick change jaw sets
- Requires both CARRIER-56K and CAR56K

Carrier Sets

Model No.	Material	Face	Jaw Dimensions (h x w)		Opening Width (h x w)		Supply (each)
			in	mm	in	mm	
CARRIER-56K	Steel	-	-	-	-	-	4
CAR56K-B36	Steel	Smooth	1.18 x 1.18	30 x 30	0 - 0.3	0 - 8	4
CAR56K-BR36	Steel	Rubber	1.18 x 1.18	30 x 30	0 - 0.2	0 - 6	4
CAR56K-D36	Steel	Diamond	1.18 x 1.18	30 x 30	0 - 0.3	0 - 8	4
CAR56K-PY36	Steel	Serrated	1.18 x 1.18	30 x 30	0 - 0.3	0 - 8	4



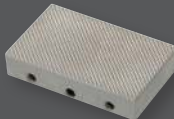
SMOOTH JAW

- Suitable for own further treatments
- Steel-blanks without coating



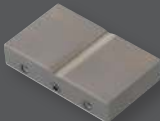
RUBBER-COATED JAW

- 1mm rubber coating (NBR)
- Nickel-plated



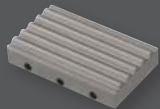
SERRATED JAW

- Pyramids 1.2 x 45°
- Hardened steel 58HRC
- Nickel-plated



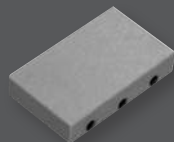
V-NOTCH JAW

- For all kinds of round samples
- Tooth pitch 1.2mm
- Hardened steel
- Nickel-plated



WAVE JAW

- For flexible materials
- Wave 5mm
- Hardened steel 58HRC
- Nickel-plated



DIAMOND-COATED JAW

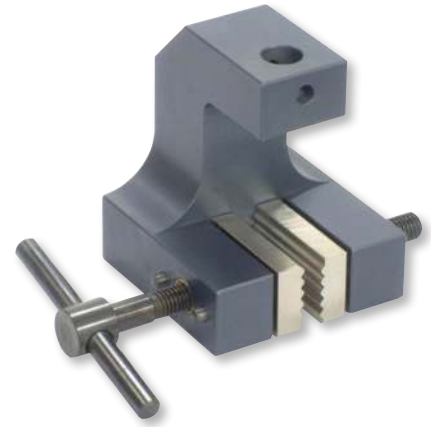
- Clamping surface coated with synthetic diamonds
- D91 (170/200 mesh)
- Nickel-plated

VISE-ACTION FIXTURES

56G

ALUMINUM, ANODIZED

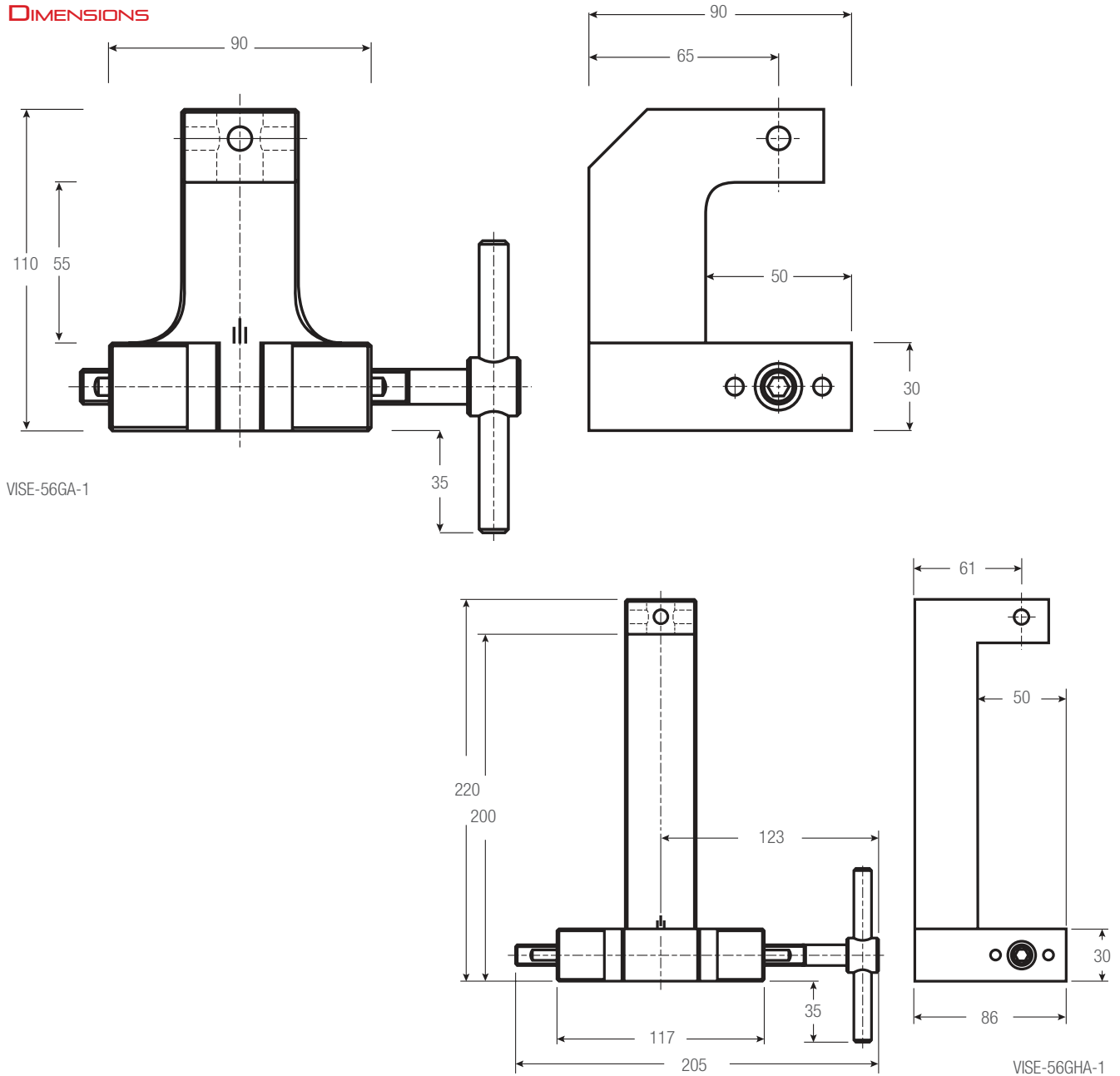
- For general-purpose tensile testing applications
- Dual-action tightening from both sides
- Order required jaw set separately
- Operating Temperatures 32° to 356°F (0° to 180°C)



Vise-Action Fixtures

Model No.	Load Capacity			Jaw Face	Jaw Opening (Max)		Clamping Surface		Weight (each)		Clevis Type mm	Supply
	N	KGF	LBF		in	mm	in	mm	lbs	kgs		
VISE-56GA-1	1,000	100	225	No Jaws	0.6	15	Jaw Dependent		2.4	1.1	15.9	2
VISE-56GHA-1	1,000	100	225	No Jaws	0.6	15	Jaw Dependent		3.0	1.4	15.9	2

DIMENSIONS



WISE-ACTION FIXTURES

56G JAW SETS

STEEL, HARDENED

- Supplied four (4) jaws per set
- Operating Temperatures 32° to 266°F (0° to 130°C)

Jaw Sets					
Model No.	Jaw Face	Jaw Opening (Max)		Clamping Surface	
		in	mm	in	mm
JAW56G-B30	Smooth	0.6	15	1.18 x 1.97	30 x 50
JAW56G-BR30	Rubber	0.5	13	1.18 x 1.97	30 x 50
JAW56G-PY30	Serrated	0.6	15	1.18 x 1.97	30 x 50
JAW56G-V2	V-Notch	0.08-0.6 ϕ	2-15 ϕ	1.18 x 1.97	30 x 50
JAW56G-V3	V-Notch	0.12-0.4 ϕ	3-11 ϕ	1.18 x 1.97	30 x 50
JAW56G-WV30	Wave	0.6	15	1.18 x 1.97	30 x 50
JAW56G-D30	Diamond	0.6	15	1.18 x 1.97	30 x 50

OPTIONAL CARRIER AND CARRIER SETS

STEEL, HARDENED

- Supplies four (4) jaws per set
- Operating Temperatures 32° to 266°F (0° to 130°C)
- Quick change jaw sets requires both CARRIER56K and CAR56K

Carrier Sets									
Model No.	Material	Face	Jaw Dimensions (h x w)		Opening Width		Opening Width		Supply (each)
			in	mm	in (h x w)	mm (GA-1)	in (h x w)	mm (GHA-1)	
CARRIER-56G	Steel	-	-	-	-	-	-	-	4
CAR56G-B50	Steel	Smooth	1.18 x 1.97	30 x 50	0 - 0.2	0 - 5	0 - 1.3	0 - 34	4
CAR56G-BR50	Steel	Rubber	1.18 x 1.97	30 x 50	0 - 0.1	0 - 3	0 - 1.2	0 - 32	4
CAR56G-D50	Steel	Diamond	1.18 x 1.97	30 x 50	0 - 0.2	0 - 5	0 - 1.3	0 - 34	4
CAR56G-PY50	Steel	Serrated	1.18 x 1.97	30 x 50	0 - 0.2	0 - 5	0 - 1.3	0 - 34	4

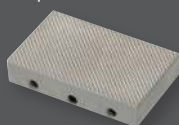
SMOOTH JAW

- Suitable for own further treatments
- Steel-blanks without coating



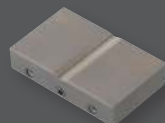
RUBBER-COATED JAW

- 1mm rubber coating (NBR)
- Nickel-plated



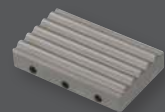
SERRATED JAW

- Pyramids 1.2 x 45°
- Hardened steel 58HRC
- Nickel-plated



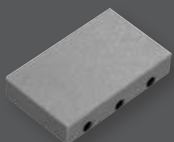
V-NOTCH JAW

- For all kinds of round samples
- Tooth pitch 1.2mm
- Hardened steel
- Nickel-plated



WAVE JAW

- For flexible materials
- Wave 5mm
- Hardened steel 58HRC
- Nickel-plated



DIAMOND-COATED JAW

- Clamping surface coated with synthetic diamonds
- D91 (170/200 mesh)
- Nickel-plated

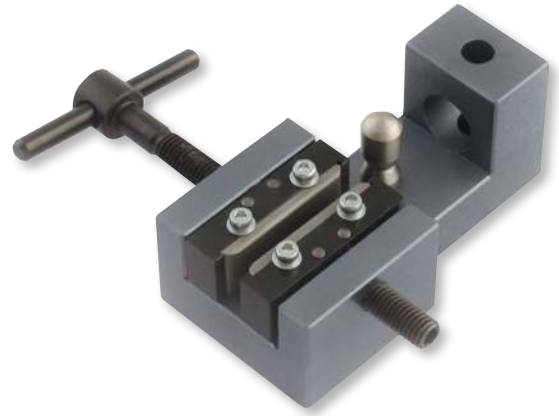


VISE-ACTION FIXTURES

9

ALUMINUM, ANODIZED

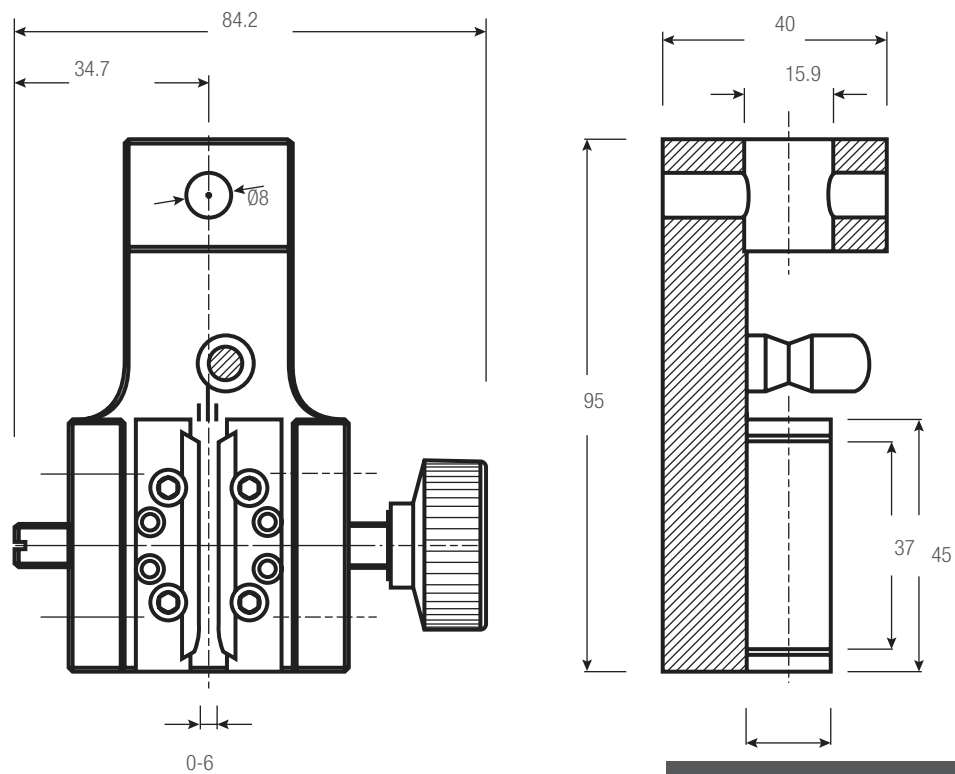
- For general-purpose tensile testing applications
- For fine wire, filament, string
- Order required jaw set separately
- Operating Temperatures -94° to 356°F (-70° to 180°C)



Vise-Action Fixtures

Model No.	Load Capacity			Jaw Face	Jaw Opening (Max)		Clamping Surface		Weight (each)		Clevis Type	Supply
	N	KGF	LBF		in	mm	in	mm	lbs	kgs		
VISE-9	2,500	250	550	No Jaws	0.2	6	Jaw Dependent		0.9	0.4	15.9	2

DIMENSIONS



9 JAW SETS

STEEL, HARDENED

- Supplied four (4) jaws per set
- Operating Temperatures 32° to 266°F (0° to 130°C)

Jaw Sets

Model No.	Jaw Face	Jaw Opening (Max)		Clamping Surface	
		in	mm	in	mm
JAW9-B15	Smooth	0.2	6	1.5 x 0.6	37 x 15
JAW9-D15	Diamond	0.2	6	1.5 x 0.6	37 x 15

SMOOTH JAW

- Suitable for own further treatments
- Steel-blanks without coating

DIAMOND-COATED JAW

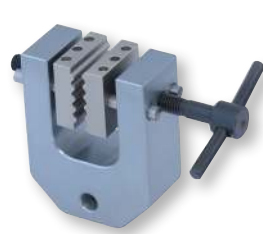
- Clamping surface coated with synthetic diamonds
- Nickel-plated

WISE-ACTION FIXTURES

240K

ALUMINUM, ANODIZED

- For general-purpose tensile testing applications
- Dual action tightening from both sides
- Order required jaw set separately
- Operating Temperatures -94° to 356°F (-70° to 180°C)



VISE-240KA-1



VISE-240KA-20-1



VISE-240KA-30-1

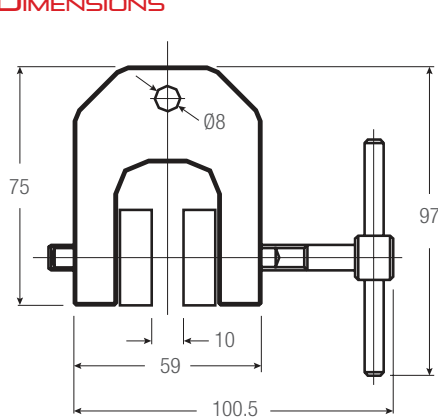


VISE-240KA-50-1

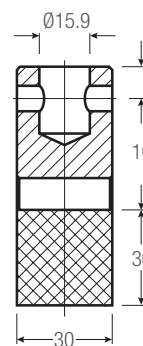
Vise-Action Fixtures

Model No.	Load Capacity			Jaw Face	Jaw Opening (Max)		Clamping Surface		Weight (each)		Clevis Type	Supply
	N	KGF	LBF		in	mm	in	mm	lbs	kgs		
VISE-240KA-1	2,500	250	550	No Jaws	0.4	10	Jaw Dependent		0.7	0.3	15.9	2
VISE-240KA-20-1	1,000	100	225	No Jaws	0.8	20	Jaw Dependent		0.7	0.3	15.9	2
VISE-240KA-30-1	1,000	100	225	No Jaws	1.2	30	Jaw Dependent		0.7	0.3	15.9	2
VISE-240KA-50-1	1,000	100	225	No Jaws	2.0	50	Jaw Dependent		0.7	0.3	15.9	2

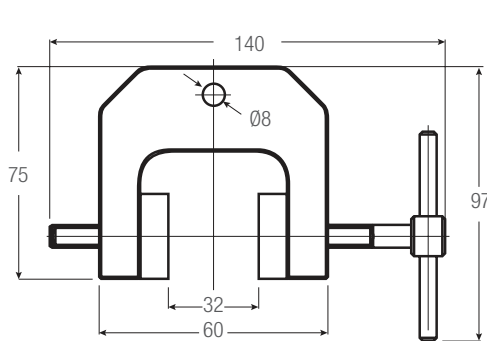
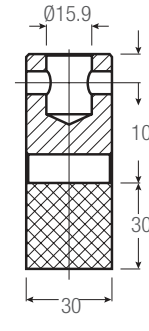
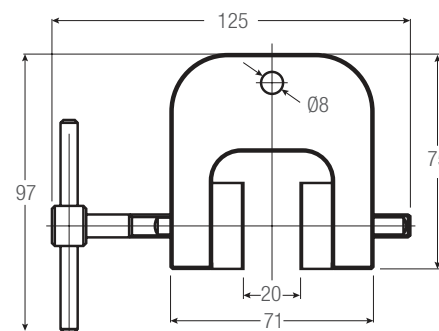
DIMENSIONS



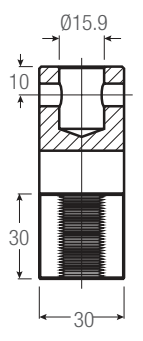
VISE-240KA-1



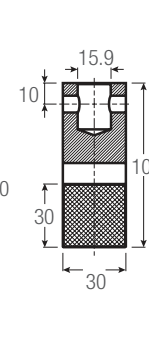
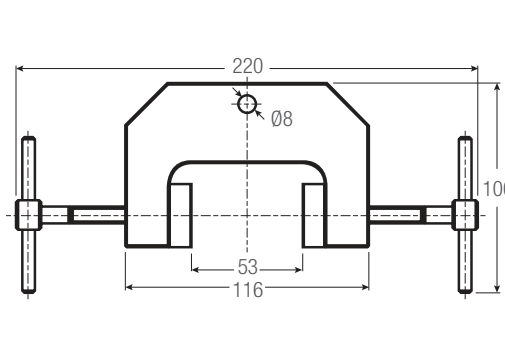
VISE-240KA-20-1



VISE-240KA-30-1



VISE-240KA-50-1



VISE-ACTION FIXTURES

240K JAW SETS

STEEL, HARDENED

- Supplied four (4) jaws per set
- Operating Temperatures 32° to 266°F (0° to 180°C)

Jaw Sets		Jaw Opening (Max)								Clamping Surface	
Model No.	Jaw Face	VISE-240KA-1		VISE-240KA-20-1		VISE-240KA-30-1		VISE-240KA-50-1		in	mm
		in	mm	in	mm	in	mm	in	mm		
JAW240K-B25	Smooth	0.4	10	0.8	20	1.2	30	2.0	52	1.18 x 1.18	30 x 30
JAW240K-BR25	Rubber	0.3	8	0.7	18	1.1	28	2.0	50	1.18 x 1.18	30 x 30
JAW240K-PY25	Serrated	0.4	10	0.8	20	1.2	30	2.0	52	1.18 x 1.18	30 x 30
JAW240K-V2	V-Notch	0.08-0.35ø	2-9ø	0.08-0.8ø	2-20ø	0.08-1.2ø	2-30ø	0.08-2.05ø	2-52ø	1.18 x 1.18	30 x 30
JAW240K-V9	V-Notch	0.1-0.35ø	3-9ø	0.1-0.8ø	3-20ø	0.1-1.2ø	3-30ø	0.1-2.05ø	3-52ø	1.18 x 1.18	30 x 30
JAW240K-WV30	Wave	0.4	10	0.8	20	1.2	30	2.0	52	1.18 x 1.18	30 x 30
JAW240K-D30	Diamond	0.4	10	0.8	20	1.2	30	2.0	52	1.18 x 1.18	30 x 30
JAW240K-B50	Smooth	0.8	20	0.8	20	1.2	30	2.0	52	1.18 x 2	30 x 50
JAW240K-BR50	Rubber	0.7	18	0.7	18	1.1	28	2.0	50	1.18 x 2	30 x 50
JAW240K-PY50	Serrated	0.8	20	0.8	20	1.2	30	2.0	52	1.18 x 2	30 x 50
JAW240K-WV50	Wave	0.8	20	0.8	20	1.2	30	2.0	52	1.18 x 2	30 x 50
JAW240K-D50	Diamond	0.8	20	0.8	20	1.2	30	2.0	52	1.18 x 2	30 x 50
JAW240K-B80	Smooth	1.2	30	0.8	20	1.2	30	2.0	52	1.18 x 3.2	30 x 80
JAW240K-BR80	Rubber	1.1	28	0.7	18	1.1	28	2.0	50	1.18 x 3.2	30 x 80
JAW240K-PY80	Serrated	1.2	30	0.8	20	1.2	30	2.0	52	1.18 x 3.2	30 x 80
JAW240K-WV80	Wave	1.2	30	0.8	20	1.2	30	2.0	52	1.18 x 3.2	30 x 80
JAW240K-D80	Diamond	1.2	30	0.8	20	1.2	30	2.0	52	1.18 x 3.2	30 x 80
JAW240K-B100	Smooth	2	50	0.8	20	1.2	30	2.0	52	1.18 x 3.9	30 x 100
JAW240K-BR100	Rubber	1.9	48	0.7	18	1.1	28	2.0	50	1.18 x 3.9	30 x 100
JAW240K-PY100	Serrated	2	50	0.8	20	1.2	30	2.0	52	1.18 x 3.9	30 x 100
JAW240K-WV100	Wave	2	50	0.8	20	1.2	30	2.0	52	1.18 x 3.9	30 x 100
JAW240K-D100	Diamond	2	50	0.8	20	1.2	30	2.0	52	1.18 x 3.9	30 x 100

OPTIONAL CARRIER AND CARRIER SETS

STEEL, HARDENED

- Supplied four (4) jaws per set
- Operating Temperatures 32° to 266°F (0° to 130°C)
- Quick change jaw sets require both CARRIER-240K and CAR240K

Carrier Sets													
Model No.	Material	Face	Jaw Dimensions (h x w)		Opening Width								Supply (each)
			in	mm	KA-1		KA-20-1		KA-30-1		KA-50-1		
					in	mm	in	mm	in	mm	in	mm	
CARRIER-240K	Steel	-	-	-	-	-	-	-	-	-	-	-	4
CAR240K-B36	Steel	Smooth	1.2 x 1.2	30 x 30	0 - 0.3	0 - 8	0 - 0.7	0 - 18	0 - 1.1	0 - 28	0 - 1.9	0 - 48	4
CAR240K-BR36	Steel	Rubber	1.2 x 1.2	30 x 30	0 - 0.2	0 - 6	0 - 0.6	0 - 16	0 - 1	0 - 26	0 - 1.8	0 - 46	4
CAR240K-D36	Steel	Diamond	1.2 x 1.2	30 x 30	0 - 0.3	0 - 8	0 - 0.7	0 - 18	0 - 1.1	0 - 28	0 - 1.9	0 - 48	4
CAR240K-PY36	Steel	Serrated	1.2 x 1.2	30 x 30	0 - 0.3	0 - 8	0 - 0.7	0 - 18	0 - 1.1	0 - 28	0 - 1.9	0 - 48	4

WISE-ACTION FIXTURES

240G

ALUMINUM, ANODIZED

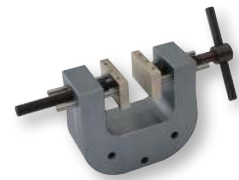
- For general-purpose tensile testing applications
- Dual action tightening from both sides
- Order required jaw set separately
- Operating Temperatures -76° to 356°F (-60° to 180°C)



WISE-240G-S100



WISE-240G

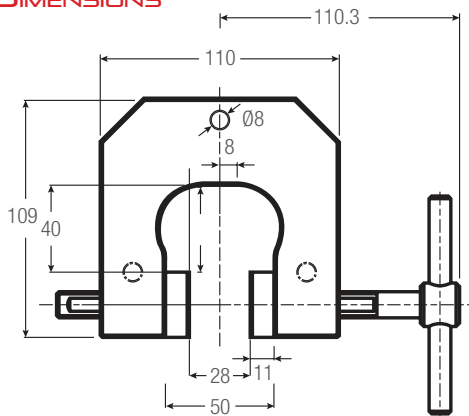


WISE-240G-S50

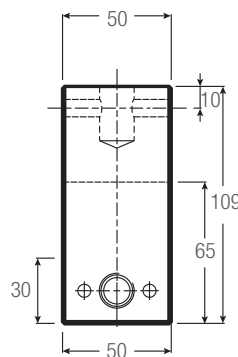
Vise-Action Fixtures

Model No.	Load Capacity			Jaw Face	Jaw Opening (Max)		Clamping Surface		Weight (each)		Clevis Type	Supply
	N	KGF	LBF		in	mm	in	mm	lbs	kgs		
WISE-240G	5kN	500	1,124	No Jaws	0.9	24	Jaw Dependent		2.9	1.3	15.9	2
WISE-240G-S50	5kN	500	1,124	No Jaws	2.0	50	Jaw Dependent		2.9	1.3	15.9	2
WISE-240G-S100	5kN	500	1,124	No Jaws	4.0	100	Jaw Dependent		5.1	2.3	15.9	2

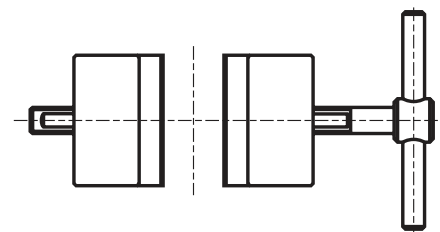
DIMENSIONS



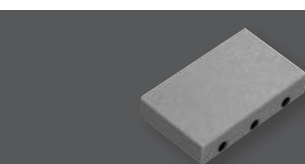
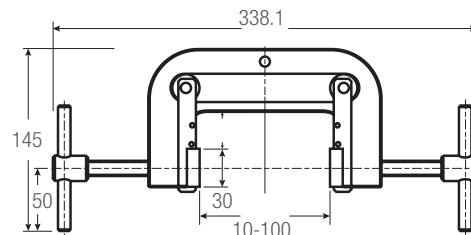
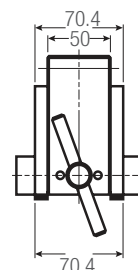
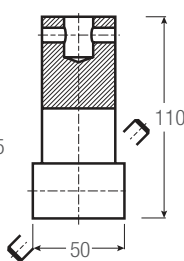
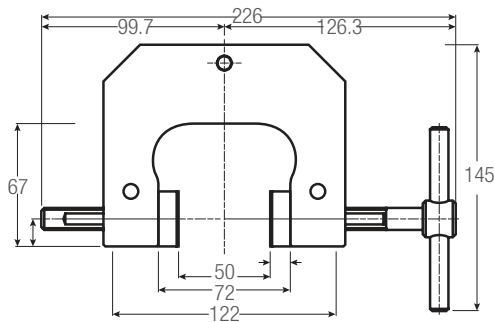
WISE-240G



WISE-240G-S50



WISE-240G-S100



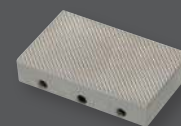
SMOOTH JAW

- Suitable for own further treatments
- Steel-blanks without coating



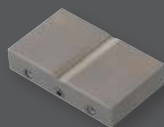
RUBBER-COATED JAW

- 1 mm rubber coating (NBR)
- Nickel-plated



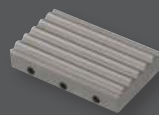
SERRATED JAW

- Pyramids 1.2 x 45°
- Hardened steel 58HRC
- Nickel-plated



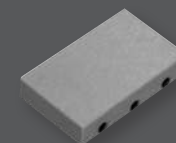
V-NOTCH JAW

- For all kinds of round samples
- Tooth pitch 1.2mm
- Hardened steel
- Nickel-plated



WAVE JAW

- For flexible materials
- Wave 5mm
- Hardened steel 58HRC
- Nickel-plated



DIAMOND-COATED JAW

- Clamping surface coated with synthetic diamonds
- D91 (170/200 mesh)
- Nickel-plated

VISE-ACTION FIXTURES

240G JAW SETS

STEEL, HARDENED

- Supplied four (4) jaws per set
- Operating Temperatures 32° to 266°F (0° to 180°C)

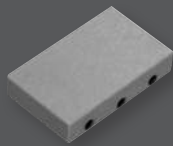
Jaw Sets											
Model No.	Jaw Face	Jaw Opening (Max)		VISE-240G-24		VISE-240G-50		VISE-240G-100		Clamping Surface	
		in	mm	in	mm	in	mm	in	mm	in	mm
JAW240G-B30	Smooth	0.94	24	1.97	50	-	-	-	-	1.18 x 2.0	30 x 50
JAW240G-BR30	Rubber	0.87	22	1.89	48	-	-	-	-	1.18 x 2.0	30 x 50
JAW240G-PY30	Serrated	0.94	24	1.97	50	-	-	-	-	1.18 x 2.0	30 x 50
JAW240G-V2	V-Notch	0.08-0.94 \emptyset	2-24 \emptyset	0.08-1.97 \emptyset	2-50 \emptyset	-	-	-	-	1.18 x 2.0	30 x 50
JAW240G-V5	V-Notch	0.2-0.94 \emptyset	5-24 \emptyset	0.2-1.97 \emptyset	5-50 \emptyset	-	-	-	-	1.18 x 2.0	30 x 50
JAW240G-WV30	Wave	0.94	24	1.97	50	-	-	-	-	1.18 x 2.0	30 x 50
JAW240G-D30	Diamond	0.94	24	1.97	50	-	-	-	-	1.18 x 2.0	30 x 50
JAW240G-B80	Smooth	1.02	26	1.89	48	0.4-4.0	10-100	-	-	1.18 x 3.2	30 x 80
JAW240G-BR80	Rubber	0.95	24	1.81	46	0.3-3.9	8-98	-	-	1.18 x 3.2	30 x 80
JAW240G-PY80	Serrated	1.02	26	1.89	48	0.4-4.0	10-100	-	-	1.18 x 3.2	30 x 80
JAW240G-WV80	Wave	1.02	26	1.89	48	0.4-4.0	10-100	-	-	1.18 x 3.2	30 x 80
JAW240G-D80	Diamond	1.02	26	1.89	48	0.4-4.0	10-100	-	-	1.18 x 3.2	30 x 80
JAW240G-B100	Smooth	1.02	26	1.89	48	0.4-4.0	10-100	-	-	1.18 x 3.9	30 x 100
JAW240G-BR100	Rubber	0.95	24	1.81	46	0.3-3.9	8-98	-	-	1.18 x 3.9	30 x 100
JAW240G-PY100	Serrated	1.02	26	1.89	48	0.4-4.0	10-100	-	-	1.18 x 3.9	30 x 100
JAW240G-WV100	Wave	1.02	26	1.89	48	0.4-4.0	10-100	-	-	1.18 x 3.9	30 x 100
JAW240G-D100	Diamond	1.02	26	1.89	48	0.4-4.0	10-100	-	-	1.18 x 3.9	30 x 100

OPTIONAL CARRIER AND CARRIER SETS

STEEL, HARDENED

- Supplied four (4) jaws per set
- Operating Temperatures 32° to 266°F (0° to 130°C)
- Quick change jaw sets require both CARRIER-240G and CAR240G

Carrier Sets										
Model No.	Material	Face	Jaw Dimensions (h x w)		Opening Width 240G		240G-S50		240G-S100	Supply (each)
			in	mm	in	mm	in	mm	mm	
CARRIER-240G	Steel	-	-	-	-	-	-	-	-	4
CAR240G-B50	Steel	Smooth	1.2 x 2.0	30 x 50	0 - 0.8	0 - 20	0 - 1.18	0 - 30	Not Compatible	4
CAR240G-BR50	Steel	Rubber	1.2 x 2.0	30 x 50	0 - 0.7	0 - 18	0 - 1.18	0 - 30	Not Compatible	4
CAR240G-D50	Steel	Diamond	1.2 x 2.0	30 x 50	0 - 0.8	0 - 20	0 - 1.18	0 - 30	Not Compatible	4
CAR240G-PY50	Steel	Serrated	1.2 x 2.0	30 x 50	0 - 0.8	0 - 20	0 - 1.18	0 - 30	Not Compatible	4



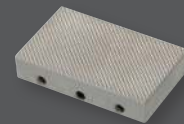
SMOOTH JAW

- Suitable for own further treatments
- Steel-blanks without coating



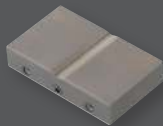
RUBBER-COATED JAW

- 1mm rubber coating (NBR)
- Nickel-plated



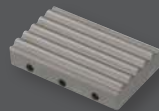
SERRATED JAW

- Pyramids 1.2 x 45°
- Hardened steel 58HRC
- Nickel-plated



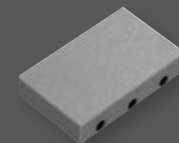
V-NOTCH JAW

- For all kinds of round samples
- Tooth pitch 1.2mm
- Hardened steel
- Nickel-plated



WAVE JAW

- For flexible materials
- Wave 5mm
- Hardened steel 58HRC
- Nickel-plated



DIAMOND-COATED JAW

- Clamping surface coated with synthetic diamonds
- D91 (170/200 mesh)
- Nickel-plated

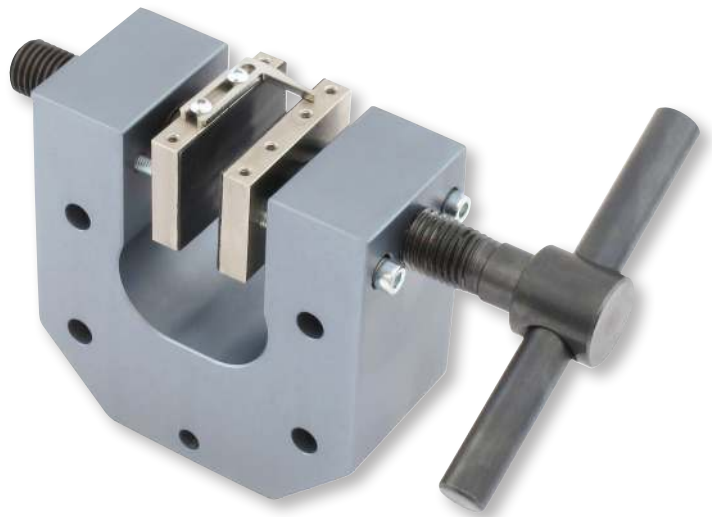
WISE-ACTION FIXTURES

154

ALUMINUM, ANODIZED (WISE-154-10)

STEEL, MANGANESE PHOSPHATED (WISE-154-20)

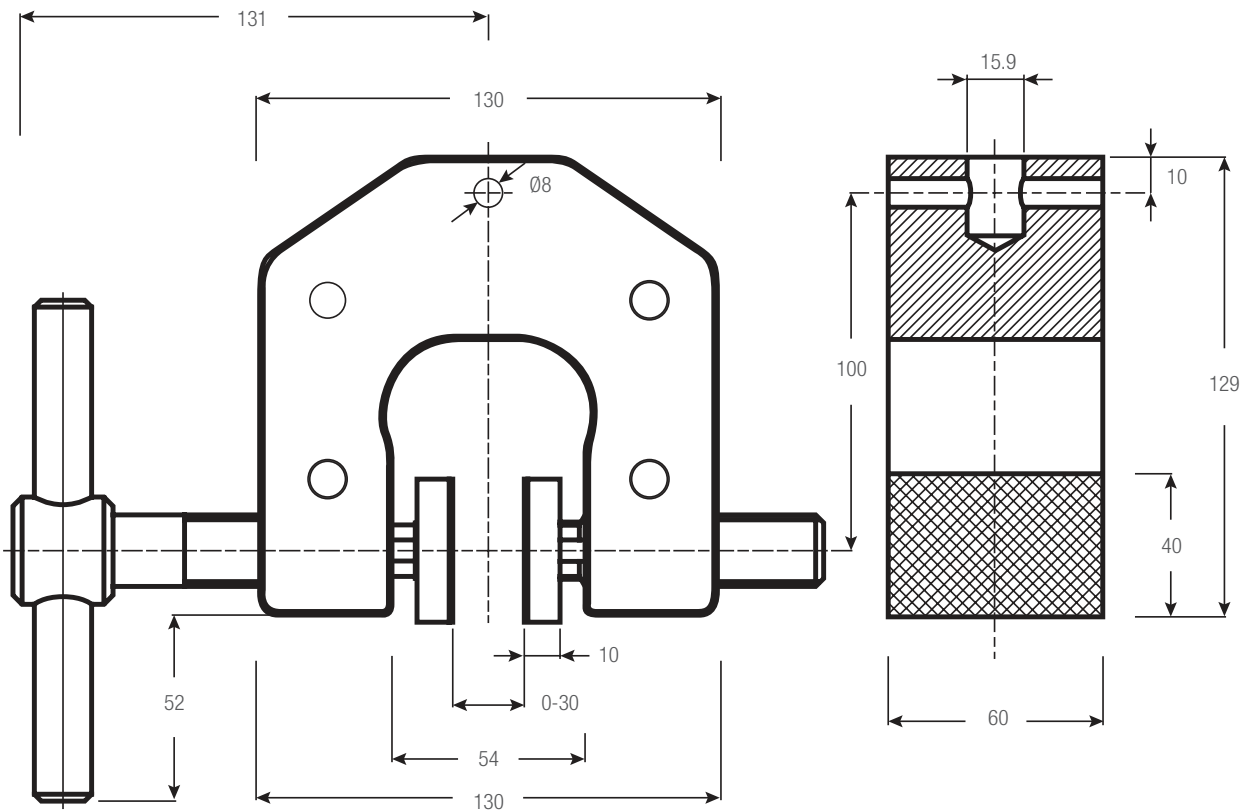
- For general-purpose tensile testing applications
- Dual action tightening from both sides
- Order required jaw set separately
- Operating Temperatures
 - WISE-154A-10-1 32° to 356°F (0° to 180°C)
 - WISE-154S-20-1 32° to 662°F (0° to 350°C)



WISE-ACTION FIXTURES

Vise-Action Fixtures												
Model No.	Load Capacity			Jaw Face	Jaw Opening (Max)		Clamping Surface		Weight (each)		Clevis Type	Supply
	N	KGF	LBF		in	mm	in	mm	lbs	kgs		
WISE-154A-10-1	10K	1,000	2,200	No Jaws	Jaw Dependent		Jaw Dependent		5.3	2.4	15.9	2
WISE-154S-20-1	20K	2,000	4,400	No Jaws	Jaw Dependent		Jaw Dependent		11.0	5.0	15.9	2

DIMENSIONS



VISE-ACTION FIXTURES

154 JAW SETS

STEEL, HARDENED

- Supplied four (4) jaws per set
- Operating Temperatures 32° to 266°F (0° to 180°C)

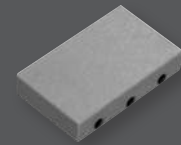
Jaw Sets					
Model No.	Jaw Face	Jaw Opening (Max)		Clamping Surface	
		in	mm	in	mm
JAW154-B60	Smooth	1.34	34	1.6 x 2.4	40 x 60
JAW154-BR60	Rubber	1.26	32	1.6 x 2.4	40 x 60
JAW154-PY60	Serrated	1.34	34	1.6 x 2.4	40 x 60
JAW154-V4	V-Notch	0.16-0.47 ϕ	4-12 ϕ	1.6 x 2.4	40 x 60
JAW154-V6	V-Notch	0.24-1.34 ϕ	6-34 ϕ	1.6 x 2.4	40 x 60
JAW154-WV60	Wave	1.34	34	1.6 x 2.4	40 x 60
JAW154-D60	Diamond	1.34	34	1.6 x 2.4	40 x 60
JAW154-B100	Smooth	1.18	30	1.6 x 3.9	40 x 100
JAW154-BR100	Rubber	1.1	28	1.6 x 3.9	40 x 100
JAW154-PY100	Serrated	1.18	30	1.6 x 3.9	40 x 100
JAW154-WV100	Wave	1.18	30	1.6 x 3.9	40 x 100
JAW154-D100	Diamond	1.18	30	1.6 x 3.9	40 x 100

OPTIONAL CARRIER AND CARRIER SETS

STEEL, HARDENED

- Supplied four (4) jaws per set
- Operating Temperatures 32° to 266°F (0° to 130°C)
- Quick change jaw sets require both CARRIER-154 and CAR154

Carrier Sets							
Model No.	Material	Face	Jaw Dimensions (h x w)		Opening Width		Supply (each)
			mm	in	mm	in	
CARRIER-154	Steel	-	-	-	-	-	4
CAR154-BR60	Steel	Rubber	40 x 60	1.5 x 2.3	0 - 22	0 - 0.8	4
CAR154-D60	Steel	Diamond	40 x 60	1.5 x 2.3	0 - 24	0 - 0.9	4
CAR154-PY60	Steel	Serrated	Clamp Height: 40	1.5	0 - 24	0 - 0.9	4
CAR154-V4	Steel	Vee-Type	Clamp Height: 40	1.5	4 - 24 ϕ	0.15 - .9	4
CAR154-B60	Steel	Smooth	40 x 60	1.5 x 2.3	0 - 22	0 - 0.8	4
CAR154-WV60	Steel	Wave	40 x 60	1.5 x 2.3	0 - 24	0 - 0.9	4
CARRIER-154-100	Steel	-	-	-	-	-	4
CAR154-B100	Steel	Smooth	50 x 100	1.9 x 3.9	0 - 16	0 - 0.6	4
CAR154-BR100	Steel	Rubber	50 x 100	1.9 x 3.9	0 - 14	0 - 0.5	4
CAR154-WV100	Steel	Wave	50 x 100	1.9 x 3.9	0 - 16	0 - 0.6	4
CAR154-D100	Steel	Diamond	50 x 100	1.9 x 3.9	0 - 16	0 - 0.6	4
CAR154-PY100	Steel	Serrated	50 x 100	1.9 x 3.9	0 - 16	0 - 0.6	4



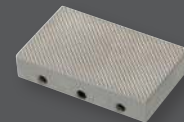
SMOOTH JAW

- Suitable for own further treatments
- Steel-blanks without coating



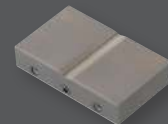
RUBBER-COATED JAW

- 1mm rubber coating (NBR)
- Nickel-plated



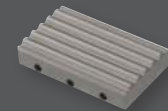
SERRATED JAW

- Pyramids 1.2 x 45°
- Hardened steel 58HRC
- Nickel-plated



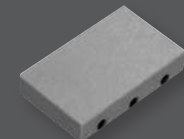
V-NOTCH JAW

- For all kinds of round samples
- Tooth pitch 1.2mm
- Hardened steel
- Nickel-plated



WAVE JAW

- For flexible materials
- Wave 5mm
- Hardened steel 58HRC
- Nickel-plated



DIAMOND-COATED JAW

- Clamping surface coated with synthetic diamonds
- D91 (170/200 mesh)
- Nickel-plated

WISE-ACTION FIXTURES

90

STEEL, MANGANESE PHOSPHATE COATING

- For general-purpose tensile testing applications
- Dual action tightening from both sides
- Order required jaw set separately
- Operating temperature: 32° to 356°F (0° to 180°C)



Vise-Action Fixtures											
Part Number	Load Capacity			Material	Jaw Opening (Max)		Face	Weight (each)		Clevis Type mm	Supply
	N	KGF	LBF		in	mm		lbs	kgs		
WISE-90-50	50kN	5,000	11,250	Steel	Jaw Dependent		No Jaw Face	26.4	12	31.7	2

Jaw Sets						
Part Number	Material	Jaw Opening (Max)		Face	Jaw Dimensions mm (h x w)	Supply
		in	mm			
JAW90-PY66	Steel	0-1.18	0-30	Serrated	60 x 66	4

DIMENSIONS

