



SCISSOR FIXTURES

SCISSOR FIXTURES

Scissor test fixtures secure the sample with a pinching force. The rate of clamping force changes depending on the jaw opening width. These are ideal for high-volume testing applications and are self-aligning and self-tightening.

OPERATION

Scissor test fixtures are self-tightening and self-aligning. The initial gripping force is supplied by spring tension. The clamping force to tensile force changes according to the jaw opening width. The larger the width, the more clamping force is applied.

TESTING STANDARDS

There are a variety of testing standards that may be used with scissor test fixtures. Contact your Starrett representative for more information about your specific testing method and the available test fixtures.

11

STEEL, STAINLESS

- For general-purpose tensile testing applications
- Spring tension tightening
- Jaw faces must be ordered separately
- Operating Temperatures -94° to 266°F (-70° to 130°C)

11 JAW SETS

STEEL, HARDENED

- Supplied two (2) jaws per set
- Operating Temperatures -94° to 266°F (-70° to 130°C)



Scissor Fixtures - SCISSOR-11SS-5-1

Model No.	Load Capacity			Sample Width (Max)		Sample Thickness (Max)		Weight (each)		Clevis Type	Supply
	N	KGF	LBF	in	mm	in	mm	lbs	kgs		
SCISSOR-11SS-5-1	5,000	500	1,100	1.97	50	0.75	19	2.6	1.2	15.9	2

Jaw Sets - SCISSOR-11SS-5-1

Model No.	Jaw Face	Jaw Opening (max)		Clamping Surface		Supply
		in	mm	in	mm	
JAW11-5-B50	Smooth	0 - 0.75	0 - 19	0 - 0.79	20 x 50	4
JAW11-5-PY50	Serrated	0 - 0.75	0 - 19	0 - 0.79	20 x 50	4

Scissor Fixtures - SCISSOR-11-20A-1

Model No.	Load Capacity			Sample Width (Max)		Sample Thickness (Max)		Weight (each)		Clevis Type	Supply
	N	KGF	LBF	in	mm	in	mm	lbs	kgs		
SCISSOR-11-20A-1	20K	2,000	4,400	1.97	50	Jaw Dependent		4.4	2.0	15.9	2

Jaw Sets - SCISSOR-11-20A-1

Model No.	Jaw Face	Jaw Opening (max)		Clamping Surface		Supply
		in	mm	in	mm	
JAW11-20-B50	Smooth	0 - 1	0 - 25	0.98 x 1.97	25 x 50	4
JAW11-20-B100	Smooth	0 - 1	0 - 25	0.98 x 3.94	25 x 100	4
JAW11-20-PY50	Serrated	0 - 1	0 - 25	0.98 x 1.97	25 x 50	4
JAW11-20-PY100	Serrated	0 - 1	0 - 25	0.98 x 3.94	25 x 100	4
JAW11-20-RD50	Serrated	0 - 0.79	0 - 20	0.98 Ø x 2.05	25 Ø x 52	4
JAW11-20-VEE4	Vee-Type	0.16 - 0.24	4 - 16 Ø	Clamp Height: 0.98	Clamp Height: 25	4
JAW11-20-WV50	Wave	0 - 1	0 - 25	0.98 x 1.97	25 x 50	4
JAW11-20-WV100	Wave	0 - 1	0 - 25	0.98 x 3.94	25 x 100	4

Scissor Fixtures - SCISSOR-11-50S-1

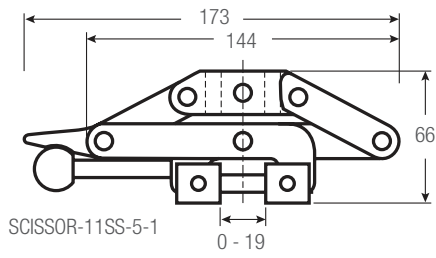
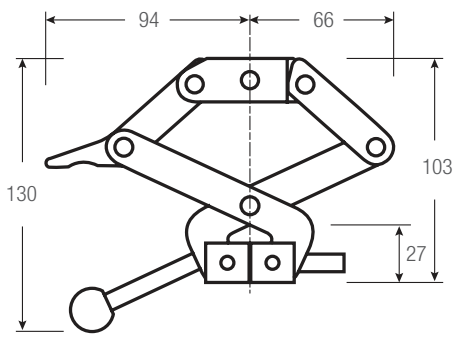
Model No.	Load Capacity			Sample Width (Max)		Sample Thickness (Max)		Weight (each)		Clevis Type	Supply
	N	KGF	LBF	in	mm	in	mm	lbs	kgs		
SCISSOR-11-50S-1	50K	5,000	11,000	3.93	100	Jaw Dependent		20.1	9.1	15.9	2

Jaw Sets - SCISSOR-11-50S-1

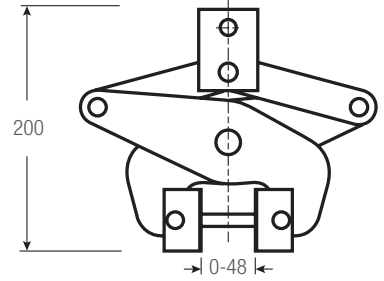
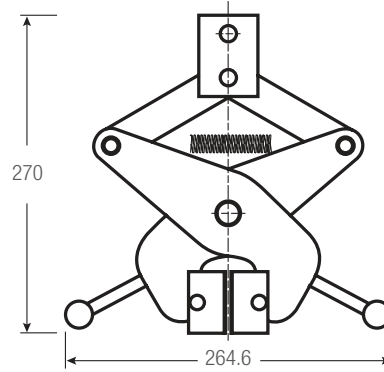
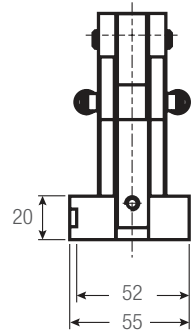
Model No.	Jaw Face	Jaw Opening (max)		Clamping Surface		Supply
		in	mm	in	mm	
JAW11-50-PY	Serrated	0 - 1.89	0 - 48	1.96 - 3.94	50 x 100	4
JAW11-50-V10	Vee-Type	0 - 1.89	0 - 48	0.39 - 1.89 Ø	10 - 48 Ø	4

SCISSOR FIXTURES

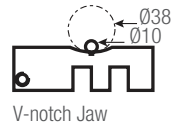
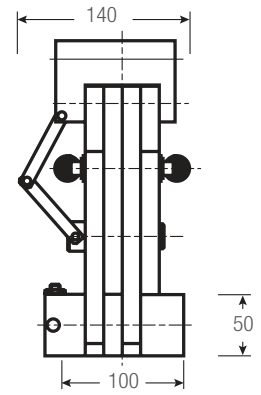
DIMENSIONS



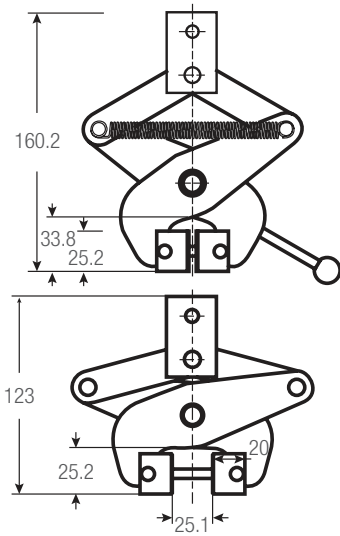
SCISSOR-11SS-5-1



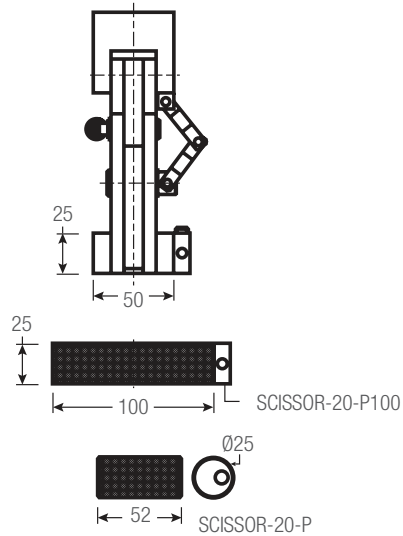
SCISSOR-11-50S-1



V-notch Jaw



SCISSOR-11-20A-1



SCISSOR-20-P100

SCISSOR-20-P

SCISSOR FIXTURES

230

STEEL

- For general-purpose tensile testing applications on soft material such as elastomer, plastic, rubber, bones, textiles, etc.
- 20 mm diameter cylindrical jaws
- Operating Temperatures 32° to 266°F (0° to 130°C)



Scissor Fixtures

Model No.	Load Capacity			Jaw Face	Jaw Opening (Max)		Clamping Surface		Weight (each)		Clevis Type	Supply
	N	KGF	LBF		in	mm	in	mm	lbs	kgs		
SCISSOR-230S-1	2,000	200	450	Serrated	1.1	28	0.8	20	1.1	0.5	15.9	2

DIMENSIONS

