



ROPE AND BOLLARD FIXTURES

ROPE FIXTURES

Starrett rope fixtures are used for testing rope, cable, filament, yarns, etc.

These fixtures are used for tensile applications. Features include a guide roller that helps prevent breakage within the test fixture.

OPERATION

Rope fixtures feature a design that helps ensure proper sample alignment and that promotes a correct sample break between the upper and lower test fixture. These fixtures feature a spool used to wrap the sample. The sample is typically wrapped around the spool 1-1/2 or 2 times depending on the strength of the material.

These rope fixtures let you position your material under test around a cylindrical spool so that force is applied directly in line with the load cell sensor.

TESTING STANDARDS

There are a variety of testing standards for rope, filament, cords, fine wires and cables. Contact your Starrett representative for more information about your specific testing method and the available test fixtures.



Rope Fixtures						
Model No.	Load Capacity			Jaw Face Type	Roller Diameter	Sample Diameter
	N	KGF	LBF			
ROPE-76-1A-1	1,000	100	225	Rubber	20 mm ø	2 mm ø
ROPE-76-1A-D	1,000	100	225	Diamond	20 mm ø	2 mm ø
ROPE-76-5A-1	5,000	500	1,100	Serrated	40 mm ø	5mm ø
ROPE-76-5A-D	5,000	500	1,100	Diamond	40 mm ø	5mm ø
ROPE-255-10-PY	10K	1,000	2,200	Serrated	26 mm ø	5mm ø
ROPE-255-10-D	10K	1,000	2,200	Diamond	26 mm ø	5mm ø
ROPE-76-20S-1	20K	2,000	4,500	Serrated	94 mm ø	9 mm ø
ROPE-170-50	50K	5,000	11,000	Serrated	162 mm ø	20 mm ø

ROPE FIXTURES

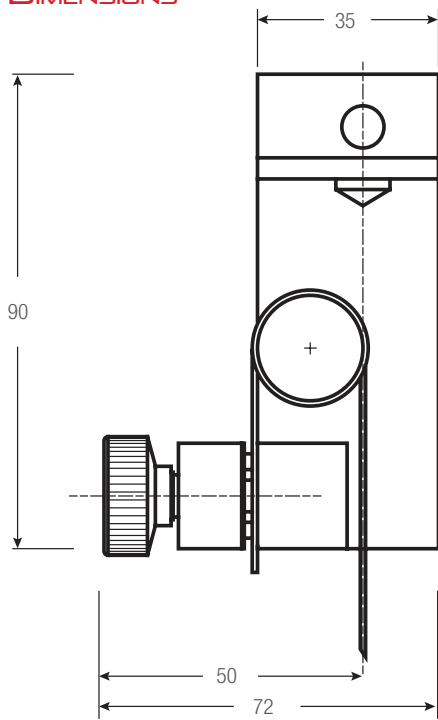
76

ALUMINUM, ANODIZED FINISH

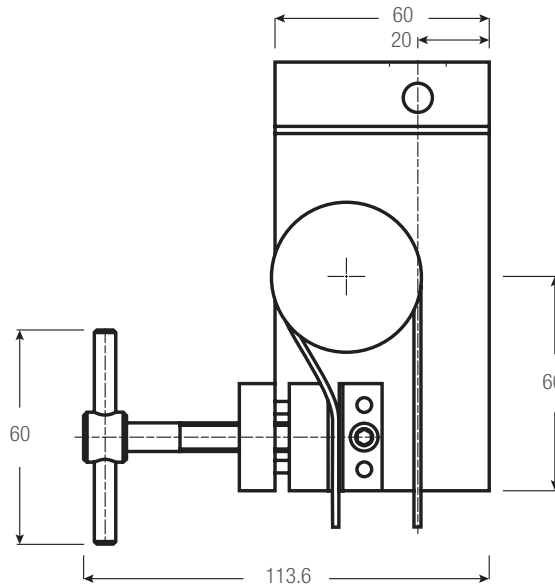
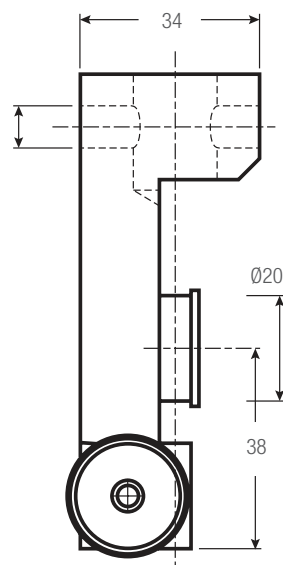
- For general-purpose tensile testing applications
- Use on small diameter wire, rope, filaments, thread, etc.
- Operating Temperatures
 - ROPE-76-1: 32° to 158°F (0° to 70°C)
 - ROPE-76-5: 32° to 356°F (0° to 180°C)



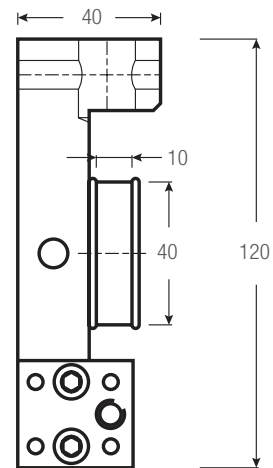
DIMENSIONS



ROPE-76-1A-1



ROPE-76-5A-1



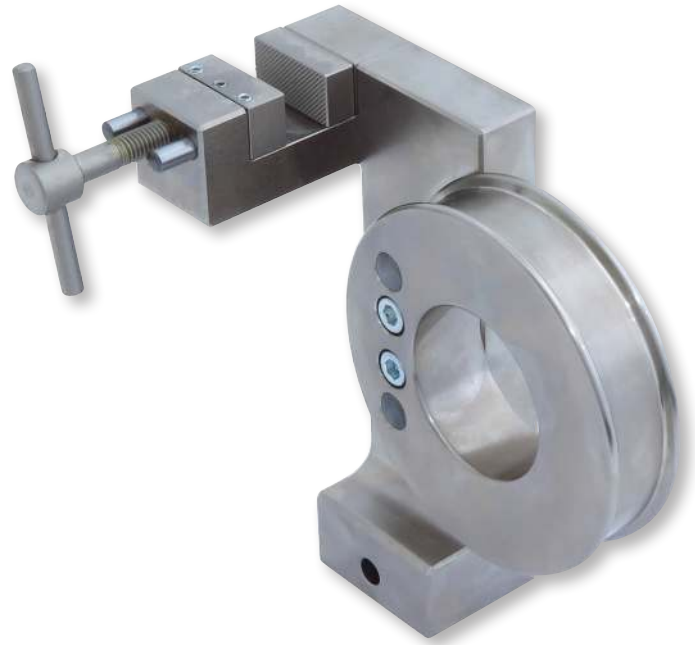
Rope Fixtures															
Model No.	Load Capacity			Jaw Face	Roller ϕ		Sample ϕ (Max)		Clamping Surface (h x w)		Weight (each)		Clevis Type	Supply	
	N	KGF	LBF		in	mm	in	mm	in	mm	lbs	kgs			
ROPE-76-1A-1	1,000	100	225	Rubber	0.8	20	0.08	2	0.8 x 0.4	20 x 10	0.7	0.3	15.9	2	
ROPE-76-1A-D	1,000	100	225	Diamond	0.8	20	0.08	2	0.8 x 0.4	20 x 10	0.7	0.3	15.9	2	
ROPE-76-5A-1	5,000	500	1,100	Serrated	1.6	40	0.2	5	1.2 x 0.5	30 x 12	2.0	0.9	15.9	2	
ROPE-76-5A-D	5,000	500	1,100	Diamond	1.6	40	0.2	5	1.2 x 0.5	30 x 12	2.0	0.9	15.9	2	

ROPE FIXTURES

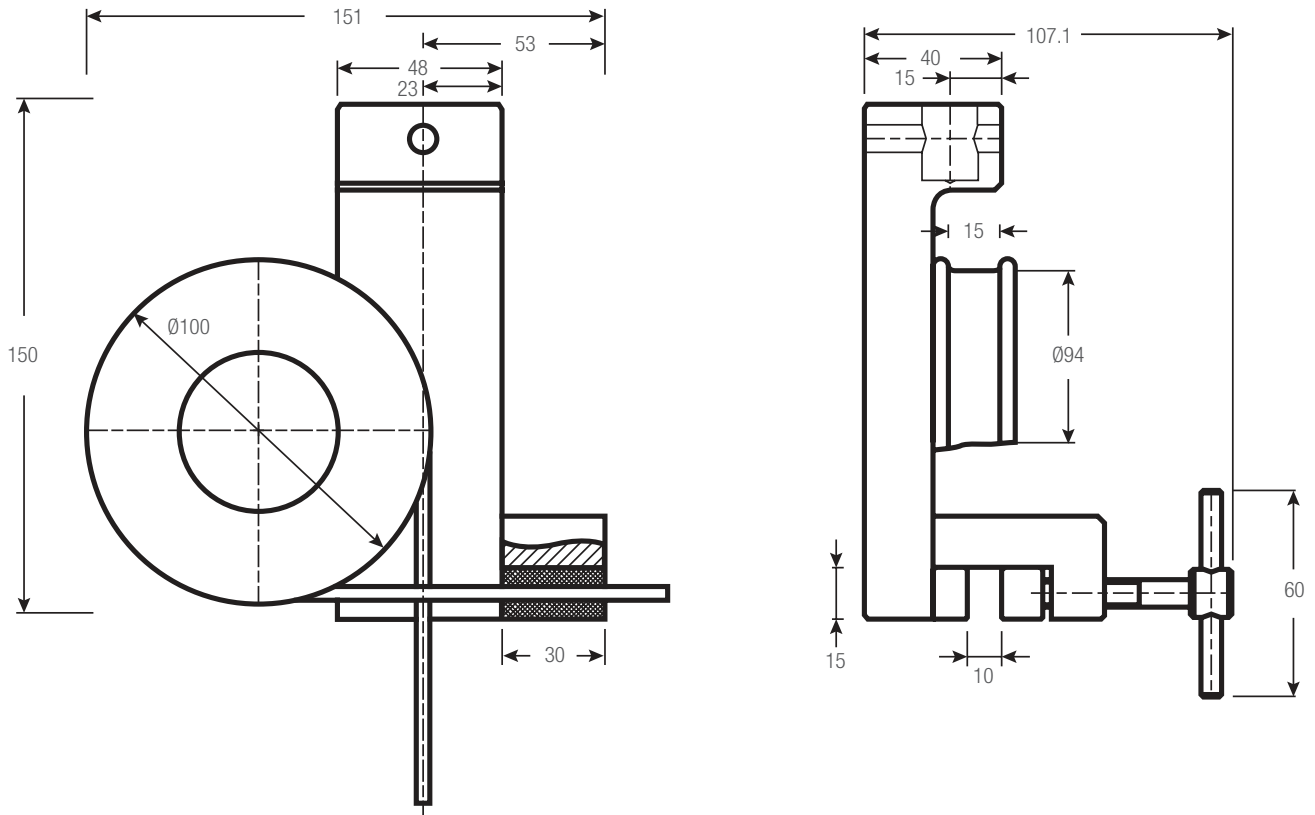
76

STEEL, NICKEL FINISH

- For general-purpose tensile testing applications up to 20kN
- Use on small diameter wire, rope, filaments, thread, etc.
- Operating Temperatures 32° to 356°F (0° to 180°C)



DIMENSIONS



Rope Fixtures

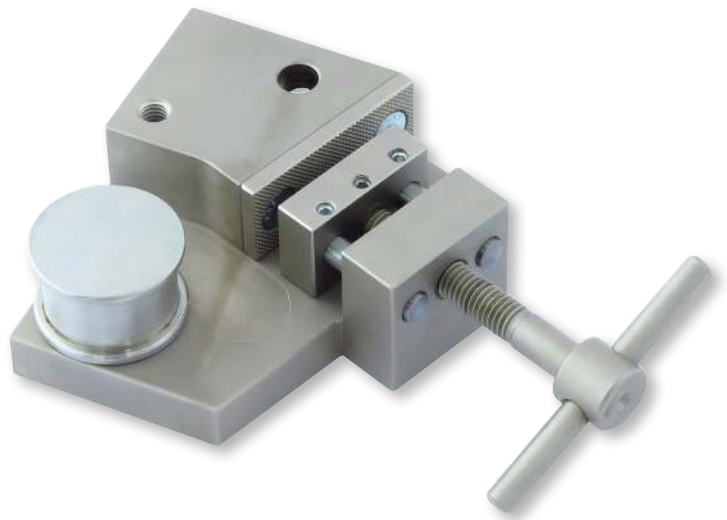
Model No.	Load Capacity			Jaw Face	Roller ϕ		Sample ϕ (Max)		Clamping Surface (h x w)		Weight (each)		Clevis Type	Supply
	N	KGF	LBF		in	mm	in	mm	in	mm	lbs	kgs		
ROPE-76-20S-1	20K	2,000	4,500	Serrated	3.7	94	0.4	9	1.2 x	30 x 15	6.2	2.8	15.9	2

ROPE FIXTURES

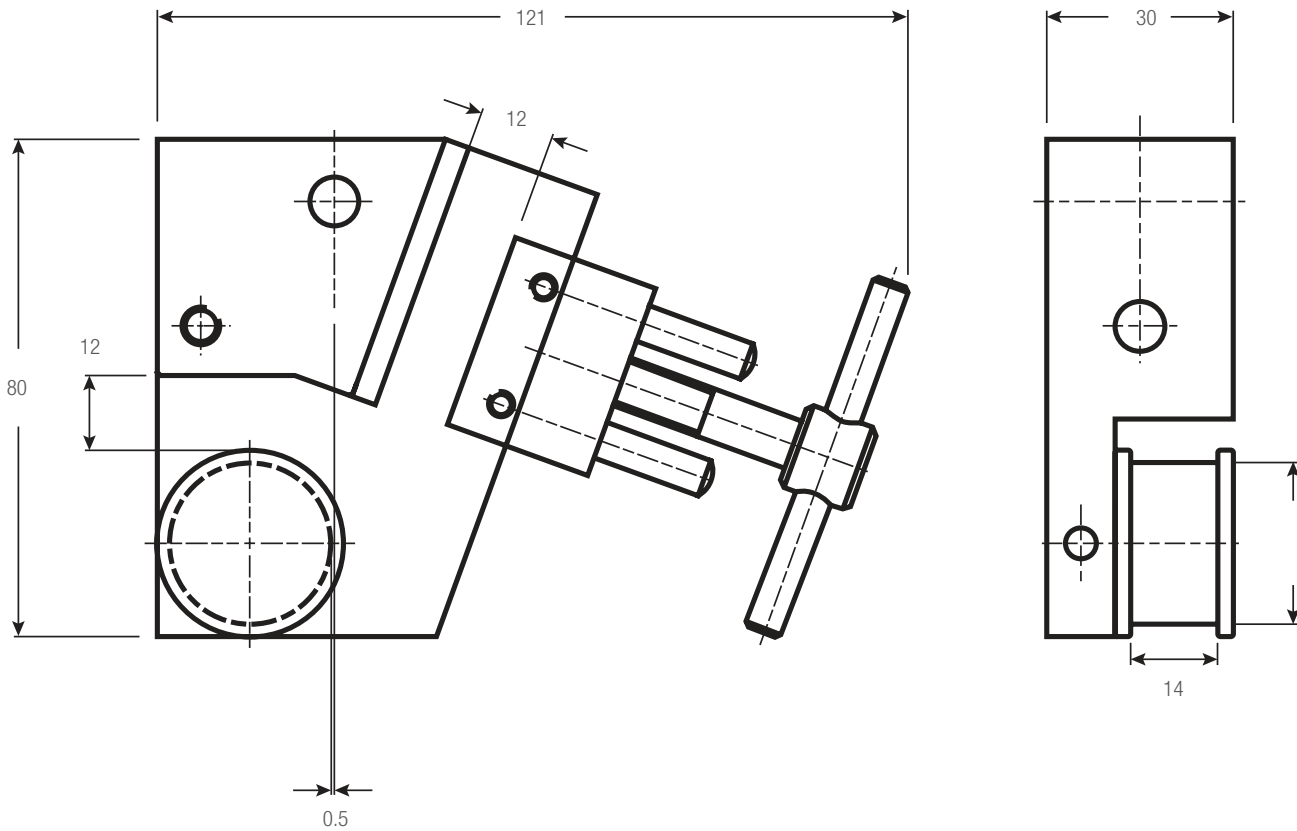
255

STEEL, NICKEL PLATED

- For general-purpose tensile testing applications
- Use on small diameter wire, rope, filaments, thread, etc.
- Operating Temperatures -94° to 662°F (-70° to 350°C)



DIMENSIONS



Rope Fixtures														
Model No.	Load Capacity			Jaw Face	Roller ϕ		Sample ϕ (Max)		Clamping Surface (h x w)		Weight (each)		Clevis Type	Supply
	N	KGF	LBF		in	mm	in	mm	in	mm	lbs	kgs		
ROPE-255-10-PY	10K	1,000	2,200	Serrated	1.02	26	0.2	5	0.75 x 1.25	19 x 32	2.0	0.9	15.9	2
ROPE-255-10-D	10K	1,000	2,200	Diamond	1.02	26	0.2	5	0.75 x 1.25	19 x 32	2.0	0.9	15.9	2

ROPE FIXTURES

170

STEEL, NICKEL PLATED

- For general-purpose tensile testing applications
- Use on small diameter wire, rope, filaments, thread, etc.
- Operating Temperatures 32° to 662°F (0° to 130°C)



Rope Fixtures

Model No.	Load Capacity			Jaw Face	Roller ϕ		Sample ϕ (Max)		Clamping Surface (h x w)		Weight (each)		Clevis Type	Supply
	N	KGf	LBF		in	mm	in	mm	in	mm	lbs	kgs		
ROPE-170-50	50K	5,000	11,000	Serrated	6.4	162	0.8	20	2.75 x 1.2	70 x 30	30.6	13.9	15.9	2

DIMENSIONS

