



PNEUMATIC FIXTURES

PNEUMATIC FIXTURES

Starrett pneumatic test fixtures use pneumatic actuation to open and close the jaws on the test fixture. Single and dual actuation are available for most test fixtures. These fixtures may be controlled using a handswitch or foot switch and are ideal for high-volume testing application. Accessories including an air compressor, tubing, regulator and switches are available.

OPERATION

Pneumatic-actuated test fixtures are ideal for high-volume testing. Air pressure is used to open and close the test fixture's jaws. The opening or closing of the jaws may be done using a foot switch kit or hand switch kit.

TESTING STANDARDS

There are a variety of testing standards that can be used with pneumatic-actuated test fixtures. Contact your Starrett representative for more information about your specific testing method and the available test fixtures.



Model No.	Load Capacity			Actuation	Jaw Opening Max
	N	KGF	LBF		
PNEUM-9+KO	2.5kN	250	562	Single	Jaw Dependant
PNEUM-9+2KO	2.5kN	250	562	Dual	Jaw Dependant
PNEUM-140K+KO	100	10	22	Single	Jaw Dependant
PNEUM-140K+2KO	100	10	22	Dual	Jaw Dependant
PNEUM-94A-1	200	20	45	Single	Jaw Dependant
PNEUM-229A-1	1kN	100	225	Single	Jaw Dependant
PNEUM-56KA-1	1,200	120	270	Single	Jaw Dependant
PNEUM-56K2KA-1	1,200	120	270	Dual	Jaw Dependant
PNEUM-56GKA-1	2.5kN	250	562	Single	Jaw Dependant
PNEUM-56G2KA-1	2.5kN	250	562	Dual	Jaw Dependant
PNEUM-56GHKA-1	2.5kN	250	562	Single	Jaw Dependant
PNEUM-56GH2KA-1	2.5kN	250	562	Dual	Jaw Dependant
PNEUM-240KA-1	2.5kN	250	562	Single	10 mm
PNEUM-2402KA-1	2.5kN	250	562	Dual	10 mm
PNEUM-240KA-20-1	1kN	100	225	Single	20 mm
PNEUM-2402KA-20-1	1kN	100	225	Dual	20 mm
PNEUM-240KA-30-1	1kN	100	225	Single	30 mm
PNEUM-2402KA-30-1	1kN	100	225	Dual	30 mm
PNEUM-240KA-50-1	1kN	100	225	Single	50 mm
PNEUM-2402KA-50-1	1kN	100	225	Dual	50 mm
PNEUM-240G+KO	2,600	260	585	Single	Jaw Dependant
PNEUM-240G+2KO	2,600	260	585	Dual	Jaw Dependant
PNEUM-83A-1	7kN	700	1,575	Single	Jaw Dependant
PNEUM-108A-1	3,500	350	785	Single	Jaw Dependant
PNEUM-126A-1	30kN	3,000	6,750	Single	Jaw Dependant
PNEUM-149A-1	2.4kN	240	540	Dual	Jaw Dependant
PNEUM-232A-1	16kN	1,600	3,600	Single	Jaw Dependant
PNEUM-22-S60	2,000	200	450	Dual	Jaw Dependant
PNEU-13G	5kN	500	1,124	Single	3 mm
PNEU-13G+BD	5kN	500	1,124	Single	3 mm
PNEU-13K	200	20	45	Single	1 mm
PNEU-13K+BD	200	20	45	Single	1 mm
PNEU-13M	2kN	200	450	Single	2 mm
PNEU-13M-BD	2kN	200	450	Single	2 mm
PNEUM-501A-1	2,000	200	450	Dual	6mm
PNEUM-76-5+KO	5kN	500	1,124	Single	6mm

PNEUMATIC FIXTURES

9P

ALUMINUM, ANODIZED

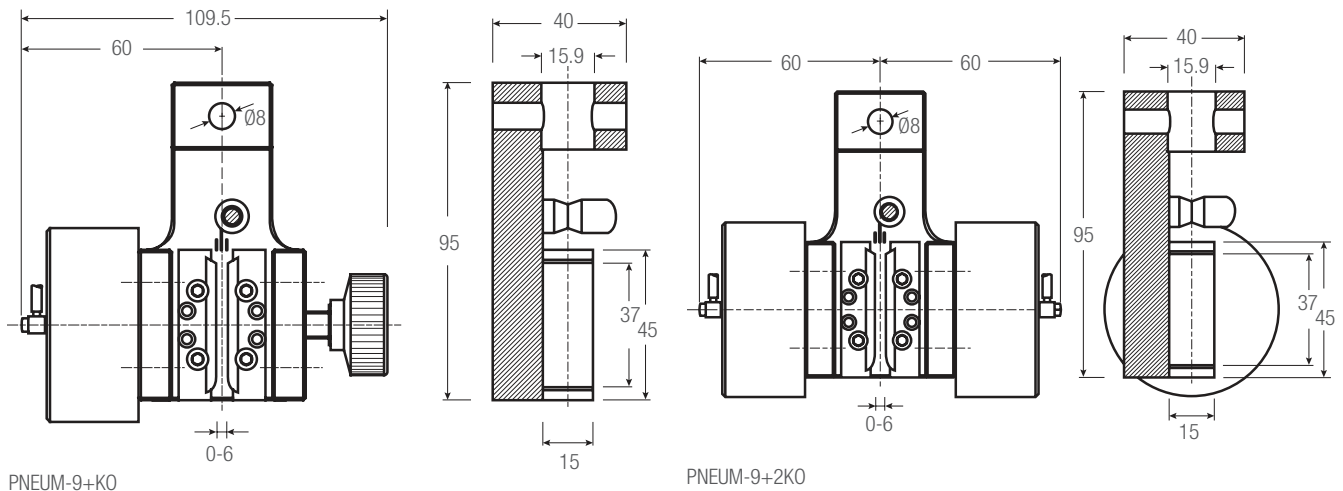
- Vise-action, general purpose test fixture for tensile applications
- Single and Dual actuation models
- Order required jaw set separately
- Operating Temperatures 32° to 158°F (0° to 70°C)



Dual pneumatic actuation

Pneumatic Fixtures													
Model No.	Load Capacity			Pneumatic Actuation	Jaw Face	Jaw Opening (Max)		Clamping Surface		Weight (each)		Clevis Type	Supply
	N	KGF	LBF			in	mm	in	mm	lbs	kgs		
PNEUM-9+KO	2,500	250	562	Single	No Jaws	Jaw Dependent		Jaw Dependent		1.2	0.56	15.9	2
PNEUM-9+2KO	2,500	250	562	Dual	No Jaws	Jaw Dependent		Jaw Dependent		1.6	0.74	15.9	2

DIMENSIONS

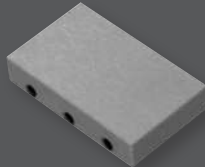


PNEUM-9+KO

PNEUM-9+2KO

SMOOTH JAW

- Suitable for own further treatments
- Steel-blanks without coating



DIAMOND-COATED JAW

- Clamping surface coated with synthetic diamonds
- Nickel-plated

9 JAW SETS

STEEL, HARDENED

- Supplied four (4) jaws per set
- Operating Temperatures 32° to 266°F (0° to 130°C)

Jaw Sets						
Model No.	Jaw Face	Jaw Opening (Max)		Clamping Surface		
		in	mm	in	mm	
JAW9-B15	Smooth	0.2	6	1.5 x 0.6	37 x 15	
JAW9-D15	Diamond	0.2	6	1.5 x 0.6	37 x 15	

PNEUMATIC FIXTURES

140P

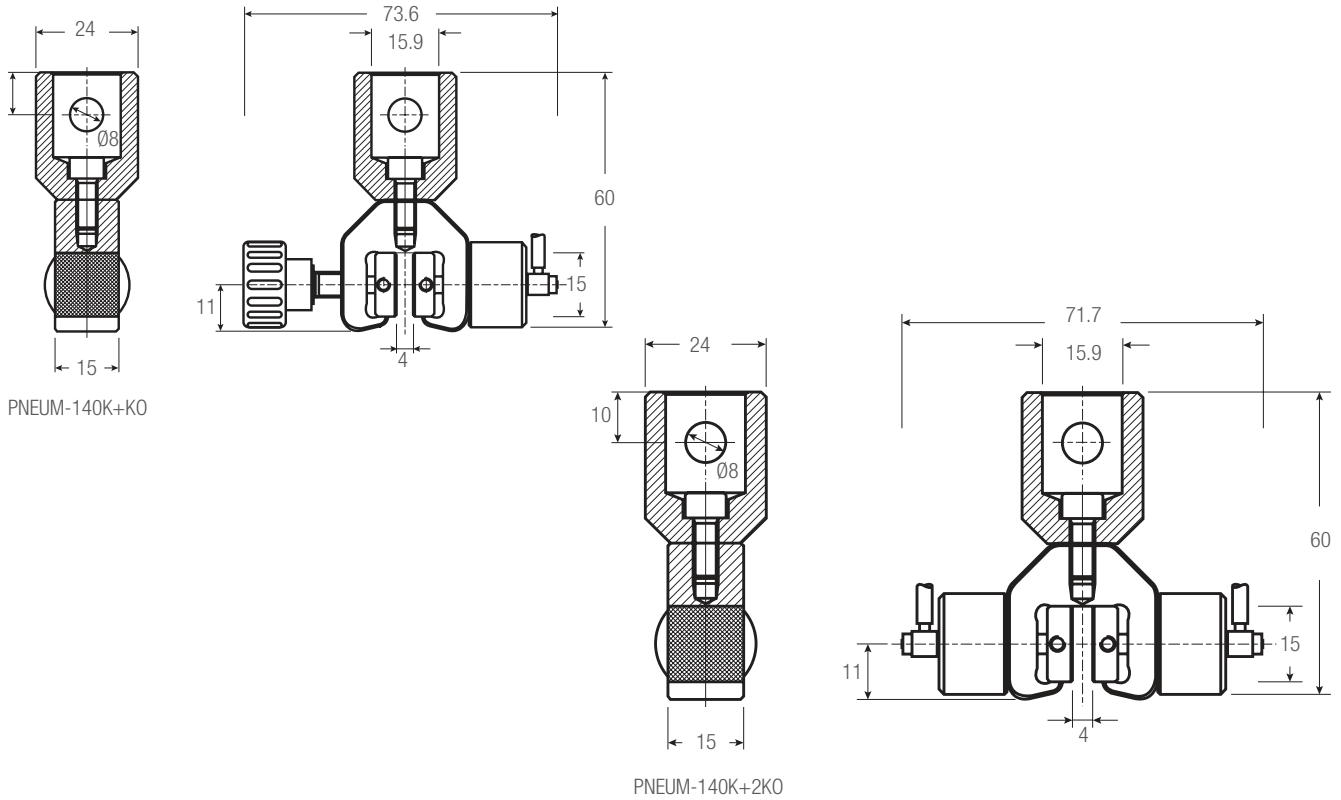
ALUMINUM, ANODIZED

- Vise-action, general purpose test fixture for tensile applications
- Single and Dual actuation models
- Operating Temperatures 32° to 158°F (0° to 70°C)



Pneumatic Fixtures													
Model No.	Load Capacity			Pneumatic Actuation	Jaw Face	Jaw Opening (Max)		Clamping Surface		Weight (each)		Clevis Type mm	Supply
	N	kgf	Lbf			in	mm	in	mm	lbs	kg		
PNEUM-140K+KO	100	10	22	Single	No Jaws	Jaw Dependent		Jaw Dependent		1.6	0.73	15.9	2
PNEUM-140K+2KO	100	10	22	Dual	No Jaws	Jaw Dependent		Jaw Dependent		2.1	0.94	15.9	2

DIMENSIONS

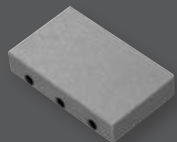


140 JAW SETS

STEEL, HARDENED

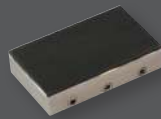
- Supplied four (4) jaws per set
- Operating Temperatures 32° to 266°F (0° to 130°C)

Jaw Sets					
Model No.	Jaw Face	Jaw Opening (Max)		Clamping Surface	
		in	mm	in	mm
JAW140-B	Smooth	0.3	8	0.6 x 0.6	15 x 15
JAW140-BR	Rubber	0.2	6	0.6 x 0.6	15 x 15
JAW140-PV	Serrated	0.3	8	0.6 x 0.6	15 x 15



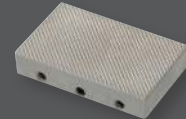
SMOOTH JAW

- Suitable for own further treatments
- Steel-blanks without coating



RUBBER-COATED JAW

- 1mm rubber coating (NBR)
- Nickel-plated



SERRATED JAW

- Pyramids 1.2 x 45°
- Hardened steel 58HRC
- Nickel-plated

PNEUMATIC FIXTURES

94P

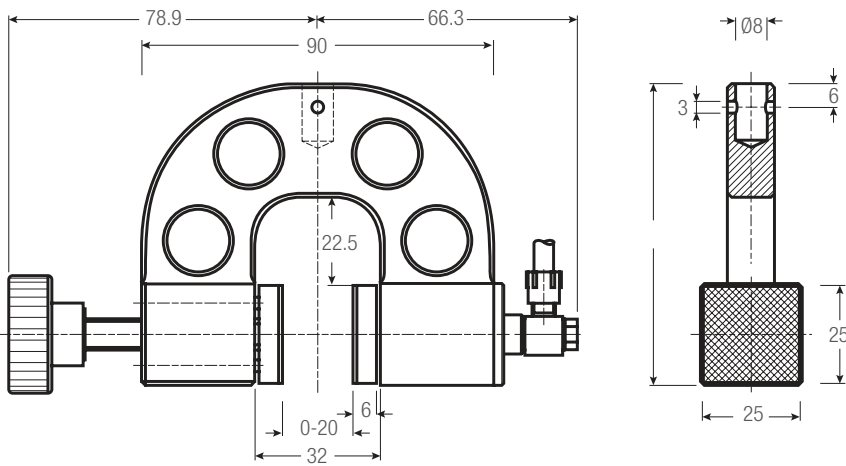
ALUMINUM, ANODIZED

- Vise-action, general purpose test fixture for tensile applications
- Single and Dual actuation models
- Operating Temperatures 32° to 158°F (0° to 70°C)



Pneumatic Fixtures													
Model No.	Load Capacity			Pneumatic Actuation	Jaw Face	Jaw Opening (Max)		Clamping Surface		Weight (each)		Clevis Type	Supply
	N	KGf	LBF			in	mm	in	mm	lbs	kgs		
PNEUM-94A-1	200	20	45	Single	No Jaws	Jaw Dependent	Jaw Dependent	Jaw Dependent	Jaw Dependent	0.5	0.24	15.9	2

DIMENSIONS



Note: Supplied with 15.9 clevis adapter

94 JAW SETS

STEEL, HARDENED

- Supplied four (4) jaws per set
- Operating Temperatures 32° to 266°F (0° to 130°C)

Jaw Sets					
Model No.	Jaw Face	Jaw Opening (Max)		Clamping Surface	
		in	mm	in	mm
JAW94-B25	Smooth	0.8	20	0.98 x 0.98	25 x 25
JAW94-BR25	Rubber	0.7	18	0.98 x 0.98	25 x 25
JAW94-PY25	Serrated	0.8	20	0.98 x 0.98	25 x 25
JAW94-D25	Diamond	0.8	20	0.98 x 0.98	25 x 25
JAW94-B50	Smooth	0.8	20	0.98 x 1.97	25 x 50
JAW94-BR50	Rubber	0.7	18	0.98 x 1.97	25 x 50
JAW94-PY50	Serrated	0.8	20	0.98 x 1.97	25 x 50
JAW94-WV50	Wave	0.63	16	0.98 x 1.97	25 x 50
JAW94-D50	Diamond	0.8	20	0.98 x 1.97	25 x 50

SMOOTH JAW

- Suitable for own further treatments
- Steel-blanks without coating

RUBBER-COATED JAW

- 1mm rubber coating (NBR)
- Nickel-plated

SERRATED JAW

- Pyramids 1.2 x 45°
- Hardened steel 58HRC
- Nickel-plated

WAVE JAW

- For flexible materials
- Wave 5mm
- Hardened steel 58HRC
- Nickel-plated

DIAMOND-COATED JAW

- Clamping surface coated with synthetic diamonds
- Nickel-plated

PNEUMATIC FIXTURES

229P

ALUMINUM, ANODIZED

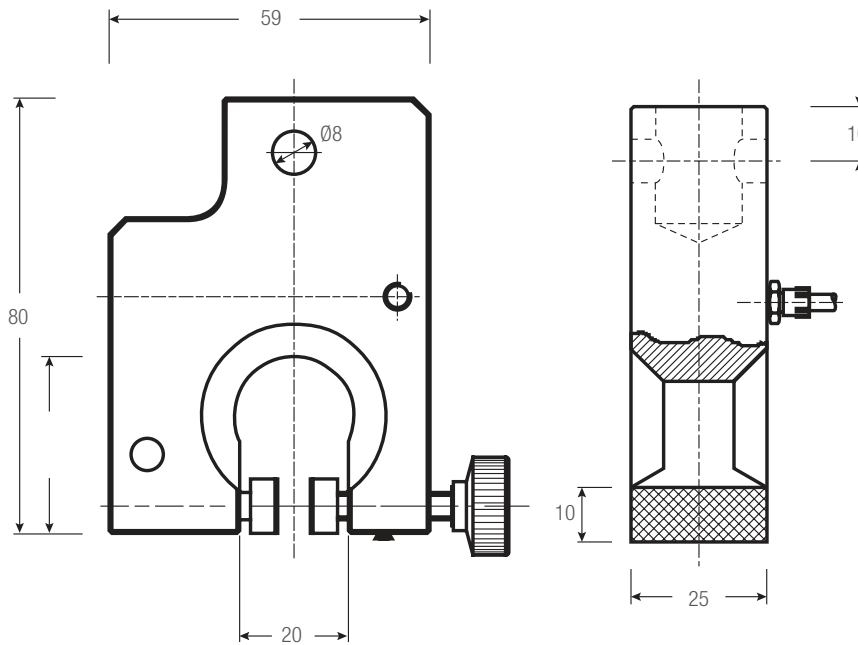
- Vise-action, general purpose test fixture for tensile applications
- Single and Dual actuation models
- Operating Temperatures 32° to 158°F (0° to 70°C)



Pneumatic Fixtures

Model No.	Load Capacity			Pneumatic Actuation	Jaw Face	Jaw Opening (Max)		Clamping Surface		Weight (each)		Clevis Type	Supply
	N	KGf	LBF			in	mm	in	mm	lbs	kgs		
PNEUM-229A-1	1,000	100	225	Single	No Jaws	Jaw Dependent		Jaw Dependent		0.6	0.25	15.9	2

DIMENSIONS



229 JAW SETS

STEEL, HARDENED

- Supplied four (4) jaws per set
- Operating Temperatures 32° to 266°F (0° to 130°C)

Jaw Sets

Model No.	Jaw Face	Jaw Opening (Max)		Clamping Surface	
		in	mm	in	mm
JAW229-B25	Smooth	0.3	8	0.4 x 0.98	10 x 25
JAW229-BR25	Rubber	0.2	6	0.4 x 0.98	10 x 25
JAW229-PY25	Serrated	0.3	8	0.4 x 0.98	10 x 25
JAW229-D25	Diamond	0.3	8	0.4 x 0.98	10 x 25
JAW229-B50	Smooth	0.2	6	0.4 x 1.97	10 x 50
JAW229-BR50	Rubber	0.15	4	0.4 x 1.97	10 x 50
JAW229-PY50	Serrated	0.2	6	0.4 x 1.97	10 x 50
JAW229-D50	Diamond	0.2	6	0.4 x 1.97	10 x 50
JAW229-B100	Smooth	0.2	6	0.4 x 3.94	10 x 100
JAW229-BR100	Rubber	0.15	4	0.4 x 3.94	10 x 100
JAW229-PY100	Serrated	0.2	6	0.4 x 3.94	10 x 100
JAW229-D100	Diamond	0.2	6	0.98 x 1.97	10 x 100

SMOOTH JAW

- Suitable for own further treatments
- Steel-blanks without coating

RUBBER-COATED JAW

- 1mm rubber coating (NBR)
- Nickel-plated

SERRATED JAW

- Pyramids 1.2 x 45°
- Hardened steel 58HRC
- Nickel-plated

DIAMOND-COATED JAW

- Clamping surface coated with synthetic diamonds
- Nickel-plated

PNEUMATIC FIXTURES

56KP

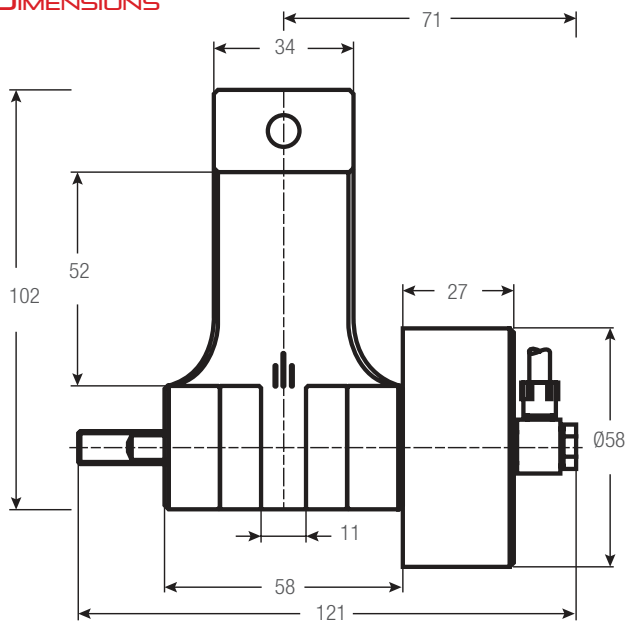
ALUMINUM, ANODIZED

- For general-purpose tensile testing applications
- Dual-action tightening from both sides
- Order required jaw set separately
- Operating Temperatures 32° to 158°F (0° to 70°C)

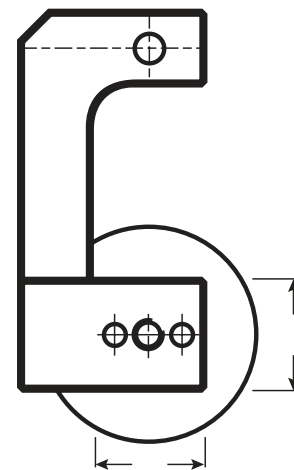
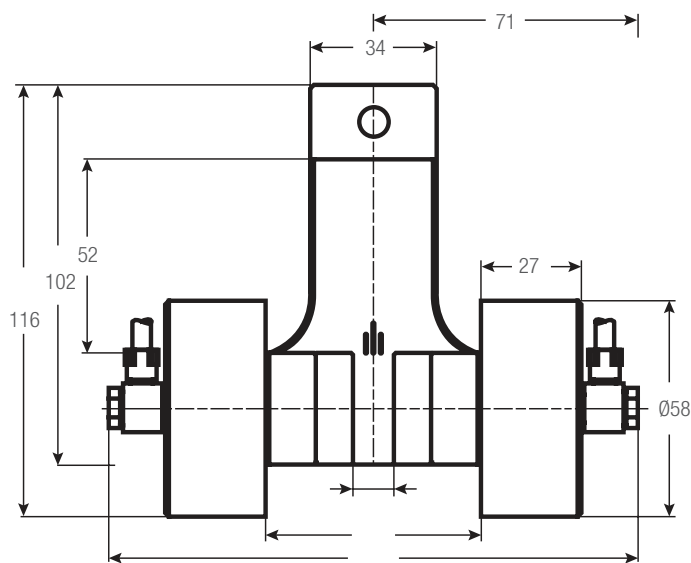
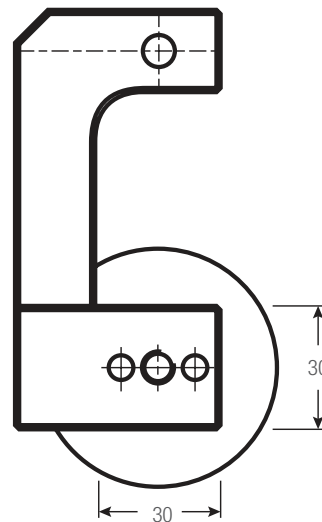


Pneumatic Fixtures													
Model No.	Load Capacity			Pneumatic Actuation	Jaw Face	Jaw Opening (Max)		Clamping Surface		Weight (each)		Clevis Type	Supply
	N	KGF	LBF			in	mm	in	mm	lbs	kg		
PNEUM-56KA-1	1,200	120	265	Single	No Jaws	Jaw Dependent		Jaw Dependent		2.2	1.0	15.9	2
PNEUM-56K2KA-1	1,200	120	265	Dual	No Jaws	Jaw Dependent		Jaw Dependent		3.1	1.4	15.9	2

DIMENSIONS



PNEUM-56KA-1



PNEUMATIC FIXTURES

56K JAW SETS

STEEL, HARDENED

- Supplied four (4) jaws per set
- Operating Temperatures 32° to 266°F (0° to 130°C)

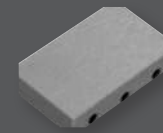
Jaw Sets					
Model No.	Jaw Face	Jaw Opening (Max)		Clamping Surface	
		in	mm	in	mm
JAW56K-B30	Smooth	0.4	10	1.18 x 1.18	30 x 30
JAW56K-BR30	Rubber	0.2	8	1.18 x 1.18	30 x 30
JAW56K-PY30	Serrated	0.4	10	1.18 x 1.18	30 x 30
JAW56K-V2	V-notch	0.08-0.4 \emptyset	2-10 \emptyset	1.18 x 1.18	30 x 30
JAW56K-V3	V-notch	0.12-0.4 \emptyset	3-10 \emptyset	1.18 x 1.18	30 x 30
JAW56K-WV30	Wave	0.4	10	1.18 x 1.18	30 x 30
JAW56K-D30	Diamond	0.4	10	1.18 x 1.18	30 x 30

OPTIONAL CARRIER AND CARRIER SETS

STEEL, HARDENED

- Supplied four (4) jaws per set
- Operating Temperatures 32° to 266°F (0° to 130°C)
- Quick Change jaw sets requires both CARRIER-56K and CAR56K

Carrier Sets							
Model No.	Material	Face	Jaw Dimensions (h x w)		Opening Width (h x w)		Supply each
			in	mm	in	mm	
CARRIER-56K	Steel	-	-	-	-	-	4
CAR56K-B36	Steel	Smooth	1.18 x 1.18	30 x 30	0 - 0.3	0 - 8	4
CAR56K-BR36	Steel	Rubber	1.18 x 1.18	30 x 30	0 - 0.2	0 - 6	4
CAR56K-D36	Steel	Diamond	1.18 x 1.18	30 x 30	0 - 0.3	0 - 8	4
CAR56K-PY36	Steel	Serrated	1.18 x 1.18	30 x 30	0 - 0.3	0 - 8	4



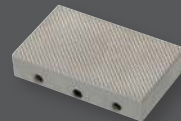
SMOOTH JAW

- Suitable for own further treatments
- Steel-blanks without coating



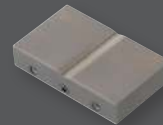
RUBBER-COATED JAW

- 1mm rubber coating (NBR)
- Nickel-plated



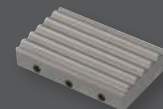
SERRATED JAW

- Pyramids 1.2 x 45°
- Hardened steel 58HRC
- Nickel-plated



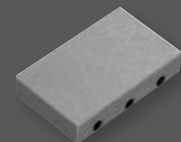
V-NOTCH JAW

- For all kinds of round samples
- Tooth pitch 1.2 mm
- Hardened steel
- Nickel-plated



WAVE JAW

- For flexible materials
- Wave 5mm
- Hardened steel 58HRC
- Nickel-plated



DIAMOND-COATED JAW

- Clamping surface coated with synthetic diamonds
- D91 (170/200 mesh)
- Nickel-plated

PNEUMATIC FIXTURES

56GP

ALUMINUM, ANODIZED

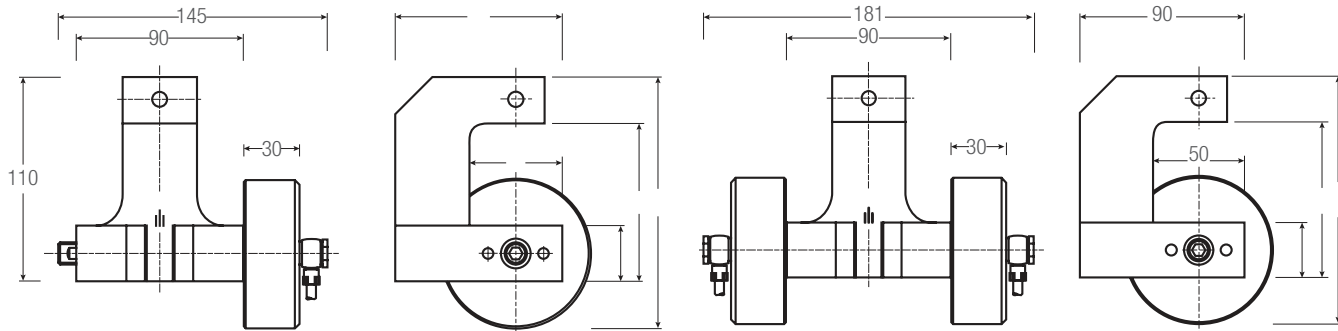
- For general-purpose tensile testing applications
- Dual-action tightening from both sides
- Order required jaw set separately
- Operating Temperatures 32° to 158°F (0° to 70°C)



PNEUMATIC FIXTURES

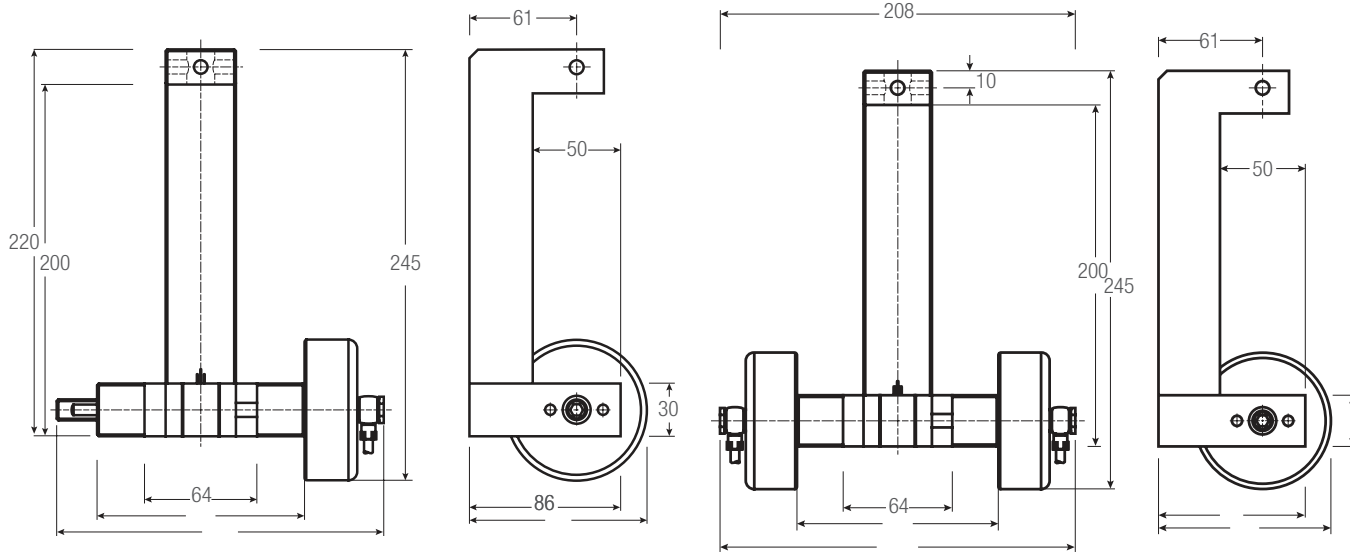
Model No.	Load Capacity			Pneumatic Actuation	Jaw Face	Jaw Opening (Max)		Clamping Surface		Weight (each)		Clevis Type	Supply
	N	KGF	LBF			in	mm	in	mm	lbs	kgs		
PNEUM-56GKA-1	2,500	250	550	Single	No Jaws	Jaw Dependent	Jaw Dependent	Jaw Dependent	Jaw Dependent	1.5	15.9	2	
PNEUM-56G2KA-1	2,500	250	550	Dual	No Jaws	Jaw Dependent	Jaw Dependent	Jaw Dependent	Jaw Dependent	1.9	15.9	2	
PNEUM-56GHKA-1	2,500	250	550	Single	No Jaws	Jaw Dependent	Jaw Dependent	Jaw Dependent	Jaw Dependent	1.9	15.9	2	
PNEUM-56GH2KA-1	2,500	250	550	Dual	No Jaws	Jaw Dependent	Jaw Dependent	Jaw Dependent	Jaw Dependent	2.3	15.9	2	

DIMENSIONS



PNEUM-56GKA-1

PNEUM-56G2KA-1



PNEUM-56GHKA-1

PNEUM-56GH2KA-1

PNEUMATIC FIXTURES

56G JAW SETS

STEEL, HARDENED

- Supplied four (4) jaws per set
- Operating Temperatures 32° to 266°F (0° to 130°C)

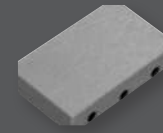
Jaw Sets					
Model No.	Jaw Face	Jaw Opening (Max)		Clamping Surface	
		in	mm	in	mm
JAW56G-B30	Smooth	0.6	15	1.18 x 1.97	30 x 50
JAW56G-BR30	Rubber	0.5	13	1.18 x 1.97	30 x 50
JAW56G-PY30	Serrated	0.6	15	1.18 x 1.97	30 x 50
JAW56G-V2	V-Notch	0.08-0.6 \emptyset	2-15 \emptyset	1.18 x 1.97	30 x 50
JAW56G-V3	V-Notch	0.12-0.4 \emptyset	3-11 \emptyset	1.18 x 1.97	30 x 50
JAW56G-WV30	Wave	0.6	15	1.18 x 1.97	30 x 50
JAW56G-D30	Diamond	0.6	15	1.18 x 1.97	30 x 50

OPTIONAL CARRIER AND CARRIER SETS

STEEL, HARDENED

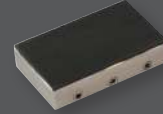
- Supplied four (4) jaws per set
- Operating Temperatures 32° to 266°F (0° to 130°C)
- Quick Change jaw sets require both CARRIER56K and CAR56K

Carrier Sets									
Model No.	Material	Face	Jaw Dimensions (h x w)		Opening Width		Opening Width		Supply each
			in	mm	in (h x w)	mm (GA-1)	in (h x w)	mm (GHA-1)	
CARRIER-56G	Steel	-	-	-	-	-	-	-	4
CAR56G-B50	Steel	Smooth	1.18 x 1.97	30 x 50	0 - 0.2	0 - 5	0 - 1.3	0 - 34	4
CAR56G-BR50	Steel	Rubber	1.18 x 1.97	30 x 50	0 - 0.1	0 - 3	0 - 1.2	0 - 32	4
CAR56G-D50	Steel	Diamond	1.18 x 1.97	30 x 50	0 - 0.2	0 - 5	0 - 1.3	0 - 34	4
CAR56G-PY50	Steel	Serrated	1.18 x 1.97	30 x 50	0 - 0.2	0 - 5	0 - 1.3	0 - 34	4



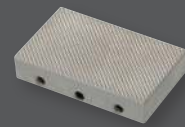
SMOOTH JAW

- Suitable for own further treatments
- Steel-blanks without coating



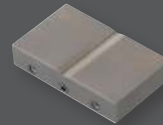
RUBBER-COATED JAW

- 1mm rubber coating (NBR)
- Nickel-plated



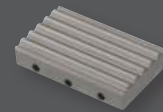
SERRATED JAW

- Pyramids 1.2 x 45°
- Hardened steel 58HRC
- Nickel-plated



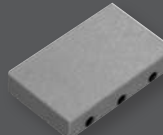
V-NOTCH JAW

- For all kinds of round samples
- Tooth pitch 1.2 mm
- Hardened steel
- Nickel-plated



WAVE JAW

- For flexible materials
- Wave 5mm
- Hardened steel 58HRC
- Nickel-plated



DIAMOND-COATED JAW

- Clamping surface coated with synthetic diamonds
- D91 (170/200 mesh)
- Nickel-plated

PNEUMATIC FIXTURES

240KP

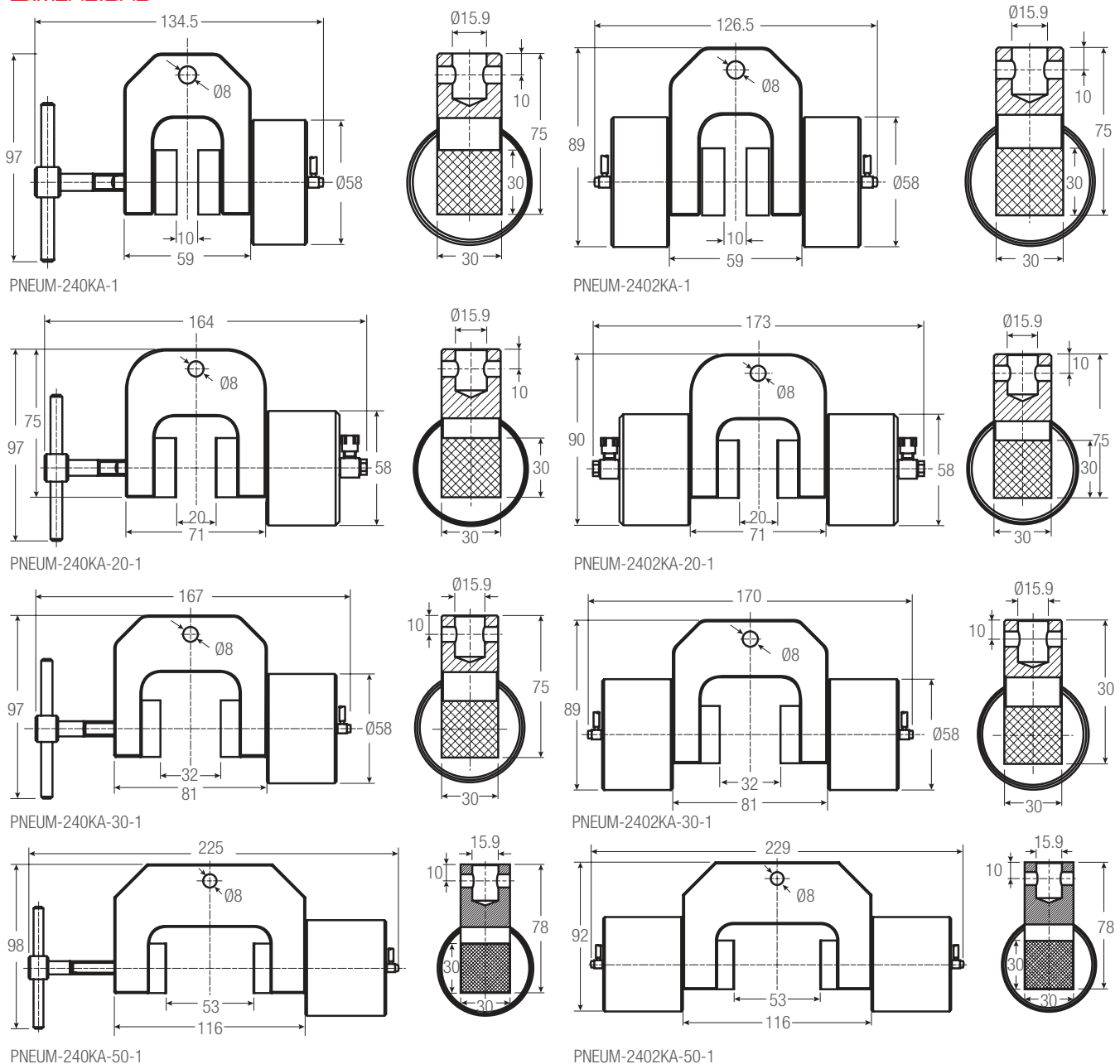
ALUMINUM, ANODIZED

- For general-purpose tensile testing applications
- Self-aligning, self-tightening
- Order required jaw set separately
- Operating Temperatures 32° to 158°F (0° to 70°C)



Model No.	Load Capacity			Pneumatic Actuation	Jaw Face	Jaw Opening (Max)		Clamping Surface		Weight (each)		Clevis Type	
	N	KGF	LBF			in	mm	in	mm	lbs	kgs	mm	Supply
PNEUM-240KA-1	2.5kN	250	562	Single	No Jaws	~.4	~10	Jaw Dependent		0.9	0.4	15.9	2
PNEUM-2402KA-1	2.5kN	250	562	Dual	No Jaws	~.4	~10	Jaw Dependent		1.3	0.6	15.9	2
PNEUM-240KA-20-1	1kN	100	225	Single	No Jaws	~.75	~20	Jaw Dependent		1.1	0.5	15.9	2
PNEUM-2402KA-20-1	1kN	100	225	Dual	No Jaws	~.75	~20	Jaw Dependent		1.54	0.7	15.9	2
PNEUM-240KA-30-1	1kN	100	225	Single	No Jaws	~1.2	~30	Jaw Dependent		1.2	0.54	15.9	2
PNEUM-2402KA-30-1	1kN	100	225	Dual	No Jaws	~1.2	~30	Jaw Dependent		1.6	0.74	15.9	2
PNEUM-240KA-50-1	1kN	100	225	Single	No Jaws	~2	~50	Jaw Dependent		1.8	0.8	15.9	2
PNEUM-2402KA-50-1	1kN	100	225	Dual	No Jaws	~2	~50	Jaw Dependent		2.2	1.0	15.9	2

DIMENSIONS



PNEUMATIC FIXTURES

240K JAW SETS

STEEL, HARDENED

- Supplied four (4) jaws per set
- Operating Temperatures 32° to 266°F (0° to 180°C)

Jaw Sets	Jaw Face	Jaw Opening (Max)								Clamping Surface	
		VISE-240KA-1		VISE-240KA-20-1		VISE-240KA-30-1		VISE-240KA-50-1		in	mm
Model No.	Jaw Face	in	mm	in	mm	in	mm	in	mm	in	mm
JAW240K-B25	Smooth	0.4	10	0.8	20	1.2	30	2.0	52	1.18 x 1.18	30 x 30
JAW240K-BR25	Rubber	0.3	8	0.7	18	1.1	28	2.0	50	1.18 x 1.18	30 x 30
JAW240K-PY25	Serrated	0.4	10	0.8	20	1.2	30	2.0	52	1.18 x 1.18	30 x 30
JAW240K-V2	V-Notch	0.08-0.35 ϕ	2-9 ϕ	0.08-0.8 ϕ	2-20 ϕ	0.08-1.2 ϕ	2-30 ϕ	0.08-2.05 ϕ	2-52 ϕ	1.18 x 1.18	30 x 30
JAW240K-V9	V-Notch	0.1-0.35 ϕ	3-9 ϕ	0.1-0.8 ϕ	3-20 ϕ	0.1-1.2 ϕ	3-30 ϕ	0.1-2.05 ϕ	3-52 ϕ	1.18 x 1.18	30 x 30
JAW240K-WV30	Wave	0.4	10	0.8	20	1.2	30	2.0	52	1.18 x 1.18	30 x 30
JAW240K-D30	Diamond	0.4	10	0.8	20	1.2	30	2.0	52	1.18 x 1.18	30 x 30
JAW240K-B50	Smooth	0.8	20	0.8	20	1.2	30	2.0	52	1.18 x 2	30 x 50
JAW240K-BR50	Rubber	0.7	18	0.7	18	1.1	28	2.0	50	1.18 x 2	30 x 50
JAW240K-PY50	Serrated	0.8	20	0.8	20	1.2	30	2.0	52	1.18 x 2	30 x 50
JAW240K-WV50	Wave	0.8	20	0.8	20	1.2	30	2.0	52	1.18 x 2	30 x 50
JAW240K-D50	Diamond	0.8	20	0.8	20	1.2	30	2.0	52	1.18 x 2	30 x 50
JAW240K-B80	Smooth	1.2	30	0.8	20	1.2	30	2.0	52	1.18 x 3.2	30 x 80
JAW240K-BR80	Rubber	1.1	28	0.7	18	1.1	28	2.0	50	1.18 x 3.2	30 x 80
JAW240K-PY80	Serrated	1.2	30	0.8	20	1.2	30	2.0	52	1.18 x 3.2	30 x 80
JAW240K-WV80	Wave	1.2	30	0.8	20	1.2	30	2.0	52	1.18 x 3.2	30 x 80
JAW240K-D80	Diamond	1.2	30	0.8	20	1.2	30	2.0	52	1.18 x 3.2	30 x 80
JAW240K-B100	Smooth	2	50	0.8	20	1.2	30	2.0	52	1.18 x 3.9	30 x 100
JAW240K-BR100	Rubber	1.9	48	0.7	18	1.1	28	2.0	50	1.18 x 3.9	30 x 100
JAW240K-PY100	Serrated	2	50	0.8	20	1.2	30	2.0	52	1.18 x 3.9	30 x 100
JAW240K-WV100	Wave	2	50	0.8	20	1.2	30	2.0	52	1.18 x 3.9	30 x 100
JAW240K-D100	Diamond	2	50	0.8	20	1.2	30	2.0	52	1.18 x 3.9	30 x 100

OPTIONAL CARRIER AND CARRIER SETS

STEEL, HARDENED

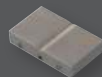
- Supplied four (4) jaws per set
- Operating Temperatures 32° to 266°F (0° to 130°C)
- Quick Change jsaw sets require both CARRIER56K and CAR56K

Carrier Sets													
Model No.	Material	Face	Jaw Dimensions (h x w)		Opening Width (KA-1)		Opening Width (KA-20-1)		Opening Width (KA-30-1)		Opening Width (KA-50-1)		Supply each
			in	mm	in	mm	in	mm	in	mm	in	mm	
CARRIER-240K	Steel	-	-	-	-	-	-	-	-	-	-	-	4
CAR240K-B36	Steel	Smooth	1.2 x 1.2	30 x 30	0 - 0.3	0 - 8	0 - 0.7	0 - 18	0 - 1.1	0 - 28	0 - 1.9	0 - 48	4
CAR240K-BR36	Steel	Rubber	1.2 x 1.2	30 x 30	0 - 0.2	0 - 6	0 - 0.6	0 - 16	0 - 1	0 - 26	0 - 1.8	0 - 46	4
CAR240K-D36	Steel	Diamond	1.2 x 1.2	30 x 30	0 - 0.3	0 - 8	0 - 0.7	0 - 18	0 - 1.1	0 - 28	0 - 1.9	0 - 48	4
CAR240K-PY36	Steel	Serrated	1.2 x 1.2	30 x 30	0 - 0.3	0 - 8	0 - 0.7	0 - 18	0 - 1.1	0 - 28	0 - 1.9	0 - 48	4



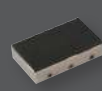
SMOOTH JAW

- Suitable for own further treatments
- Steel-blanks without coating



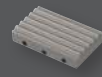
V-NOTCH JAW

- For all kinds of round samples
- Tooth pitch 1.2 mm
- Hardened steel
- Nickel-plated



RUBBER-COATED JAW

- 1mm rubber coating (NBR)
- Nickel-plated



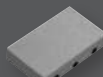
WAVE JAW

- For flexible materials
- Wave 5mm
- Hardened steel 58HRC
- Nickel-plated



SERRATED JAW

- Pyramids 1.2 x 45°
- Hardened steel 58HRC
- Nickel-plated



DIAMOND-COATED JAW

- Clamping surface coated with synthetic diamonds
- D91 (170/200 mesh)
- Nickel-plated

PNEUMATIC FIXTURES

240GP

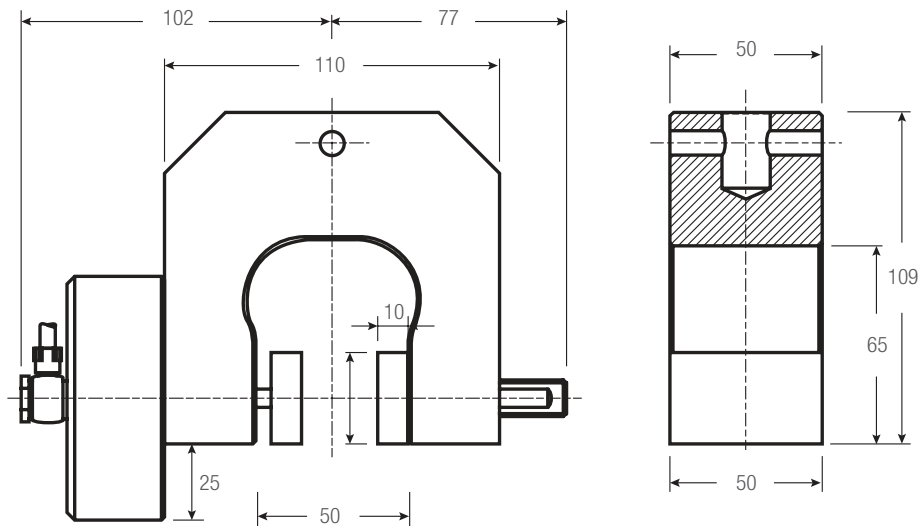
ALUMINUM, ANODIZED

- For general-purpose tensile testing applications
- Self-aligning, self-tightening
- Order required jaw set separately
- Operating Temperatures 32° to 158°F (0° to 70°C)

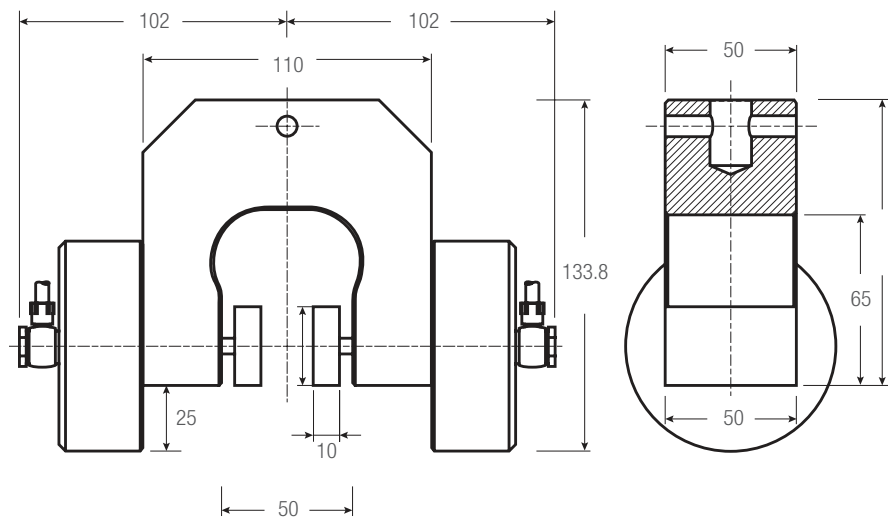


Pneumatic Fixtures													
Model No.	Load Capacity			Pneumatic Actuation	Jaw Face	Jaw Opening (Max)		Clamping Surface		Weight (each)		Clevis Type	Supply
	N	KGF	LBF			in	mm	in	mm	lbs	kgs		
PNEUM-240G+KO	2,600	260	585	Single	No Jaws	Jaw Dependent	Jaw Dependent	Jaw Dependent	Jaw Dependent	3.3	1.5	15.9	2
PNEUM-240G+2KO	2,600	260	585	Dual	No Jaws	Jaw Dependent	Jaw Dependent	Jaw Dependent	Jaw Dependent	5.1	2.3	15.9	2

DIMENSIONS



PNEUM-240G+KO



PNEUM-240G+2KO

PNEUMATIC FIXTURES

240G JAW SETS

STEEL, HARDENED

- Supplied four (4) jaws per set
- Operating Temperatures 32° to 266°F (0° to 180°C)

Jaw Sets

Model No.	Jaw Face	Jaw Opening (Max) PNEUM-240G		Clamping Surface	
		in	mm	in	mm
JAW240G-B50	Smooth	0.7	18	1.18 x 2	30 x 50
JAW240G-BR50	Rubber	0.6	16	1.18 x 2	30 x 50
JAW240G-PY50	Serrated	0.7	18	1.18 x 2	30 x 50
JAW240G-V2	V-Notch	0.08-0.7 ϕ	2-18 ϕ	1.18 x 2	30 x 50
JAW240G-V5	V-Notch	0.2-0.7 ϕ	5-18 ϕ	1.18 x 2	30 x 50
JAW240G-WV50	Wave	0.7	18	1.18 x 2	30 x 50
JAW240G-D50	Diamond	0.7	18	1.18 x 2	30 x 50
JAW240G-B80	Smooth	0.7	18	1.18 x 3.2	30 x 80
JAW240G-BR80	Rubber	0.0	1	1.18 x 3.2	30 x 80
JAW240G-PY80	Serrated	0.7	18	1.18 x 3.2	30 x 80
JAW240G-WV80	Wave	0.7	18	1.18 x 3.2	30 x 80
JAW240G-D80	Diamond	0.7	18	1.18 x 3.2	30 x 80
JAW240G-B100	Smooth	0.8	20	1.18 x 3.9	30 x 100
JAW240G-BR100	Rubber	0.7	18	1.18 x 3.9	30 x 100
JAW240G-PY100	Serrated	0.8	20	1.18 x 3.9	30 x 100
JAW240G-WV100	Wave	0.8	20	1.18 x 3.9	30 x 100
JAW240G-D100	Diamond	0.8	20	1.18 x 3.9	30 x 100

OPTIONAL CARRIER AND CARRIER SETS

STEEL, HARDENED

- Supplied four (4) jaws per set
- Operating Temperatures 32° to 266°F (0° to 130°C)
- Quick Change jsaw sets require both CARRIER240K and CAR240K

Carrier Sets

Model No.	Material	Face	Jaw Dimensions (h x w)		Opening Width (240G)		Supply each
			in	mm	in	mm	
CARRIER-240G	Steel	-	-	-	-	-	4
CAR240G-B50	Steel	Smooth	1.2 x 2.0	30 x 50	0 - 0.8	0 - 20	4
CAR240G-BR50	Steel	Rubber	1.2 x 2.0	30 x 50	0 - 0.7	0 - 18	4
CAR240G-D50	Steel	Diamond	1.2 x 2.0	30 x 50	0 - 0.8	0 - 20	4
CAR240G-PY50	Steel	Serrated	1.2 x 2.0	30 x 50	0 - 0.8	0 - 20	4

SMOOTH JAW

- Suitable for own further treatments
- Steel-blanks without coating

RUBBER-COATED JAW

- 1mm rubber coating (NBR)
- Nickel-plated

SERRATED JAW

- Pyramids 1.2 x 45°
- Hardened steel 58HRC
- Nickel-plated

V-NOTCH JAW

- For all kinds of round samples
- Tooth pitch 1.2 mm
- Hardened steel
- Nickel-plated

WAVE JAW

- For flexible materials
- Wave 5mm
- Hardened steel 58HRC
- Nickel-plated

DIAMOND-COATED JAW

- Clamping surface coated with synthetic diamonds
- D91 (170/200 mesh)
- Nickel-plated

PNEUMATIC FIXTURES

83A

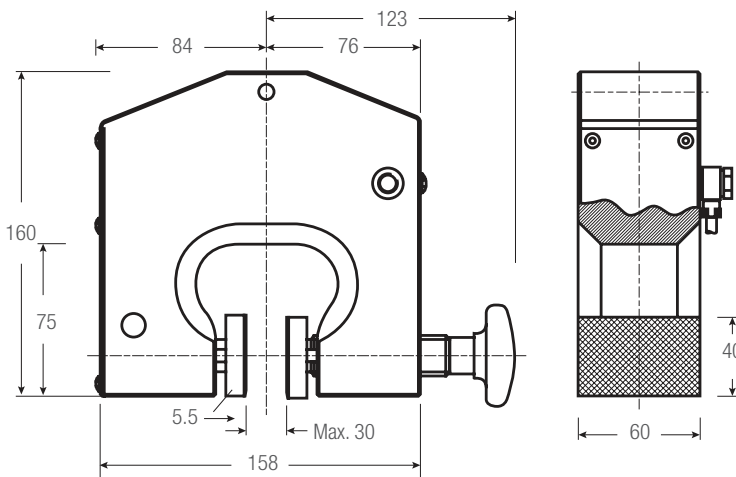
ALUMINUM, ANODIZED

- For general-purpose tensile testing applications
- Order required jaw set separately
- 1/8" pneumatic thread connection
- Operating Temperatures 32° to 158°F (0° to 70°C)



Pneumatic Fixtures													
Model No.	Load Capacity			Jaw Face	Jaw Opening (Max)		Clamping Surface		Weight (each)		Clevis Type	Supply	
	N	KGf	LBF		in	mm	in	mm	lbs	kgs			
PNEUM-83A-1	7,000	700	1,570	No Jaws	Jaw Dependent		Jaw Dependent		7.1	3.2	15.9	2	

DIMENSIONS



83P JAW SETS

STEEL, HARDENED

- Supplied four (4) jaws per set
- Operating Temperatures 32° to 158°F (0° to 70°C)

Jaw Sets					
Model No.	Jaw Face	Jaw Opening (Max)		Clamping Surface	
		in	mm	in	mm
JAW83-B60	Smooth	0.4	10	1.6 x 2.4	40 x 60
JAW83-BR60	Rubber	0.3	8	1.6 x 2.4	40 x 60
JAW83-PY60	Serrated	0.4	10	1.6 x 2.4	40 x 60
JAW83-V4	V-Notch	0.16-0.47 ϕ	4-12 ϕ	1.6 x 2.4	40 x 60
JAW83-V6	V-Notch	0.2-1.18 ϕ	6-30 ϕ	1.6 x 2.4	40 x 60
JAW83-WV60	Wave	0.4	10	1.6 x 2.4	40 x 60
JAW83-D60	Diamond	0.4	10	1.6 x 2.4	40 x 60
JAW83-B100	Smooth	0.4	10	1.6 x 3.9	40 x 100
JAW83-BR100	Rubber	0.3	8	1.6 x 3.9	40 x 100
JAW83-PY100	Serrated	0.4	10	1.6 x 3.9	40 x 100
JAW83-WV100	Wave	0.4	10	1.6 x 3.9	40 x 100
JAW83-D100	Diamond	0.4	10	1.6 x 3.9	40 x 100

SMOOTH JAW

- Suitable for own further treatments
- Steel-blanks without coating

RUBBER-COATED JAW

- 1mm rubber coating (NBR)
- Nickel-plated

SERRATED JAW

- Pyramids 1.2 x 45°
- Hardened steel 58HRC
- Nickel-plated

V-NOTCH JAW

- For all kinds of round samples
- Tooth pitch 1.2 mm
- Hardened steel
- Nickel-plated

WAVE JAW

- For flexible materials
- Wave 5mm
- Hardened steel 58HRC
- Nickel-plated

DIAMOND-COATED JAW

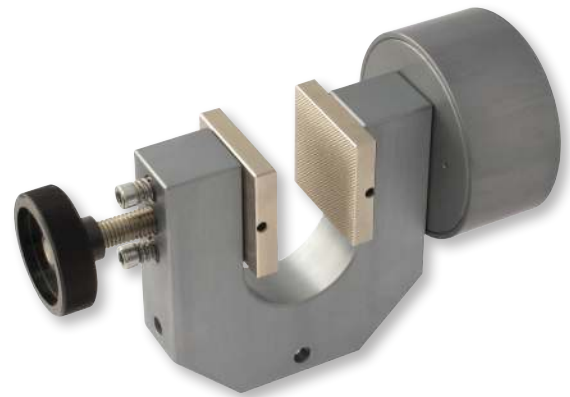
- Clamping surface coated with synthetic diamonds
- D91 (170/200 mesh)
- Nickel-plated

PNEUMATIC FIXTURES

108P

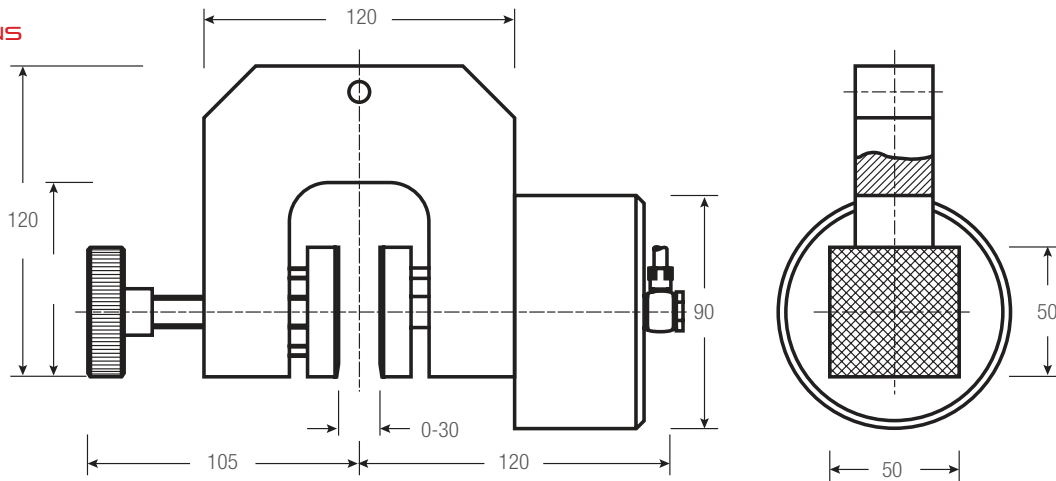
ALUMINUM, ANODIZED

- For general-purpose tensile testing applications
- Self-aligning, self-tightening
- Order required jaw set separately
- Operating Temperatures 32° to 158°F (0° to 70°C)



Pneumatic Fixtures												
Model No.	Load Capacity			Jaw Face	Jaw Opening (Max)		Clamping Surface		Weight (each)		Clevis Type mm	Supply
	N	KGF	LBF		in	mm	in	mm	lbs	kgs		
PNEUM-108A-1	3,500	350	785	No Jaws	Jaw Dependent		Jaw Dependent		2.9	1.3	15.9	2

DIMENSIONS



108P JAW SETS

STEEL, HARDENED

- Supplied four (4) jaws per set
- Operating Temperatures 32° to 158°F (0° to 70°C)

Jaw Sets					
Model No.	Jaw Face	Jaw Opening (Max)		Clamping Surface	
		in	mm	in	mm
JAW108-B60	Smooth	1.34	34	1.97 x 1.97	50 x 50
JAW108-BR60	Rubber	1.26	32	1.97 x 1.97	50 x 50
JAW108-PY60	Serrated	1.34	34	1.97 x 1.97	50 x 50
JAW108-V4	V-Notch	0.16-1.18 ϕ	4-30 ϕ	1.97 x 1.97	50 x 50
JAW108-WV60	Wave	1.34	34	1.97 x 1.97	50 x 50
JAW108-D60	Diamond	1.34	34	1.97 x 1.97	50 x 50
JAW108-B100	Smooth	1.34	34	1.97 x 3.9	50 x 100
JAW108-BR100	Rubber	1.26	32	1.97 x 3.9	50 x 100
JAW108-PY100	Serrated	1.34	34	1.97 x 3.9	50 x 100
JAW108-WV100	Wave	1.34	34	1.97 x 3.9	50 x 100
JAW108-D100	Diamond	1.34	34	1.97 x 3.9	50 x 100

SMOOTH JAW

- Suitable for own further treatments
- Steel-blanks without coating

RUBBER-COATED JAW

- 1mm rubber coating (NBR)
- Nickel-plated

SERRATED JAW

- Pyramids 1.2 x 45°
- Hardened steel 58HRC
- Nickel-plated

V-NOTCH JAW

- For all kinds of round samples
- Tooth pitch 1.2 mm
- Hardened steel
- Nickel-plated

WAVE JAW

- For flexible materials
- Wave 5mm
- Hardened steel 58HRC
- Nickel-plated

DIAMOND-COATED JAW

- Clamping surface coated with synthetic diamonds
- D91 (170/200 mesh)
- Nickel-plated

PNEUMATIC FIXTURES

126P

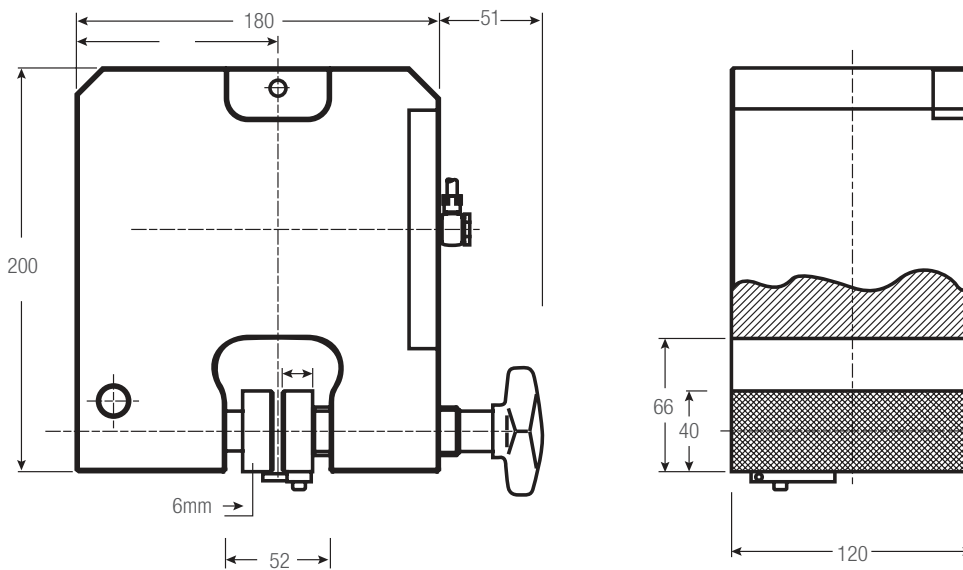
ALUMINUM, ANODIZED

- For general-purpose tensile testing applications
- Self-aligning, self-tightening
- Order required jaw set separately
- 1/8" pneumatic thread connection
- Operating Temperatures 32° to 158°F (0° to 70°C)



Pneumatic Fixtures													
Model No.	Load Capacity			Jaw Face	Jaw Opening (Max)		Clamping Surface		Weight (each)		Clevis Type	Supply	
	N	KGF	LBF		in	mm	in	mm	lbs	kgs			mm
PNEUM-126A-1	30K	3,000	6,700	No Jaws	Jaw Dependent	Jaw Dependent			22	10	15.9	2	

DIMENSIONS



126P JAW SETS

STEEL, HARDENED

- Supplied four (4) jaws per set
- Operating Temperatures 32° to 158°F (0° to 70°C)

Jaw Sets					
Model No.	Jaw Face	Jaw Opening (Max)		Clamping Surface	
		in	mm	in	mm
JAW126-B120	Smooth	0.5	12	1.6 x 4.7	40 x 120
JAW126-BR120	Rubber	0.4	10	1.6 x 4.7	40 x 120
JAW126-PY120	Serrated	0.5	12	1.6 x 4.7	40 x 120
JAW126-V6	V-Notch	0.23-0.67 ϕ	6-17 ϕ	1.6 x 4.7	40 x 120
JAW126-WV120	Wave	0.5	12	1.6 x 4.7	40 x 120
JAW126-D120	Diamond	0.5	12	1.6 x 4.7	40 x 120

SMOOTH JAW

- Suitable for own further treatments
- Steel-blanks without coating

RUBBER-COATED JAW

- 1mm rubber coating (NBR)
- Nickel-plated

SERRATED JAW

- Pyramids 1.2 x 45°
- Hardened steel 58HRC
- Nickel-plated

V-NOTCH JAW

- For all kinds of round samples
- Tooth pitch 1.2 mm
- Hardened steel
- Nickel-plated

WAVE JAW

- For flexible materials
- Wave 5mm
- Hardened steel 58HRC
- Nickel-plated

DIAMOND-COATED JAW

- Clamping surface coated with synthetic diamonds
- D91 (170/200 mesh)
- Nickel-plated

PNEUMATIC FIXTURES

149

ALUMINUM, ANODIZED

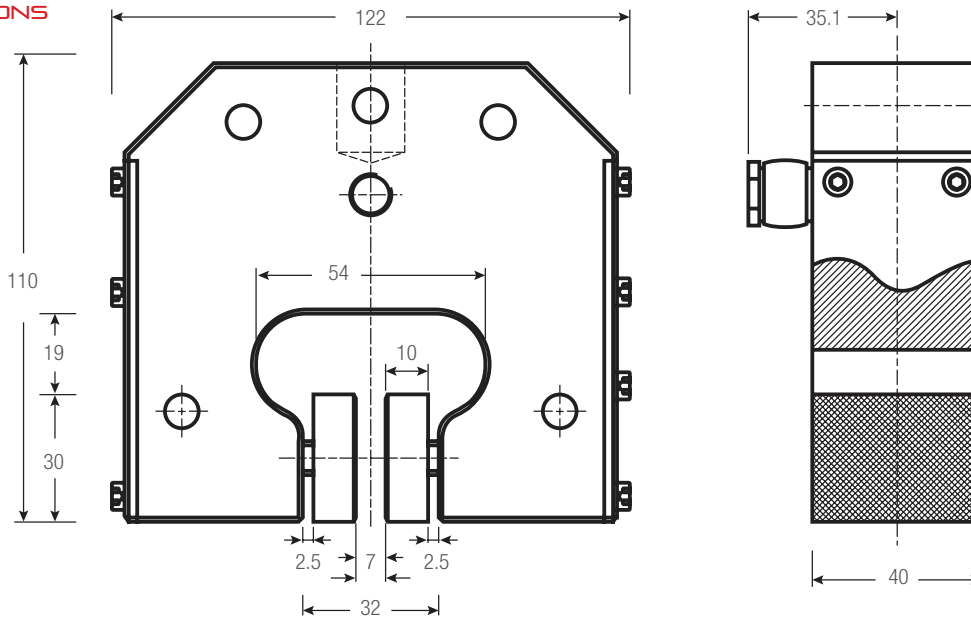
- For general-purpose tensile testing applications
- Self-aligning, self-tightening
- Order required jaw set separately
- 1/8" pneumatic thread connection
- Operating Temperatures 32° to 158°F (0° to 70°C)



Pneumatic Fixtures

Model No.	Load Capacity			Jaw Face	Jaw Opening (Max)		Clamping Surface		Weight (each)		Clevis Type	Supply
	N	KGF	LBF		in	mm	in	mm	lbs	kgs		
PNEUM-149A-1	2,400	240	540	No Jaws	Jaw Dependent		Jaw Dependent		2.7	1.2	15.9	2

DIMENSIONS



149 JAW SETS

STEEL, HARDENED

- Supplied four (4) jaws per set
- Operating Temperatures 32° to 158°F (0° to 70°C)

Jaw Sets

Model No.	Jaw Face	Jaw Opening (Max)		Clamping Surface	
		in	mm	in	mm
JAW149-B50	Smooth	0.28	7	1.2 x 1.97	30 x 50
JAW149-BR50	Rubber	0.2	5	1.2 x 1.97	30 x 50
JAW149-PY50	Serrated	0.28	7	1.2 x 1.97	30 x 50
JAW149-V4	V-Notch	0.16-0.28 ϕ	4-7 ϕ	1.2 x 1.97	30 x 50
JAW149-WV50	Wave	0.28	7	1.2 x 1.97	30 x 50
JAW149-D50	Diamond	0.28	7	1.2 x 1.97	30 x 50

SMOOTH JAW

- Suitable for own further treatments
- Steel-blanks without coating

RUBBER-COATED JAW

- 1mm rubber coating (NBR)
- Nickel-plated

SERRATED JAW

- Pyramids 1.2 x 45°
- Hardened steel 58HRC
- Nickel-plated

V-NOTCH JAW

- For all kinds of round samples
- Tooth pitch 1.2 mm
- Hardened steel
- Nickel-plated

WAVE JAW

- For flexible materials
- Wave 5mm
- Hardened steel 58HRC
- Nickel-plated

DIAMOND-COATED JAW

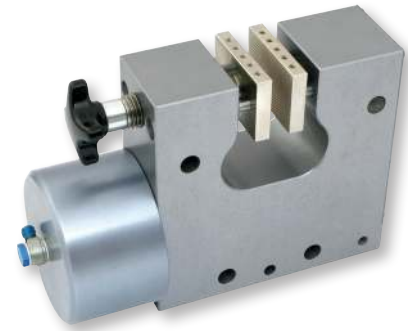
- Clamping surface coated with synthetic diamonds
- D91 (170/200 mesh)
- Nickel-plated

PNEUMATIC FIXTURES

232

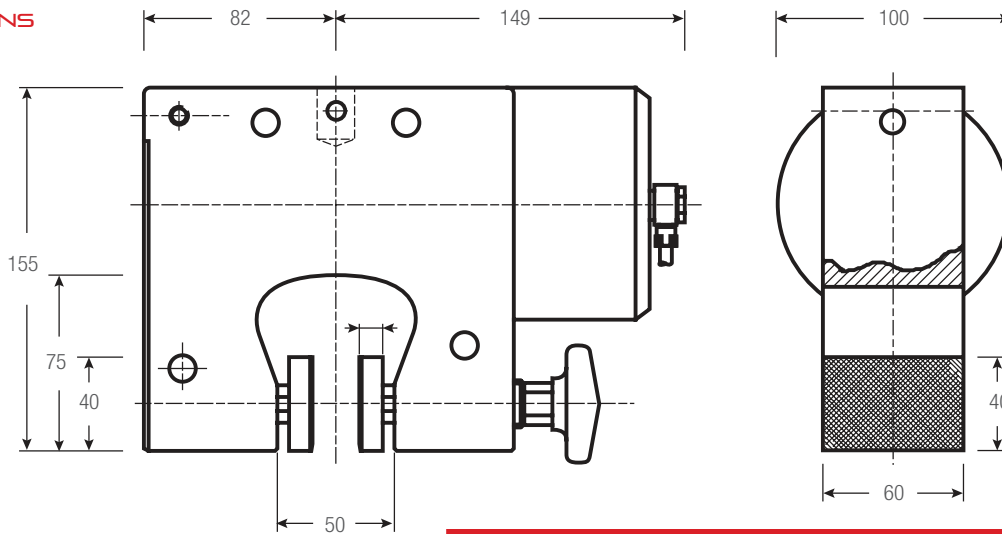
ALUMINUM, ANODIZED

- For general-purpose tensile testing applications
- Self-aligning, self-tightening
- Order required jaw set separately
- Operating Temperatures 32° to 158°F (0° to 70°C)



Pneumatic Fixtures												
Model No.	Load Capacity			Jaw Face	Jaw Opening (Max)		Clamping Surface		Weight (each)		Clevis Type	Supply
	N	KGF	LBF		in	mm	in	mm	lbs	kgs		
PNEUM-232A-1	16K	1,600	3,600	No Jaws	Jaw Dependent		Jaw Dependent		10.0	4.5	15.9	2

DIMENSIONS



232 JAW SETS

STEEL, HARDENED

- Supplied four (4) jaws per set
- Operating Temperatures 32° to 158°F (0° to 70°C)

Jaw Sets					
Model No.	Jaw Face	Jaw Opening (Max)		Clamping Surface	
		in	mm	in	mm
JAW232-B60	Smooth	0.4	10	1.6 x 2.4	40 x 60
JAW232-BR60	Rubber	0.4	10	1.6 x 2.4	40 x 60
JAW232-PY60	Serrated	0.4	10	1.6 x 2.4	40 x 60
JAW232-V4	V-Notch	0.16-0.47 ϕ	4-12 ϕ	1.6 x 2.4	40 x 60
JAW232-V6	V-Notch	0.24-1.18 ϕ	6-30 ϕ	1.6 x 2.4	40 x 60
JAW232-WV60	Wave	0.4	10	1.6 x 2.4	40 x 60
JAW232-D60	Diamond	0.4	10	1.6 x 2.4	40 x 60
JAW232-B100	Smooth	0.4	10	1.6 x 3.9	40 x 100
JAW232-BR100	Rubber	0.4	10	1.6 x 3.9	40 x 100
JAW232-PY100	Serrated	0.4	10	1.6 x 3.9	40 x 100
JAW232-WV100	Wave	0.4	10	1.6 x 3.9	40 x 100
JAW232-D100	Diamond	0.4	10	1.6 x 3.9	40 x 100

SMOOTH JAW

- Suitable for own further treatments
- Steel-blanks without coating

RUBBER-COATED JAW

- 1mm rubber coating (NBR)
- Nickel-plated

SERRATED JAW

- Pyramids 1.2 x 45°
- Hardened steel 58HRC
- Nickel-plated

V-NOTCH JAW

- For all kinds of round samples
- Tooth pitch 1.2 mm
- Hardened steel
- Nickel-plated

WAVE JAW

- For flexible materials
- Wave 5mm
- Hardened steel 58HRC
- Nickel-plated

DIAMOND-COATED JAW

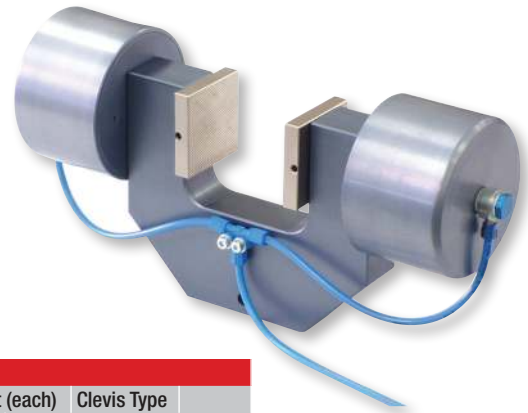
- Clamping surface coated with synthetic diamonds
- D91 (170/200 mesh)
- Nickel-plated

PNEUMATIC FIXTURES

22

ALUMINUM, ANODIZED

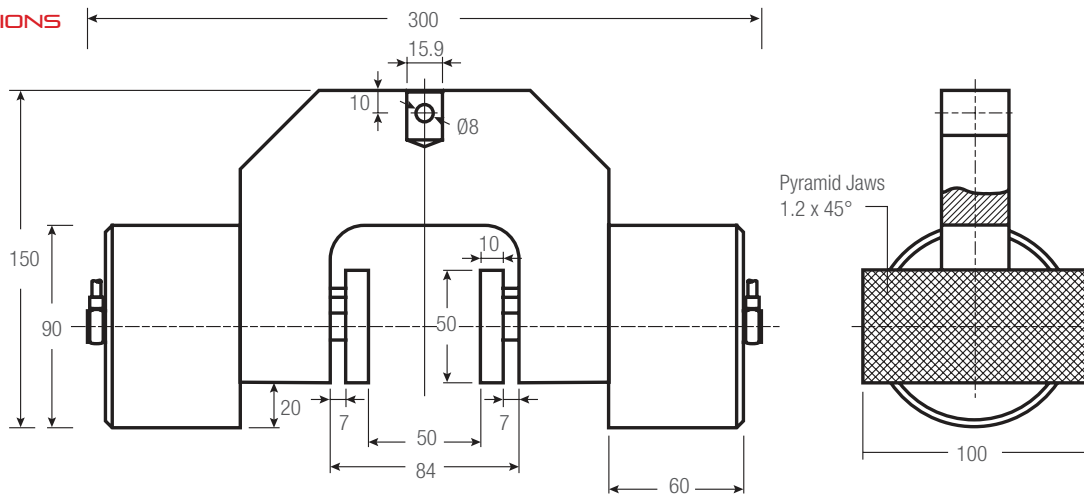
- For general-purpose tensile testing applications
- Self-aligning, self-tightening
- Order required jaw set separately
- Operating Temperatures 32° to 158°F (0° to 70°C)



Pneumatic Fixtures

Model No.	Load Capacity			Jaw Face	Jaw Opening (Max)		Clamping Surface		Weight (each)		Clevis Type	Supply
	N	KGF	LBF		in	mm	in	mm	lbs	kgs		
PNEUM-22-S60	2,000	200	450	No Jaws	Jaw Dependent	Jaw Dependent	Jaw Dependent	Jaw Dependent	5.7	2.6	15.9	2

DIMENSIONS



22 JAW SETS

STEEL, HARDENED

- Supplied four (4) jaws per set
- Operating Temperatures 32° to 158°F (0° to 70°C)

Jaw Sets

Model No.	Jaw Face	Jaw Opening (Max)		Clamping Surface	
		in	mm	in	mm
JAW22-B50	Smooth	2.4	60	1.97 x 1.97	50 x 50
JAW22-BR50	Rubber	2.4	60	1.97 x 1.97	50 x 50
JAW22-PY50	Serrated	2.4	60	1.97 x 1.97	50 x 50
JAW22-V4	V-Notch	0.16-1.18ø	4-30ø	1.97 x 1.97	50 x 50
JAW22-WV50	Wave	2.4	60	1.97 x 1.97	50 x 50
JAW22-D50	Diamond	2.4	60	1.97 x 1.97	50 x 50
JAW22-B100	Smooth	2.4	60	0.97 x 3.9	50 x 100
JAW22-BR100	Rubber	2.4	60	0.97 x 3.9	50 x 100
JAW22-PY100	Serrated	2.4	60	0.97 x 3.9	50 x 100
JAW22-WV100	Wave	2.4	60	0.97 x 3.9	50 x 100
JAW22-D100	Diamond	2.4	60	0.97 x 3.9	50 x 100

SMOOTH JAW

- Suitable for own further treatments
- Steel-blanks without coating

RUBBER-COATED JAW

- 1mm rubber coating (NBR)
- Nickel-plated

SERRATED JAW

- Pyramids 1.2 x 45°
- Hardened steel 58HRC
- Nickel-plated

V-NOTCH JAW

- For all kinds of round samples
- Tooth pitch 1.2 mm
- Hardened steel
- Nickel-plated

WAVE JAW

- For flexible materials
- Wave 5mm
- Hardened steel 58HRC
- Nickel-plated

DIAMOND-COATED JAW

- Clamping surface coated with synthetic diamonds
- D91 (170/200 mesh)
- Nickel-plated

PNEUMATIC FIXTURES

13

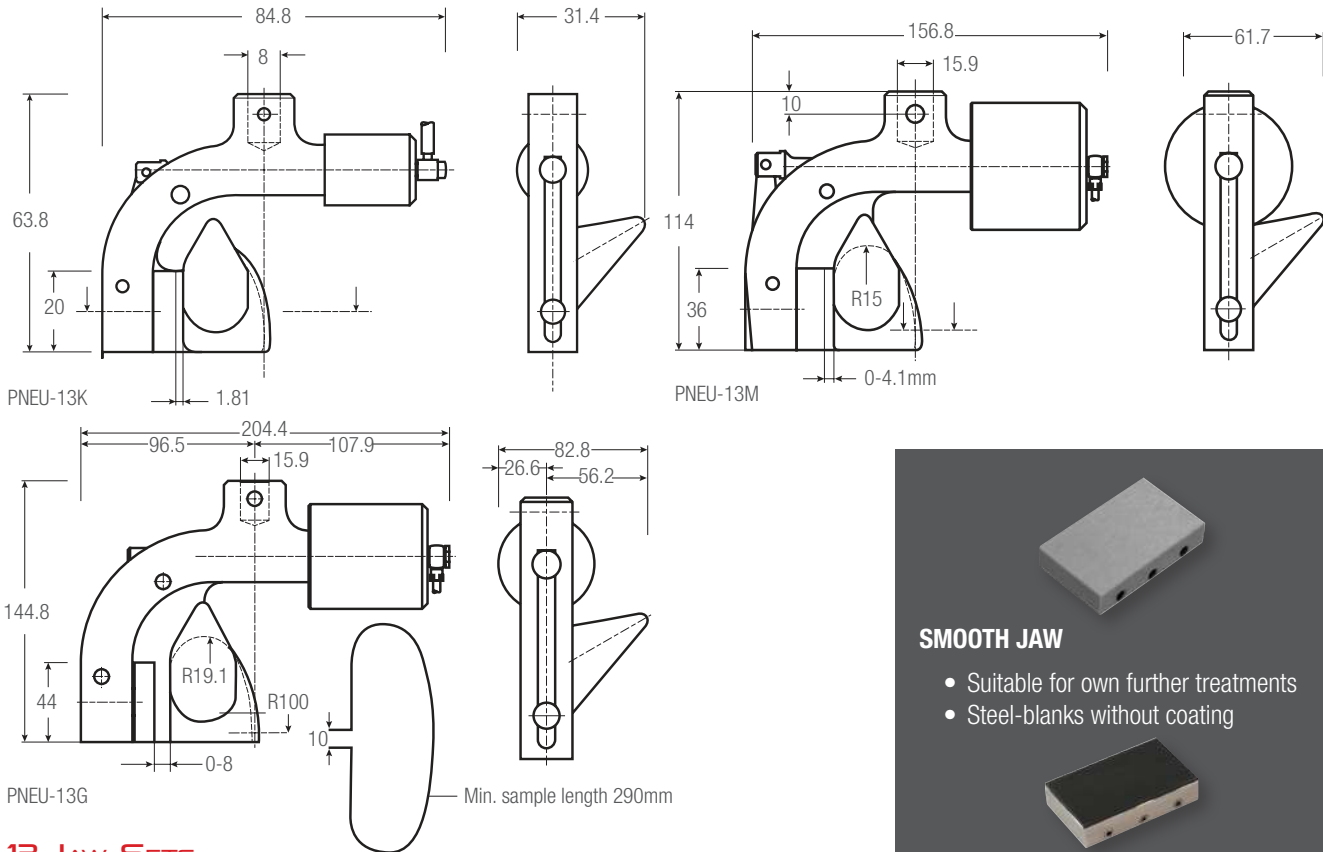
ALUMINUM, ANODIZED

- For general-purpose tensile testing applications on fibers, wire, cord, fine wire, etc.
- Guide horn with centering groove
- Order required jaw set separately
- Operating Temperatures 32° to 176°F (0° to 80°C)



Pneumatic Fixtures											
Model No.	Load Capacity			Material	Face	Jaw Dimensions (h x w) mm	Opening Width mm	Weight (each)		Supply each	Clevis Size mm
	N	KGf	LBF					lbs	kg		
PNEU-13G	5kN	500	1124	Aluminum	Smooth	15 x 44	0 - 3	2.9	1.3	2	15.9
PNEU-13G+BD	5kN	500	1124	Aluminum	Diamond	15 x 44	0 - 3	2.9	1.3	2	15.9
PNEU-13K	200	20	45	Aluminum	Smooth	6 x 20	0 - 1	0.23	0.1	2	15.9
PNEU-13K+BD	200	20	45	Aluminum	Diamond	6 x 20	0 - 1	0.23	0.1	2	15.9
PNEU-13M	2kN	200	450	Steel	Smooth	12 x 36	0 - 2	1.3	0.6	2	15.9
PNEU-13M-BD	2kN	200	450	Steel	Diamond	12 x 36	0 - 2	1.3	0.6	2	15.9

DIMENSIONS



13 JAW SETS

STEEL, HARDENED

- Supplied two (2) jaws per set
- Operating Temperatures 32° to 176°F (0° to 80°C)

Jaw Sets						
Model No.		Material	Face	Jaw Dimensions (h x w) mm	Opening Width mm	Supply each
JAW13G-B	Jaw face sets PNEUM-13G	Steel	Smooth	15 x 44	0 - 3	4
JAW13G-BR		Steel	Rubber	15 x 44	0 - 3	4
JAW13G-D		Steel	Diamond	15 x 44	0 - 3	4
JAW13K-B	Jaw face sets PNEUM-13K	Steel	Smooth	6 x 20	0 - 1	4
JAW13K-BR		Steel	Rubber	6 x 20	0 - 1	4
JAW13K-D		Steel	Diamond	6 x 20	0 - 1	4
JAW13M-B	Jaw face sets PNEUM-13M	Steel	Smooth	12 x 36	0 - 2	4
JAW13M-BR		Steel	Rubber	12 x 36	0 - 2	4
JAW13M-D		Steel	Diamond	12 x 36	0 - 2	4

SMOOTH JAW

- Suitable for own further treatments
- Steel-blanks without coating

RUBBER-COATED JAW

- 1mm rubber coating (NBR)
- Nickel-plated

SERRATED JAW

- Pyramids 1.2 x 45°
- Hardened steel 58HRC
- Nickel-plated

PNEUMATIC FIXTURES

76-5

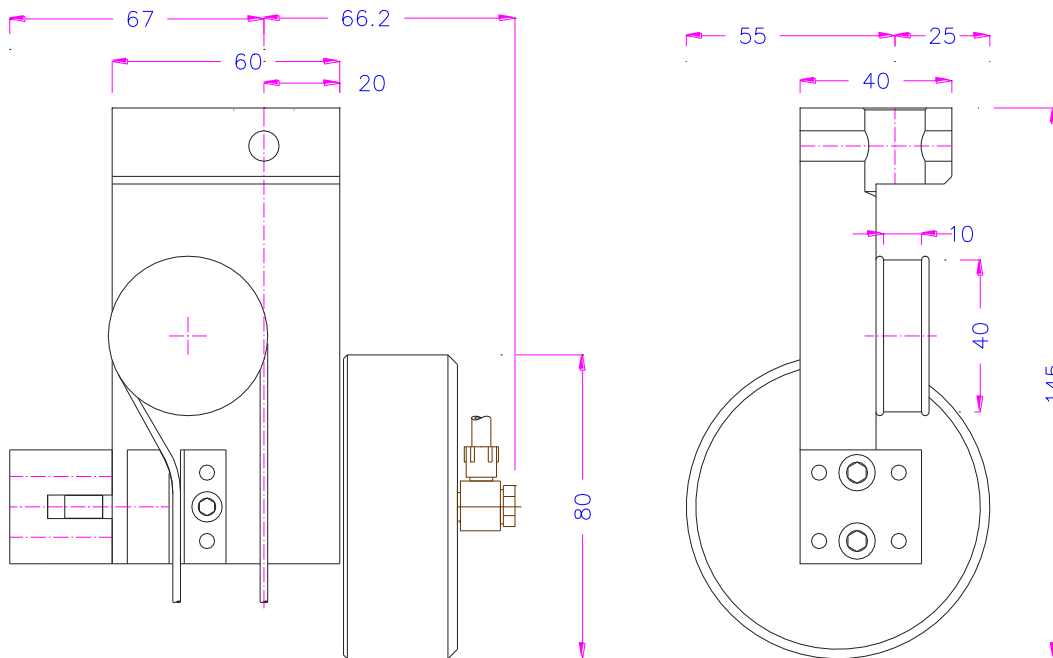
ALUMINUM, ANODIZED

- For general-purpose tensile testing applications
- Use on small diameter wire, rope, filaments, thread, etc...
- Operating Temperatures 32° to 356°F (0° to 180°C)



Pneumatic Fixtures									
Model No.	Load Capacity			Material	Jaw Face	Jaw Opening (Max) mm	Jaw Dimensions mm (h x w)	Clevis Type mm	Supply
	N	KGF	LBF						
PNEUM-76-5+K0	5kN	500	1,124	Aluminum	Serrated	0-2ø	20 x 20	15.9	2

DIMENSIONS



PNEUMATIC FIXTURES

501P

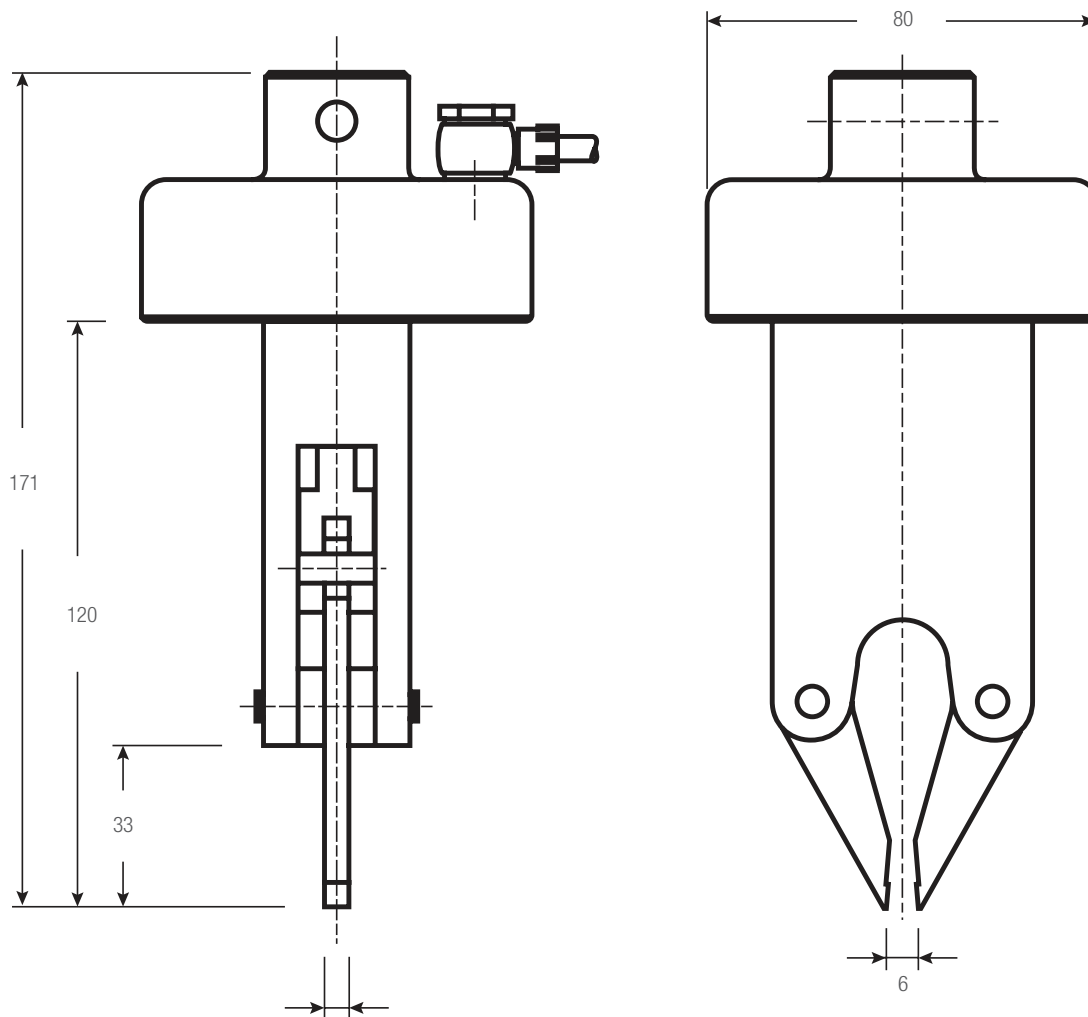
ALUMINUM, ANODIZED

- For general-purpose tensile testing applications
- Self-aligning, self-tightening
- Order required jaw set separately
- Operating Temperatures 32° to 158°F (0° to 70°C)



Pneumatic Fixtures												
Model No.	Load Capacity			Jaw Face	Jaw Opening (Max)		Clamping Surface		Weight (each)		Clevis Type	Supply
	N	KGf	LBF		in	mm	in	mm	lbs	kgs		
PNEUM-501A-1	2,000	200	450	Serrated	0.24	6	0.2 x 0.2	5 x 5	1.8	0.8	15.9	1

DIMENSIONS



PNEUMATIC FIXTURES

ACCESSORIES

Pneumatic Accessories		
Model No.	Description	Supply
PNEUM-2051	Two (2ea) pneumatic foot switches, tubes and fittings, Non locking: The jaws of the grip open by pressing, the foot pedal and close after removing, the foot from the pedal. Includes 1 pair of pedals, tubes, and fittings	1
PNEUM-2052	Two (2ea) pneumatic foot switches, tubes and fittings, Locking function: The jaws open and remain, opened after removing the foot from the pedal. The jaws close by pressing one more time. Includes 1 pair of pedals, tubes, and fittings	1
PNEUM-205PR	Pressure regulator, To adjust air pressure 1-10 bar (14.5-145 psi), Optional for PNEUM-205-1 and PNEUM-205-2	1
PNEUM-2053	Pneumatic hand switches tubes and fittings, With locking function: Handle with 2 positions. The jaws close by pulling the handle and remain closed. The jaws open by pushing the handle back. Includes 1 unit, tubes, and fittings	1
PNEUM-205F	One (1ea) extra set fittings and tubes (1 Set is already included if you order PNEUM-205-1 or PNEUM-205-2 or PNEUM-205-3)	1

