



PEEL FIXTURES

## PEEL FIXTURES

Starrett has a wide selection of test fixtures suitable for determining adhesive strength on a variety of components from adhesive tapes, thin film coatings, copper runners on electronic circuit boards and more.

### OPERATION

Peel testing fixtures come in a variety of styles that match the material under test. Some include a moving table connected to the test frame's crosshead using a cable mechanism. As the crosshead moves upwards, the cables pull the table laterally to maintain a required angle. This provides a measuring of bond strength.

Other test fixtures are application specific such as a climbing drum test fixture often used in paper and paper product adhesive testing.

### TESTING STANDARDS

The following testing standards can be met using standard Starrett peel testing fixtures:

- ASTM D1781
- DIN 53295
- DIN 53494
- ISO 10373

Additional testing standards are supported. Contact your Starrett representative for more information.

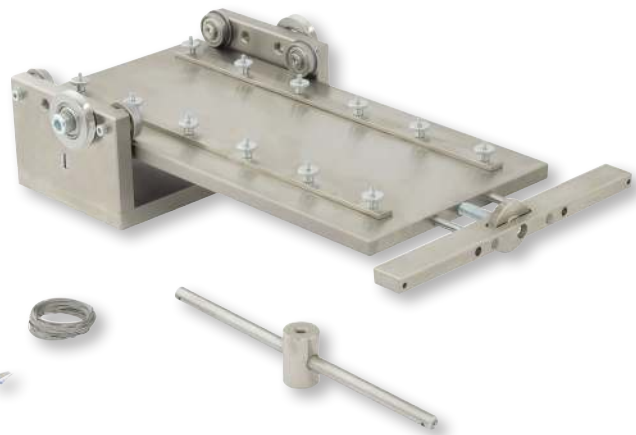
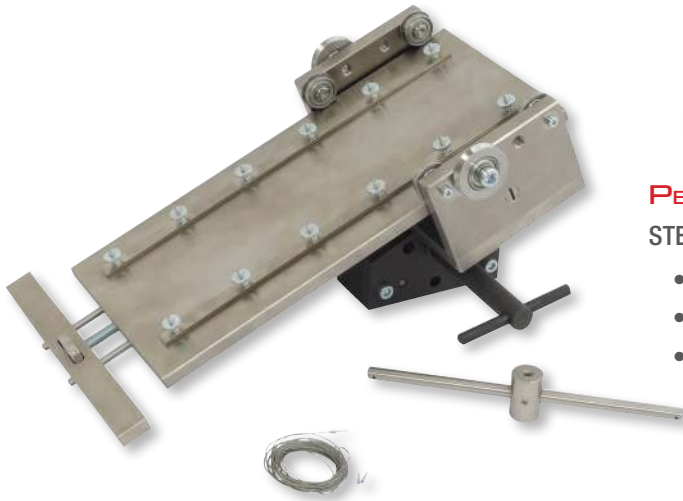


Peel Fixtures						
Model No.	Load Capacity			Adjustable Angle	Sample Width	Sample Length
	N	KGF	LBF			
PEEL-3-D53357B	4,000	400	900	No	60 mm	-
PEEL-3-D53357B-KL	4,000	400	900	No	90 mm	-
PEEL-3-ISO6133L	4,000	400	900	No	152.4 mm	-
PEEL-50S-1	5,000	500	1,100	No	50 mm	250 mm
PEEL-50MS-1	5,000	500	1,100	Yes	50 mm	250 mm
PEEL-ASTM-D1781	5,000	500	1,100	No	80 mm	-
PEEL-104-DIN53494	7,000	700	1,570	No	30 mm	-
PEEL-105-D53289	10K	1,000	2,200	No	30 mm	-
PEEL-105-D3167	10K	1,000	2,200	No	25.4 mm	-
PEEL-192-25	10K	1,000	2,200	Yes	60mm	-
PEEL-192-22-2V	10K	1,000	2,200	No	58mm	-

## PEEL FIXTURES

Ideal for adhesive testing applications or general peel testing on films, paper, foils and more. Use for 90° peel and bond strength testing methods.

The sliding table ensures a steady movement and constant peel angle so that the peel point remains in the center.



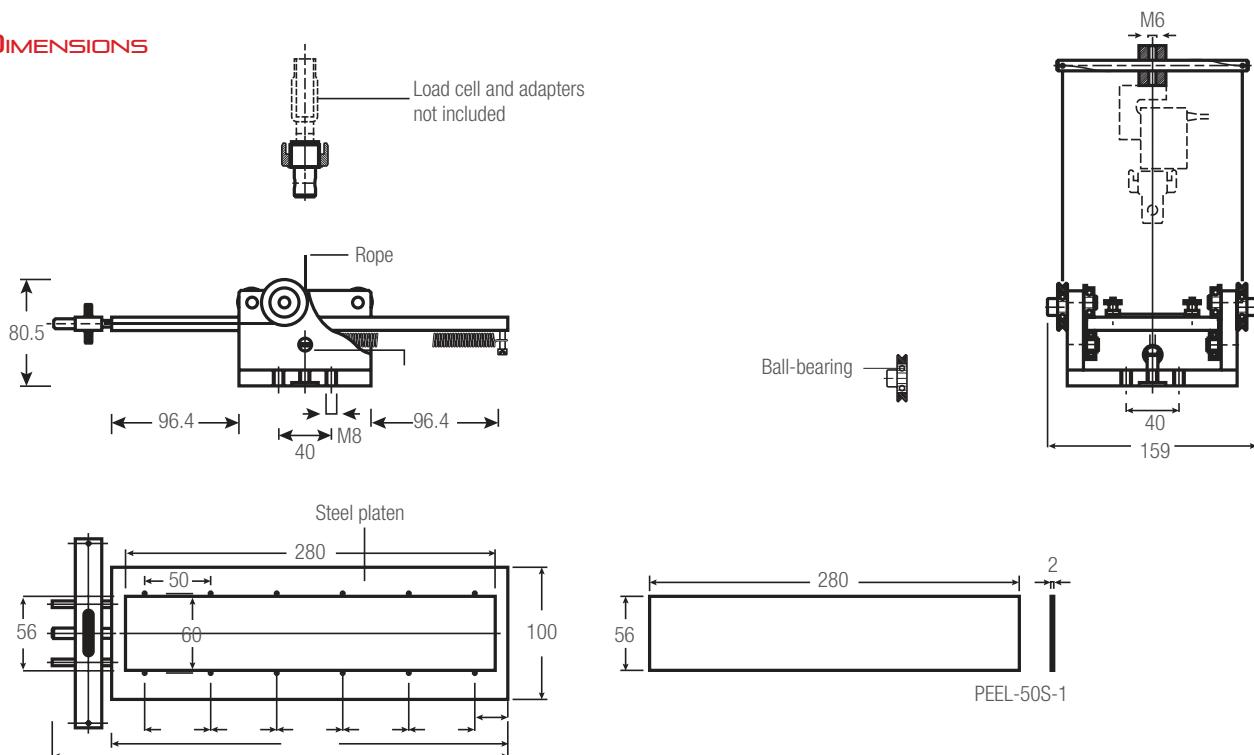
### PEEL-50 STEEL, NICKEL FINISH

- For general-purpose peel and adhesive bond testing applications
- Fixed and adjustable angle platforms
- Operating Temperatures 32° to 158°F (0° to 70°C)

Shown: PEEL-50MS-1 model with adjustable angle platform.

Peel Fixtures													
Model No.	Load Capacity			Adjustable Angle	Sample Width (Max)		Sample Length (Max)		Weight (each)		Clevis Type	Supply	
	N	KGF	LBF		in	mm	in	mm	lbs	kgs			
PEEL-50S-1	5,000	500	1,100	Fixed	1.97	50	9.84	250	12.1	5.5	15.9	1	
PEEL-50MS-1	5,000	500	1,100	0-30 deg	1.97	50	9.84	250	15.9	7.2	15.9	1	

## DIMENSIONS



## PEEL FIXTURES

The Climbing Drum fixture consists of a drum assembly, flexible loading straps mounted at the bottom of the stand, an upper self-closing clamp to grip the specimen and a drum clamp to hold the outer skin against the face of the drum.

During a test, the loading straps pull on the drum assembly, forcing it to rotate and climb along the length of the aluminum panel. This motion peels the outer skin away from the core structure. The peel force is measured indicating bond strength.

### CLIMBING DRUM

STEEL, NICKEL FINISH, ALUMINUM STRAPS

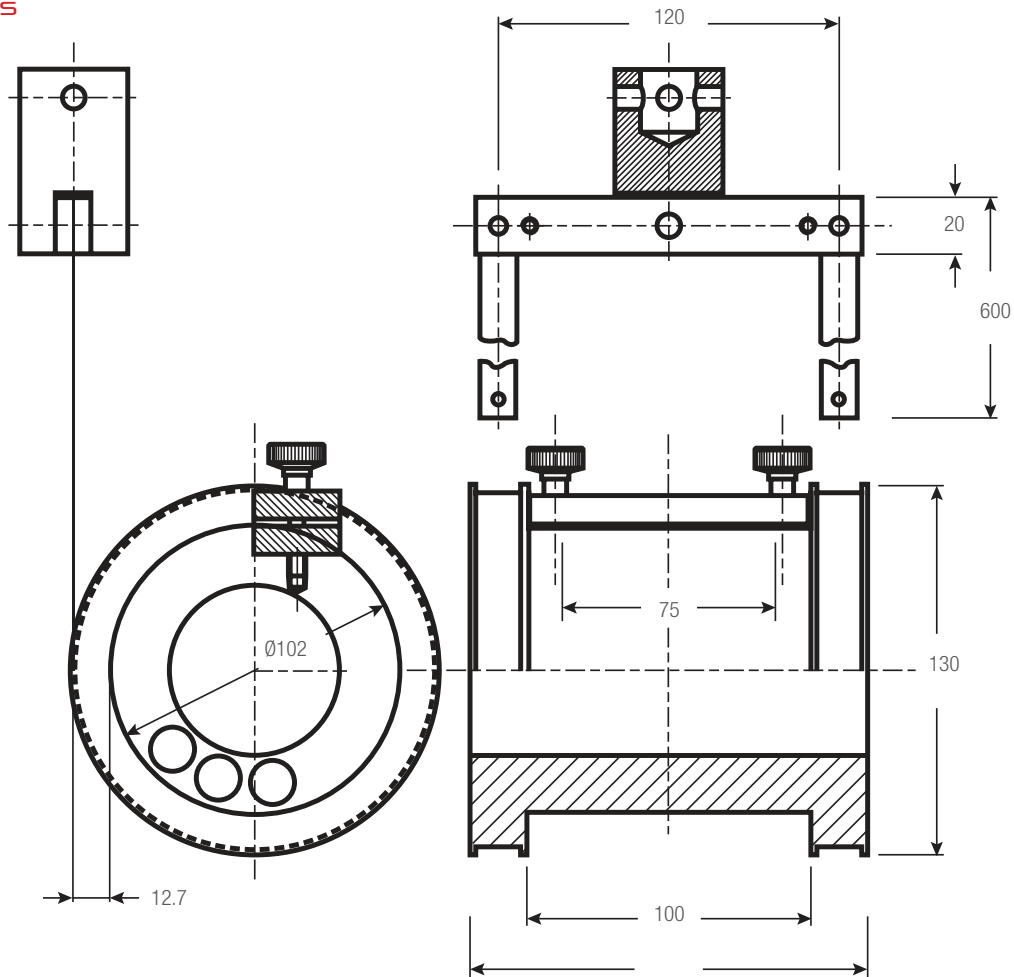
- Conforms to test methods ASTM-D1781 and DIN 53295
- Operating Temperatures 32° to 266°F (0° to 130°C)



Climbing Drum Peel Fixture

Model No.	Load Capacity			Drum Diameter		Sample Width (Max)		Weight (each)		Clevis Type mm	Supply
	N	KGf	LBF	in	mm	in	mm	lbs	kg		
PEEL-ASTM-D1781	5,000	500	1,100	4.02	102	3.15	80	6.6	3.0	15.9	1

### DIMENSIONS



# PEEL FIXTURES

104

STEEL, NICKEL FINISH

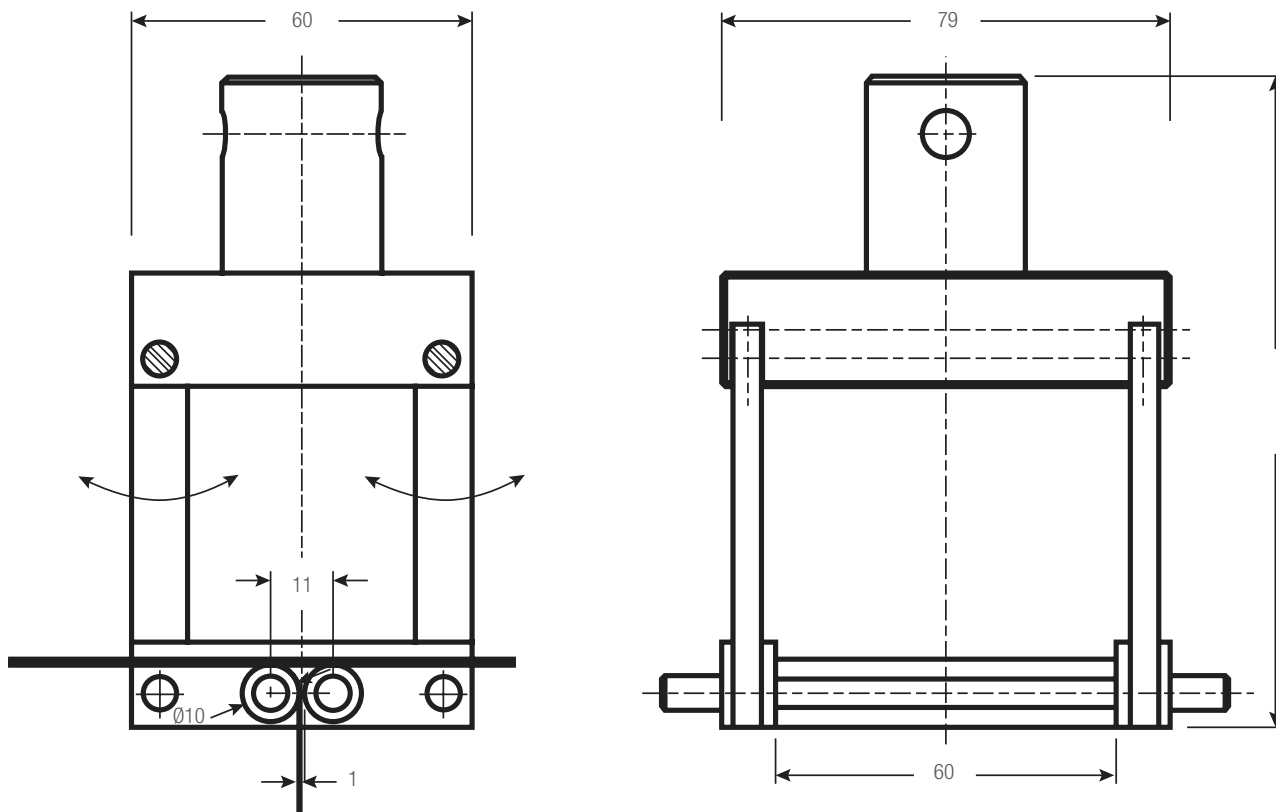
- Conforms to test methods DIN 53494, ISO 10373
- Operating Temperatures 32° to 266°F (0° to 130°C)



PEEL FIXTURES

Peel Fixture										
Model No.	Load Capacity			Sample Width (Max)		Weight (each)		Clevis Type mm	Supply	
	N	KGF	LBF	in	mm	lbs	kgs			
PEEL-104-DIN53494	7,000	700	1,570	1.2	30	2.2	1.0	15.9	1	

## DIMENSIONS



# PEEL FIXTURES

## 105

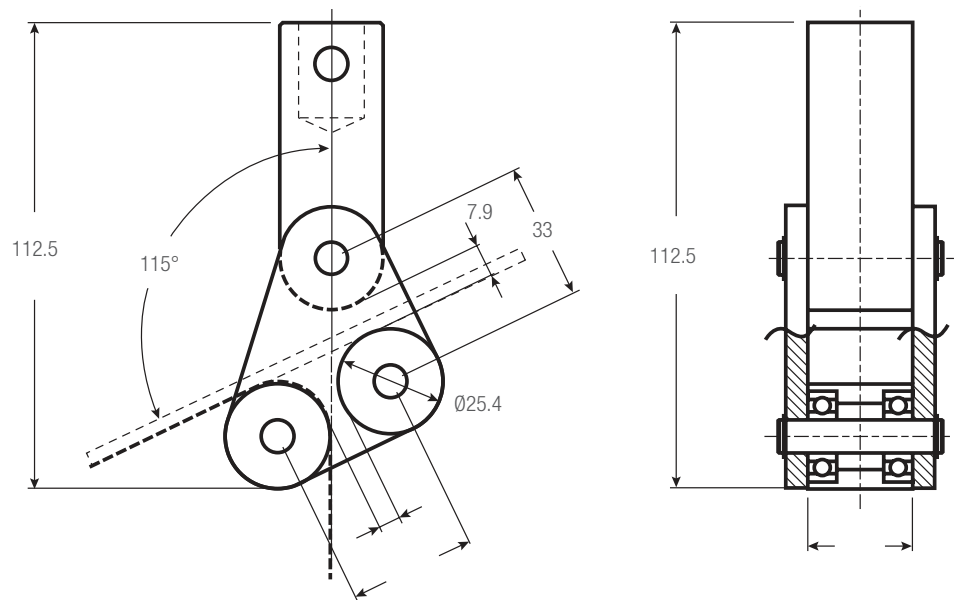
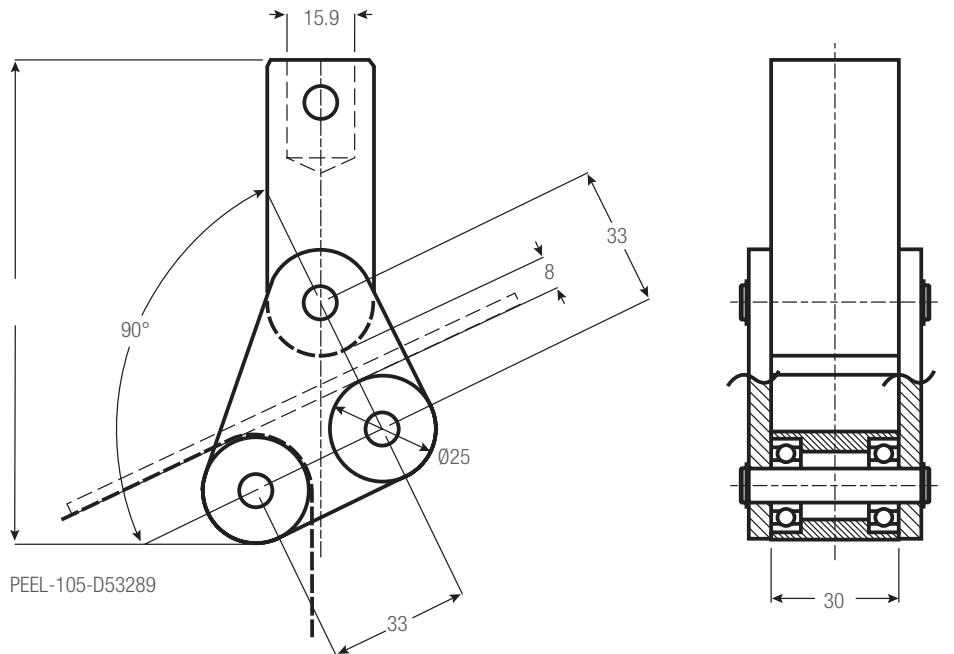
### STEEL, NICKEL FINISH

- Conforms to test methods ASTM D3167, DIN 53289, ISO 4578
- Operating Temperatures 32° to 158°F (0° to 70°C)
- Additional lower grip is required



Peel Fixture												
Model No.	Load Capacity			Roller Diameter		Sample Width (Max)		Weight (each)		Clevis Type	Supply	
	N	KGF	LBF	in	mm	in	mm	lbs	kgs			
PEEL-105-D53289	10K	1,000	2,200	0.98	25	1.2	30	1.3	0.6	15.9	1	
PEEL-105-D3167	10K	1,000	2,200	1.0	25.4	1.0	25.4	1.5	0.7	15.9	1	

### DIMENSIONS



# PEEL FIXTURES

## PEEL 3

### ALUMINUM, ANODIZED FINISH

- Used to test bond strength of tape, plastic, paper films, laminated release coatings
- 90-degree peel angle testing
- Conforms to DIN 53357B, ISO 6133
- Operating Temperatures 32° to 158°F (0° to 70°C)
- Additional lower grip is required

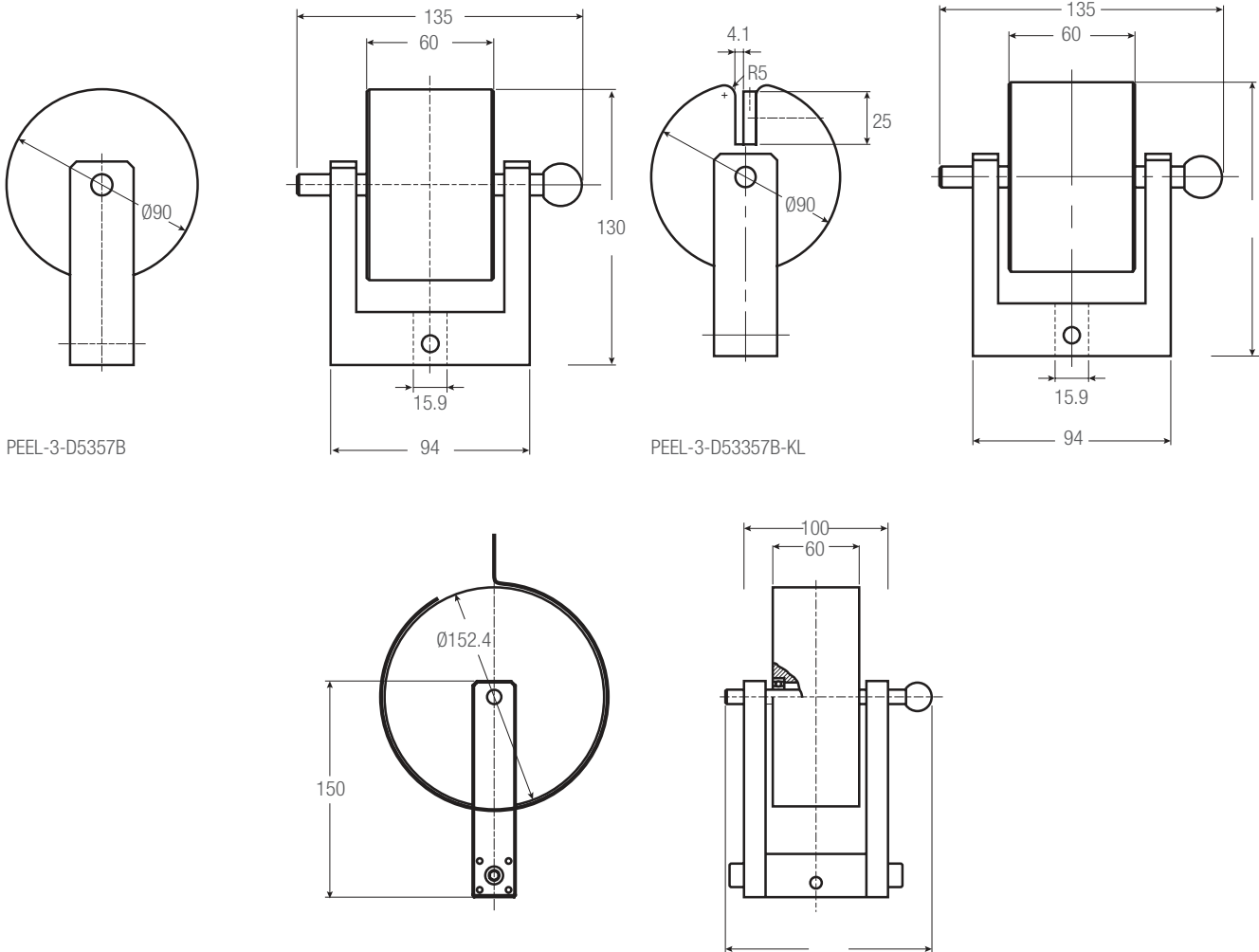


PEEL-3-D53357B-KL

PEEL-3-IS06133L

Peel Fixture Model No.	Load Capacity			Roller Diameter		Sample Width (Max)		Weight (each)		Clevis Type mm	Supply
	N	KGF	LBF	in	mm	in	mm	lbs	kgs		
PEEL-3-D53357B	4,000	400	900	3.5	90	2.4	60	4.4	2.0	15.9	1
PEEL-3-D53357B-KL	4,000	400	900	3.5	90	2.4	60	4.6	2.1	15.9	1
PEEL-3-IS06133L	4,000	400	900	6.0	152.4	2.4	60	7.3	3.3	15.9	1

## DIMENSIONS



PEEL-3-D5357B

PEEL-3-D53357B-KL

# PEEL FIXTURES

## 192

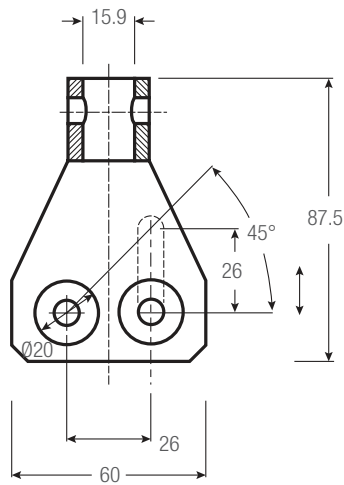
### STEEL, NICKEL FINISH

- Conforms to test methods DIN 1464
- Adjustable cylinder angle 0-45° or width to 50mm
- Operating Temperatures 32° to 158°F (0° to 70°C)
- Additional lower grip is required

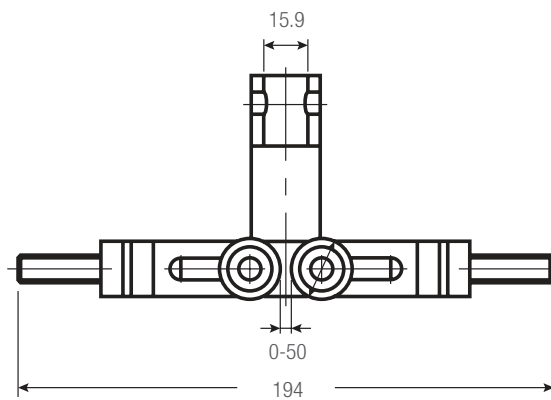
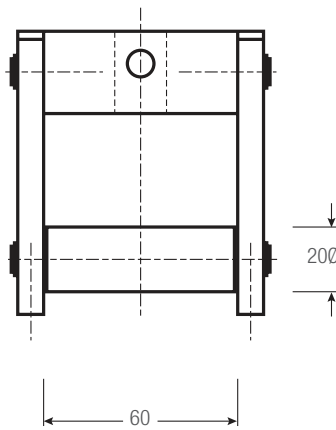


Peel Fixture													
Model No.	Load Capacity			Cylinder Type	Roller Diameter		Sample Width (Max)		Weight (each)		Clevis Type	Supply	
	N	KGF	LBF		in	mm	in	mm	lbs	kgs			
PEEL-192-25	10K	1,000	2,200	Adjusts 0-45°	0.98	25	2.4	60	2.2	1.0	15.9	1	
PEEL-192-22-2V	10K	1,000	2,200	Adjusts 0-50mm	0.87	22	2.3	58	3.6	1.65	15.9	1	

### DIMENSIONS



PEEL-192-25



PEEL-192-22v

